

**A R M Y  
AIR FORCE  
MARINE CORPS**

**\*TM 9-2805-256-24P  
TO 38G2-102-4  
SL-4-81283C**

---

**TECHNICAL MANUAL**

**UNIT, DIRECT SUPPORT AND  
GENERAL SUPPORT MAINTENANCE  
REPAIR PARTS AND SPECIAL TOOLS LIST  
FOR**

**ENGINE, GASOLINE, 1 1/2 HP  
MILITARY STANDARD MODELS**

**(MODEL 1A08-I, NSN 2805-00-601-5181)  
(MODEL 1A08-II, NSN 2805-00-714-8552)  
(MODEL 1A08-III, NSN 2805-00-068-7510)  
(MODEL 1A08-IV, NSN 2805-01-182-8467)**

**DISTRIBUTION STATEMENT A: Approved for public release; distribution is unlimited.**

**\*This manual supersedes TM 5-2805-256-24P, September 1975, including all changes**

---

**HEADQUARTERS, DEPARTMENTS OF THE ARMY AND AIR  
FORCE, AND HEADQUARTERS, U.S. MARINE CORPS  
15 JANUARY 1993**



CHANGE

HEADQUARTERS  
DEPARTMENTS OF THE ARMY, AIR FORCE  
AND HEADQUARTERS, U.S. MARINE CORPS  
WASHINGTON, D.C., 31 JULY 1996

NO. 1

UNIT, DIRECT SUPPORT, AND  
GENERAL SUPPORT MAINTENANCE  
REPAIR PARTS AND SPECIAL TOOLS LIST  
FOR

**ENGINE, GASOLINE, 1 1/2 HP,  
MILITARY STANDARD MODELS**

**(MODEL 1A08-I, NSN 2805-00-601-5181)  
(MODEL 1A08-II, NSN 2805-00-714-8552)  
(MODEL 1A08-III, NSN 2805-00-068-7510)  
(MODEL 1A08-IV, NSN 2805-01-182-8467)**

DISTRIBUTION STATEMENT A: Approved for public release; distribution is unlimited

TM 9-2805-256-24P, TO 38G2-102-4, SL-4-81283C, 15 January 1993 is changed as follows:

1. Remove and insert pages as indicated below. New or changed text material is indicated by a vertical bar in the margin. An illustration change is indicated by a miniature pointing hand.

Remove pages  
i and ii  
1-1 through 1-4  
1-7 through 1-10  
1-15

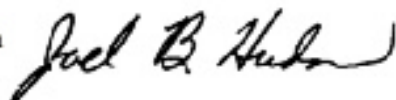
Insert pages  
i and ii  
1-1 through 1-4  
1-7 through 1-10  
1-15

2. Retain this sheet in front of manual for reference purposes.

ARMY TM 9-2805-256-24P  
AIR FORCE TO 38G2-102-4  
MARINE CORPS SL-4-81283C  
C1

By Order of the Secretaries of the Army Air Force and Navy (Including Marine Corps):

Official:



JOEL B. HUDSON  
*Administrative Assistant to the  
Secretary of the Army*  
02267

DENNIS J. REIMER  
*General, United States Army  
Chief of Staff*

RONALD R. FOGELMAN  
*General, USAF  
Chief of Staff*

Official:

HENRY VICCELLIO, JR.  
*General, USAF  
Commander, Air Force Materiel Command*

J. E. BUFFINGTON  
*Rear Admiral, CEC, US Navy  
Commander  
Navy Facilities Engineering  
Command*

D. R. BLOOMER  
*Colonel, USMC  
Director, Program Support  
Marine Corps Systems Command*

DISTRIBUTION:

To be distributed in accordance with DA Form 12-25-E, block no. 6015, requirements for TM9-2805-256-24P

TECHNICAL MANUAL

HEADQUARTERS DEPARTMENTS OF  
THE ARMY, THE AIR FORCE, AND  
HEADQUARTERS, U.S. MARINE CORPS  
WASHINGTON, D.C., 15 JANUARY 1993

NO. 1

UNIT, DIRECT SUPPORT, AND  
GENERAL SUPPORT MAINTENANCE  
REPAIR PARTS AND SPECIAL TOOLS LIST  
FOR  
ENGINE, GASOLINE 1 1/2HP  
MILITARY STANDARD MODELS

(MODEL 1A08-1, NSN 2805-00-601-5181)  
(MODEL 1A08-11, NSN 2805-00-714-8552)  
(MODEL 1A08-111, NSN 2805-00-068-7510)  
(MODEL 1A08-IV, NSN 2805-01-182-8467)  
Current as of 27 July 1996

**REPORTING ERRORS AND RECOMMENDING IMPROVEMENTS**

You can help improve this manual. If you find any mistakes, or if you know of a way to improve these procedures, please let us know. Mail your letter or DA Form 2028 (Recommended Changes to Publications and Blank Forms), or DA Form 2028-2 located in the back of this manual directly to: Commander, US Army Aviation and Troop Command, ATTN: AMSAT-I-MP, 4300 Goodfellow Blvd., St. Louis, MO 63120-1798. You may also submit your recommended changes by E-mail directly to <mpmt%/avma28@st-louis-emh7.army.mil>. A reply will be furnished directly to you. Instructions for sending an electronic 2028 may be found at the back of this manual immediately preceding the hard copy 2028.

For Air Force, submit AFTO Form 22 (Technical Order System Publication Improvement Report and Reply) in accordance with paragraph 6-5, Section VI, T.O. 00-5-1. Forward to Commander, San Antonio Air Logistics Center, ATTN: SA-ALC/TILDPA, 485 Quentin Roosevelt Road, Kelly Air Force Base, TX 78241-6421.

Marine Corps users submit NAVMC 10772 Form to Commanding General, Marine Corps Logistics Base (Code 850) Albany, GA 31704-5000.

DISTRIBUTION STATEMENT A: Approved for public release; distribution is unlimited

**TABLE OF CONTENTS**

		<u>PAGE</u>	<u>ILLUS/ FIGURE</u>
Section I	INTRODUCTION.....	1	
Section II	REPAIR PARTS LIST .....	1-1	
Group 01	Fuel Filter Assembly.....	1-1	1
Group 02	Cooling System .....	2-1	2
Group 03	High Tension Cable and Spark Plug .....	3-1	3
Group 04	Air Cleaner Assembly .....	4-1	4
Group 05	Rocker Arm Cover Assembly .....	5-1	5
Group 06	Oil Fill Tube and Gage Assembly.....	6-1	6
Group 07	Oil Pan Assembly.....	7-1	7

\*This manual supersedes TM 5-2805-256-24P, September 1975, including all Changes.

TABLE OF CONTENTS - Continued

		<u>P a g e</u>	<u>Illus/ Figure</u>
Group 08	Engine Speed Governor and Controls		
	Governor Control Components . . . . .	8-1	8
	Engine Speed Governor Assembly (with Steel Gear) . . . . .	9-1	9
	Engine Speed Governor Assembly (with Plastic Gear) . . . . .	10-1	10
Group 09	Ignition System		
	Governor Cap and Breaker Point Assembly . . . . .	11-1	11
	Breakerless Ignition System . . . . .	12-1	12
	Low Voltage Cable . . . . .	13-1	13
Group 10	Breather Line Assembly . . . . .	14-1	14
Group 11	Carburetor and Throttle Control . . . . .	15-1	15
Group 12	Fuel Line and Fuel Pump Assembly . . . . .	16-1	16
Group 13	Flywheel Assembly . . . . .	17-1	17
Group 14	Manifolds . . . . .	18-1	18
Group 15	Cylinder Head Assembly . . . . .	19-1	19
Group 16	Piston and Connecting Rod Assembly. . . . .	20-1	20
Group 17	Bearing Cap Assembly . . . . .	21-1	21
Group 18	Crankshaft Assembly . . . . .	22-1	22
Group 19	Camshaft Assembly . . . . .	23-1	23
Group 20	Crankcase Assembly . . . . .	24-1	24
Section III.	SPECIAL TOOLS LISTS (Not Applicable)		
Section IV.	CROSS-REFERENCE INDEXES . . . . .	I-1	
	National Stock Number Index. . . . .	I-1	
	Part Number Index . . . . .	I-4	
	Figure and Item Number Index. . . . .	I-10	

**UNIT, DIRECT SUPPORT AND GENERAL SUPPORT  
 MAINTENANCE REPAIR PARTS AND SPECIAL TOOLS LIST**

Section I. INTRODUCTION

1. SCOPE. This RPSTL lists and authorizes spares and repair parts; special tools; special test, measurement, and diagnostic equipment (TMDE); and other special support equipment required for performance of unit, direct support, and general support maintenance of the Engine, Gasoline 1- 1/2 Hp Military Standard Models. It authorizes the requisitioning, issue, and disposition of spares, repair parts and special tools as indicated by the source, maintenance and recoverability (SMR) codes.

2. GENERAL. In addition to this section, Introduction, this Repair Parts and Special Tools List is divided into the following sections:

a. Section II. Repair Parts List. A list of spares and repair parts authorized by this RPSTL for use in the performance of maintenance. This list also includes parts which must be removed for replacement of the authorized parts. Parts lists are composed of functional groups in ascending alphanumeric sequence, with the parts in each group listed in ascending figure and item number sequence. Bulk materials are listed in item name sequence. Repair parts kits are listed separately in their own functional group within Section II. Repair parts for repairable special tools are also listed in this section. Items are shown in the associated illustration(s)/figure(s).

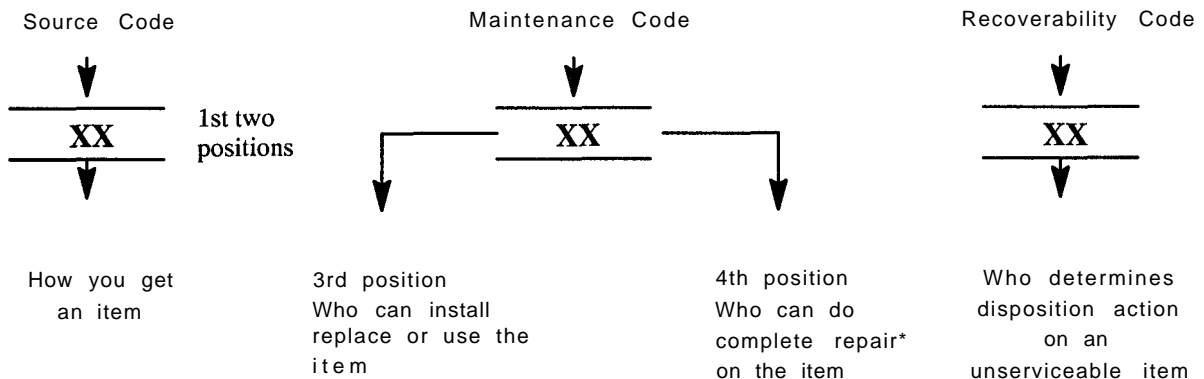
b. Section III. Special Tools List. A list of special tools, special TMDE, and other special support equipment authorized by this RPSTL (as indicated by Basis of Issue (BOI) information in DESCRIPTION AND USABLE ON CODE column) for the performance of maintenance.

c. Section IV. Cross-references Indexes. A list, in National Item Identification Number (NIIN) sequence, of all National stock numbered items appearing in the listing, followed by a list in alphanumeric sequence of all part numbers appearing in the listings. National stock numbers and part numbers are cross referenced to each illustration figure and item number appearance. The figure and item number index lists figure and item number in alphanumeric sequence and cross references NSN, CAGEC and part number.

3. EXPLANATION OF COLUMNS (SECTIONS II AND III).

a. ITEM NO. (Column (1)). Indicates the number used to identify items called out in the illustration.

b. SMR Code (Column (2)). The Source, Maintenance, and Recoverability (SMR) code is a 5-position code containing supply/requisitioning information, maintenance category authorization criteria, and disposition instruction, as shown in the following breakout:



\*Complete Repair: Maintenance capacity, capability, and authority to perform all corrective maintenance tasks of the "Repair" function in a use/user environment in order to restore serviceability to a failed item.

(1) Source Code. The source code tells you how to get an item needed for maintenance, repair, or overhaul of an end item/equipment. Explanations of source codes follows:

Code	Explanation
PA PB PC**	Stocked items; use the applicable NSN to requested/requisition items with these source codes. They are authorized to the category indicated by the code entered in the 3rd position of the SMR code.  NOTE: Items coded PC are subject to deterioration.
PD	
PE	
PF	
PG	
KD KF KB	Items with these codes are not to be requested/requisitioned individually. They are part of a kit which is authorized to the maintenance category indicated in the 3rd position of the SMR code. The complete kit must be requisitioned and applied.
MO - (Made at org/AVUM Level)	Items with these codes are not to be requested/requisitioned individually. They must be made from bulk material which is identified by the part number in the DESCRIPTION and USABLE ON CODE (UOC) column and listed in the Bulk Material group of the repair parts list in this RPSTL. If the item is authorized to you by the 3rd position code of the SMR
MP - (Made at DS/AVUM Level)	
MH - (Made at GS Level)	
ML - (Made at Specialized	
Repair Activity (SRA))	code, but the source code indicates it is made at a higher level, order the item from the higher level of maintenance.
MD - (Made at Depot)	
AO - (Assembled by org/AVUM Level)	Items with these codes are not to be requested/requisitioned individually. The parts that make up the assembled item must be requisitioned or fabricated and assembled at the level of maintenance indicated by the source code. If the 3rd position code of the SMR code authorizes you to replace the item, but the source code indicates the items are assembled at a higher level, order the item from the higher level of maintenance.
AF - (Assembled by DS/AVIM Level)	
AH - (Assembled by GS Category)	
AL - (Assembled by SRA)	
AD - (Assembled by Depot)	
XA -	Do not requisition "XA"-coded item. Order its next higher assembly. (Also, refer to the NOTE below.)
XB -	If an "XB" item is not available from salvage, order it using the CAGEC and part number given.
XC -	Installation drawing, diagram, instruction sheet, field service drawing, that is identified by Reciprocating Compressor manufacturer's part number.
XD -	Item is not stocked. Order an "XD"-coded item through normal supply channels using the CAGEC and part number given if no NSN is available.



Cannibalization or controlled exchange, when authorized, may be used as a source of supply for items with the above source codes, except for those source coded "XA" or those aircraft support items restricted by requirements of AR 750-1.

(2) Maintenance Code. Maintenance codes tells you the level(s) of maintenance authorized to USE and REPAIR support items. The maintenance codes are entered in the third and fourth positions of the SMR code as follows:

(a) The maintenance code entered in the third position tells you the lowest maintenance level authorized to remove, replace, and use an item. The maintenance code entered in the third position will indicate authorization to one of the following levels of maintenance.

<b>Code</b>	<b>Application/Explanation</b>
C	Crew or operator maintenance done with unit or aviation unit maintenance.
O	Unit or aviation unit category can remove, replace, and use the item.
F	Direct support or aviation intermediate level can remove, replace, and use the item.
H	General support level can remove, replace, and use the item.
L	Specialized repair activity can remove, replace, and use the item.
D	Depot level can remove, replace, and use the item.

(b) The maintenance code entered in the fourth position tells whether or not the item is to be repaired and identifies the lowest maintenance level with the capability to do complete repair (i.e., perform all authorized repair functions.) NOTE: Some limited repair may be done on the item at a lower level of maintenance, if authorized by the Maintenance Allocation Chart (MAC) and SMR codes. This position will contain one of the following maintenance codes.

<b>Code</b>	<b>Application/Explanation</b>
O	Unit or (aviation unit) is the lowest level that can do complete repair of the item.
F	Direct support or aviation intermediate is the lowest level that can do complete repair of the item.
H	General Support is the lowest level that can do complete repair of the item.
L	Specialized repair activity is the lowest level that can do complete repair of the item.
D	Depot is the lowest level that can do complete repair of the item.
Z	Nonreparable. No repair is authorized.
B	No repair is authorized. (No parts or special tools are authorized for the maintenance of a "B"coded Item). However, the item may be reconditioned by adjusting, lubricating, etc., at the user level.

(3) Recoverability Code. Recoverability codes are assigned to items to indicate the disposition action on unserviceable items. The recoverability code is entered in the fifth position of the SMR Code as follows:

**Recoverability**

**Codes**

**Application/Explanation**

- Z - Nonreparable item. When unserviceable, condemn and dispose of the item at the level of maintenance shown in 3d position of SMR Code.
- O - Reparable item. When not economically reparable, condemn and dispose of the item unit or aviation unit level
- F - Reparable item. When uneconomically reparable, condemn and dispose of the item at the direct support or aviation intermediate level
- H - Reparable item. When uneconomically reparable, condemn and dispose of the item at the general support level.
- D - Reparable item. When beyond lower level repair capability, return to depot. Condemnation and disposal of item not authorized below depot level.
- L - Reparable item. Condemnation and disposal not authorized below specialized repair activity (SRA).
- A - Item requires special handling or condemnation procedures because of specific reasons (e.g., precious metal content, high dollar value, critical material, or hazardous material). Refer to appropriate manuals/directives for specific instructions.

c. CAGEC (Column (3)). The Commercial and Government Entity Code (CAGEC) is a 5-digit numeric code which is used to identify the manufacturer, distributor, or Government agency, etc., that supplies the item.

d. PART NUMBER (Column (4)). Indicates the primary number used by the manufacturer, (individual, company, firm, corporation, or Government activity), which controls the design and characteristics of the item by means of its engineering drawings, specifications standards, and inspection requirements to identify an item or range of items.

When you use an NSN to requisition an item, the item you receive may have a different part number from the part ordered.

e. DESCRIPTION AND USABLE ON CODE (UOC) (Column (5)). This column includes the following information:

(1) The Federal item name and, when required, a minimum description to identify the item.

(2) The physical security classification of the item is indicated by the parenthetical entry, e.g., PhySec C1 - Confidential, PhySec C1 (S) - Secret, PhySec C1 (T) - Top Secret.

(3) Items that are included in kits and sets are listed below the name of the kit or set.

(4) Spare/repair parts that make up an assembled item are listed immediately following the assembled item line entry.

(5) Part numbers for bulk materials are referenced in this column in the line item entry for the item to be manufactured/fabricated.

(6) When the item is not used with all serial numbers of the same model, the effective serial numbers are shown on the last line(s) of the description (before UOC).

(7) The usable on code, when applicable (see paragraph 5, Special Information).

(8) In the Special Tools List section, the basis of issue (BOI) appears as the last line(s) in the entry for each special tool, special TMDE, and other special support equipment. When density of equipments supported exceeds density spread indicated in the basis of issue, the total authorization is increased proportionately.

(9) The statement "END OF FIGURE" appears just below the last item description in Column 5 for a given figure in both Section II and Section III.

(10) The indenture, shown as dots appearing before the repair part, indicates that the item is a repair part of the next higher assembly.

f. QTY (Column (6)). The QTY (quantity per figure column) indicates the quantity of the item used in the breakout shown on the illustration figure, which is prepared for a functional group, subfunctional group, or an assembly. A "V" appearing in this column in lieu of a quantity indicates that the quantity is variable and may vary from application to application.

4. EXPLANATION OF COLUMNS (SECTION IV).

a. NATIONAL STOCK NUMBER (NSN) INDEX.

(1) STOCK NUMBER column. This column lists the NSN by National item identification number (NIIN) sequence. The NIIN consists of the last nine digits of the NSN, i.e.

NSN  
5305-01-574-1467  
NIIN

When using this column to locate an item, ignore the first 4 digits of the NSN. However, the complete NSN should be used when ordering items by stock number.

(2) FIG. column. This column lists the number of the figure where the item is identified/located. The figures are in numerical order in Section II and Section III.

(3) ITEM column. The item number identifies the item associated with the figure listed in the adjacent FIG. column. This item is also identified by the NSN listed on the same line.

b. PART NUMBER INDEX. Part numbers in this index are listed by part number in ascending alphanumeric sequence (i.e., vertical arrangement of letter and number combination which places the first letter or digit of each group in order A through Z, followed by the numbers 0 through 9 and each following letter or digit in like order).

(1) CAGEC column. The Commercial and Government Entity Code (CAGEC) is a 5-digit numeric code used to identify the manufacturer, distributor, or Government agency, etc., that supplies the item.

(2) PART NUMBER column. Indicates the primary number used by the manufacturer (individual, firm, corporation, or Government activity), which controls the design and characteristics of the item by means of its engineering drawings, specifications standards, and inspection requirements to identify an item or range of items.

(3) STOCK NUMBER column. This column lists the NSN for the associated part number and manufacturer identified in the PART NUMBER and CAGEC columns to the left.

(4) FIG. column. This column lists the number of the figure where the item is identified/located in Sections II and III.

(5) ITEM column. The item number is that number assigned to the item as it appears in the figure referenced in adjacent figure number column.

c. FIGURE AND ITEM NUMBER INDEX.

(1) FIG. column. This column lists the number of the figure where the item is identified/located in Section II and III.

(2) ITEM column. The item number is that number assigned to the item as it appears in the figure referenced in the adjacent figure number column.

(3) STOCK NUMBER column. This column lists the NSN for the item.

(4) CAGEC column. The Commercial and Government Entity Code (CAGEC) is a 5-digit numeric code used to identify the manufacturer, distributor, or Government agency, etc., that supplies the item.

(5) PART NUMBER column. Indicates the primary number used by the manufacturer (individual, firm, corporation, or Government activity), which controls the design and characteristics of the item by means of its engineering drawings, specifications standards, and inspection requirements to identify an item or range of items.

5. SPECIAL INFORMATION.

a. USABLE ON CODE. The usable on code appears in the lower corner of the Description column heading. Usable on codes are shown as "UOC:..." in the Description Column justified left) on the last line applicable item description/nomenclature. Uncoded items are applicable to all models.

<u>Code</u>	<u>Used On</u>
A	Model 1 A08-I
B	Model 1 A08-II
C	Model 1 A08-III
D	Model 1 A08-IV

b. FABRICATION INSTRUCTIONS. Bulk materials required to manufacture items are listed in the Bulk Material Functional Group of this RPSTL. Part numbers for bulk materials are also referenced in the description column of the line entry for the item to be manufactured/fabricated. Detailed fabrication instructions for the items source codes to be manufactured or fabricated are found in TM 9-2805-256-14.

c. ASSEMBLY INSTRUCTIONS. Detailed assembly instructions for items source coded to be assembled from component spare/repair parts are found in TM 9-2805-256-14. Items that makeup the assembly are listed immediately following the assembly item entry or reference is made to an applicable figure.

d. KITS. Line item entrees for repair parts kits appear in a group in Section II (see table of contents)

e. INDEX NUMBERS. Items which have the work BULK in the figure column will have an index number shown in the item number column. This index number is a cross-reference between the National Stock Number/Part Number Index and the bulk material list in Section II.

f. ASSOCIATED PUBLICATIONS. The publications listed below pertains to the Engine, Gasoline, 1- 1/2 Hp MIL-STD Models and its components.

<u>Publication</u>	<u>Short Title</u>
TM 9-2805-256-14	Operator, Unit, Direct Support and General Support Maintenance Manual
LO 9-2805-256-12	Lubrication Order

6. HOW TO LOCATE REPAIR PARTS.

a. When National Stock Number or Part Number is NOT Known.

(1) First. Using the table of contents, determine the assembly group or subassembly group to which the item belongs. This is necessary since figures are prepared for assembly groups and subassembly groups, and listings are divided into the same groups.

(2) Second. Find the figure covering the assembly group or subassembly group to which the item belongs.

(3) Third. Identify the item on the figure and note the item number.

(4) Fourth. Refer to the Repair Parts List for the figure to find the part number for the item number noted on the figure.

(5) Fifth. Refer to the Part Number Index to find the NSN, if assigned.

b. When National Stock Number or Part Number is Known.

(1) First. Using the Index of National Stock Numbers and Part Numbers, find the pertinent National Stock Number or Part Number. The NSN index is in National Item Identification Number (NIIN) sequence (see c-4a.(1)). The part numbers in the Part Number index are listed in ascending alphanumeric sequence (see paragraph c-4. b). Both indexes cross-reference you to the illustration figure and item number of the item you are looking for.

(2) Second. After finding the figure and item number, verify that the item is the one you are looking for, then locate the item number in the repair parts list for the figure.

7. ABBREVIATIONS. Abbreviations used in this manual are listed in MIL-STD-12.

SECTION II

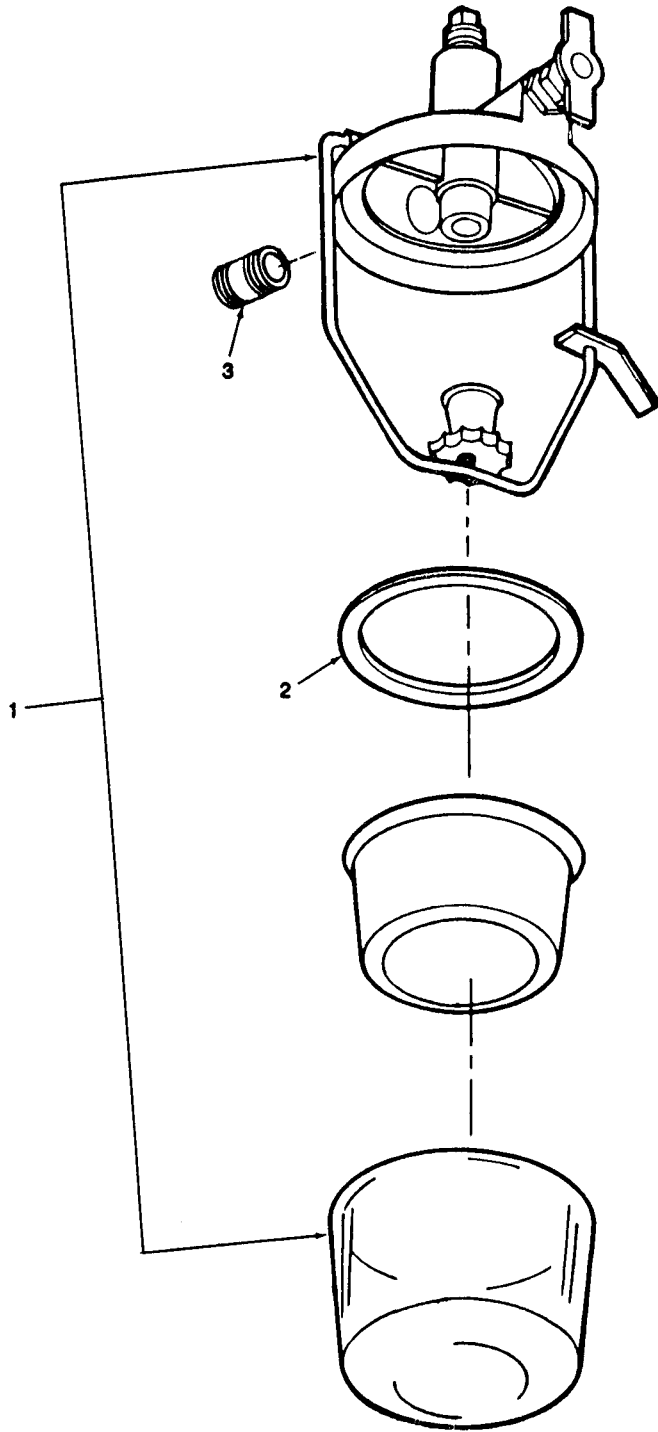


Figure 1. Fuel Filter Assembly

TM9-2805-256-24P  
 TO 38G2-102-4  
 SL-4-81283C

SECTION II

(1)	(2)		(3)	(4)	(5)	(6)	(7)
ITEM NO.	SMR CODE		c.	d.	PART CAGEC NUMBER	DESCRIPTION AND USABLE ON CODE	USMC QTY/ EQUIP
	ARMY	AIR FORCE					
GROUP 01 FUEL FILTER ASSEMBLY							
FIG. 1 FUEL FILTER ASSEMBLY							
1	PAOZZ	PAOZZ		PAOZZ	96906 MS51086-1	FILTER ASSEMBLY,FUEL	1
2	PAOZZ	PAOZZ		PAOZZ	96906 MS51091-4	.GASKET, FUEL FILTER BOWL: 2 IN. OD	1
3	PAOZZ	PAOZZ		PAOZZ	44940 505-0104	.NIPPLE, FUEL FILTER	1
END OF FIGURE							

SECTION II

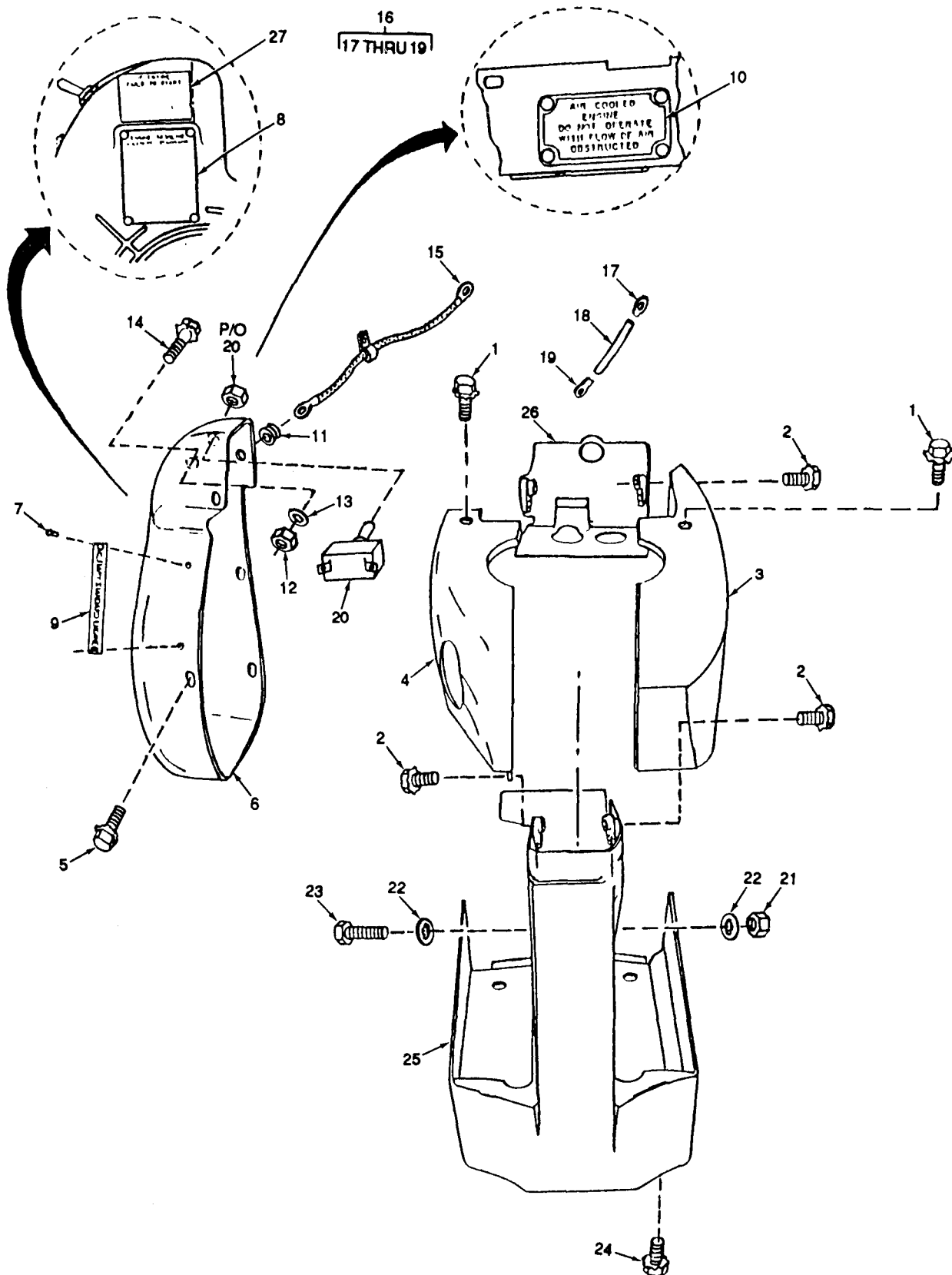


Figure 2. Cooling System Components



(1)	(2)		(3)	(4)	(5)	(6)	(7)	
ITEM NO.	SMR CODE		c.	d.	PART NUMBER	DESCRIPTION AND USABLE ON CODE	USMC QTY/ EQUIP	
	a.	b.						
ARMY	AIR FORCE	NAVY	USMC	CAGEC				
GROUP 02 COOLING SYSTEM								
FIG. 2 COOLING SYSTEM COMPONENTS								
1	PAOZZ	PAOZZ		PAOZZ	97403	13218E0504-67	SCREW AND LOCKWASHER ASSEMBLY: COVER MTG, CYLINDER HEAD PTO SIDE AND FLYWHEEL SIDE, 1/4-20- THD SIZE, 3/8 IN. LG	2
2	PAOZZ	PAOZZ		PAOZZ	97403	13218E0505-56	SCREW AND LOCKWASHER ASSEMBLY: COVER MTG, CYLINDER HEAD PTO SIDE AND FLYWHEEL SIDE, NO. 10-24 THD SIZE, 9/16 IN. LG	3
3	PAOZZ	PAOZZ		PAOZZ	97403	9786E56	COVER, CYLINDER HEAD: PTO SIDE	1
4	PAOZZ	PAOZZ		PAOZZ	97403	9786E55	COVER, CYLINDER HEAD: FLYWHEEL SIDE	1
5	PAOZZ	PAOZZ		PAOZZ	97403	13218E0504-53	SCREW AND LOCKWASHER ASSEMBLY: FLYWHEEL COVER MTG, NO. 10-24 THD SIZE, 3/8 IN. LG	7
6	PAOZZ	PAOZZ		PAOZZ	97403	9786E53	COVER ASSEMBLY, FLYWHEEL	1
7	XDOZZ	XDOZZ		XDOZZ	96906	MS16535-152	.RIVET, TUBULAR PLATES: 1/8 IN. DIA, 1/8 IN. LG	10
8	MDOZZ	MDOZZ		MDOZZ	97403	9786E53-1	.NAMEPLATE: 1 1/2 HP ENGINE	1
9	MDOZZ	MDOZZ		MDOZZ	97403	13215E4156	.PLATE, INSTRUCTION	1
10	MDOZZ	MDOZZ		MDOZZ	97403	13215E4157	.PLATE, IDENTIFICATION	1
11	PAOZZ	PAOZZ		PAOZZ	97403	9787E40-2	GROMMET, PANEL HOLE (PART OF KIT,P/N 13214E8217) UOC: A,B,C	1
11	PAOZZ	PAOZZ		PAOZZ	97403	13226E1594	GROMMET, PANEL HOLE (PART OF KIT, P/N 13226E6175) UOC: D	1
12	PAOZZ	PAOZZ		PAOZZ	97403	13218E0320-249	NUT, MACHINE: NO. 10-24 THD SIZE	1
13	PAOZZ	PAOZZ		PAOZZ	96906	MS35333-73	WASHER, LOCK: INTERNAL TOOTH, NO. 10	1
14	PAOZZ	PAOZZ		PAOZZ	97403	13218E0504-56	SCREW AND LOCKWASHER ASSEMBLY: GROUP WIRE TO TOGGLE MOUNT, NO. 10-24 THD SIZE, 9/16 IN. LG	1
15	PAOZZ	PAOZZ		PAOZZ	97403	9786E47A	CABLE ASSEMBLY: LOW TENSION UOC: A,B,C	1
16	AOOZZ	AOOZZ		AOOZZ	97403	9786E66-1	WIRE, SWITCH CONNECTOR UOC: D	1
17	PAOZZ	PAOZZ		PAOZZ	96906	MS25036-101	TERMINAL, LUG	1
18	PAOZZ	PAOZZ		PAOZZ	81349	M13486-1-2	WIRE, ELECTRICAL	V

(1)	(2)		(3)	(4)	(5)	(6)	(7)		
ITEM NO.	SMR CODE		NAVY	USMC	CAGEC	PART NUMBER	DESCRIPTION AND USABLE ON CODE	QTY	USMC QTY/ EQUIP
	a. ARMY	b. AIR FORCE							
19	PAOZZ	PAOZZ		PAOZZ	96906	MS25036-149	TERMINAL, LUG	1	
20	PAOZZ	PAOZZ		PAOZZ	96906	MS35058-22	SWITCH, ENGINE CUTOFF	1	
21	PAOZZ	PAOZZ		PAOZZ	97403	13218E0320-51	NUT,MACHINE: AIR DUCT TO CRANKCASE, 1/4-28 THD SIZE	1	
22	PAOZZ	PAOZZ		PAOZZ	96906	MS35335-33	WASHER, LOCK, EXTERNAL TOOTH: UPPER AIR DUCT TO CRANKCASE, 1/4 IN.	2	
23	PAOZZ	PAOZZ		PAOZZ	97403	13218E0526-286	SCREW, MACHINE: AIR DUCT TO CRANKCASE, 1/4-28 THD SIZE, 2 IN. LG	1	
24	PAOZZ	PAOZZ		PAOZZ	97403	13218E0549-34	SCREW AND LOCKWASHER ASSEMBLY: OIL PAN COVER MTG, 1/4-14 THD SIZE, 1/2 IN. LG	4	
25	PAOZZ	PAOZZ		PAOZZ	97403	9786E57	AIR DUCT, LOWER	1	
26	PAOZZ	PAOZZ		PAOZZ	97403	9786E61-1	COVER, CYLINDER HEAD: REAR	1	
27	MDOZZ	MDOZZ		MDOZZ	97403	13226E2228	PLATE, INFORMATION	1	

END OF FIGURE

SECTION II

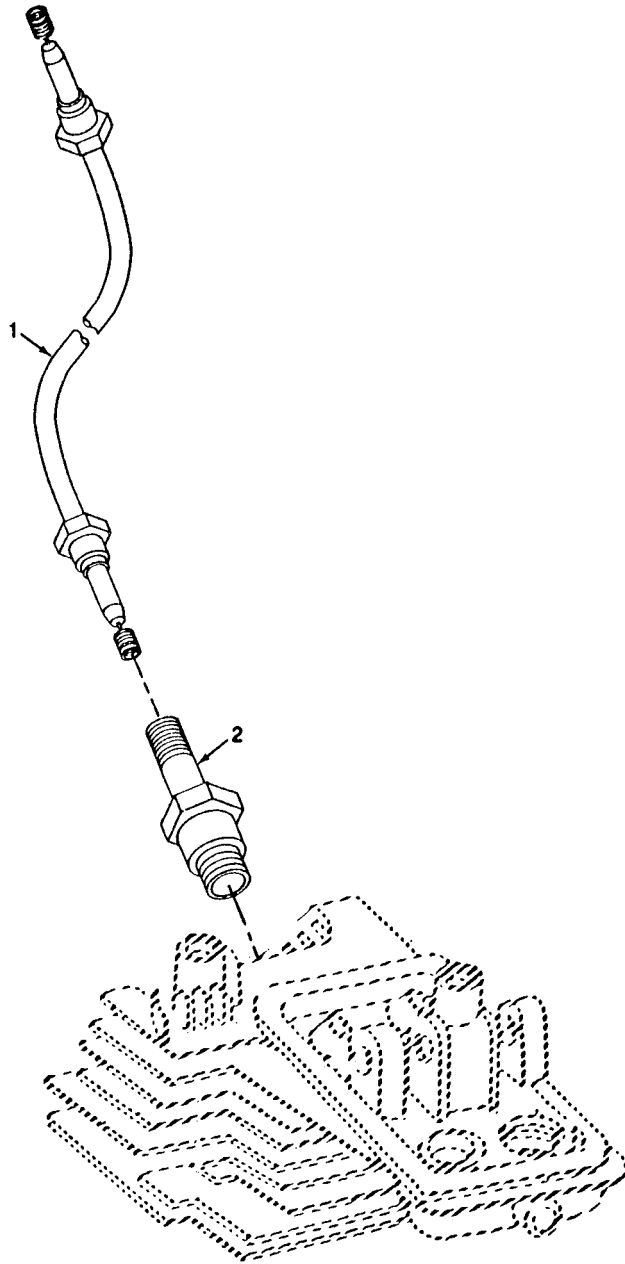


Figure 3. High Tension Cable Assembly

(1)	(2)		(3)	(4)	(5)	(6)	(7)	
ITEM NO.	SMR CODE		NAVY	USMC	CAGEC	PART NUMBER	DESCRIPTION AND USABLE ON CODE	USMC QTY/ EQUIP
	a. ARMY	b. AIR FORCE						
							GROUP 03 HIGH TENSION CABLE AND SPARK PLUG	
							FIG. 3 HIGH TENSION CABLE AND SPARK PLUG	
1	PAOZZ	PAOZZ		PAOZZ	97403	13227E9891-3	CABLE ASSEMBLY, HIGH TENSION UOC: A,B,C	1
1	PAOZZ	PAOZZ		PAOZZ	97403	13227E9891-4	CABLE ASSEMBLY, HIGH TENSION UOC: D	1
2	PAOZZ	PAOZZ		PAOZZ	96906	MS51009-1	SPARK PLUG	1
							END OF FIGURE	

SECTION II

9  
10 AND 11

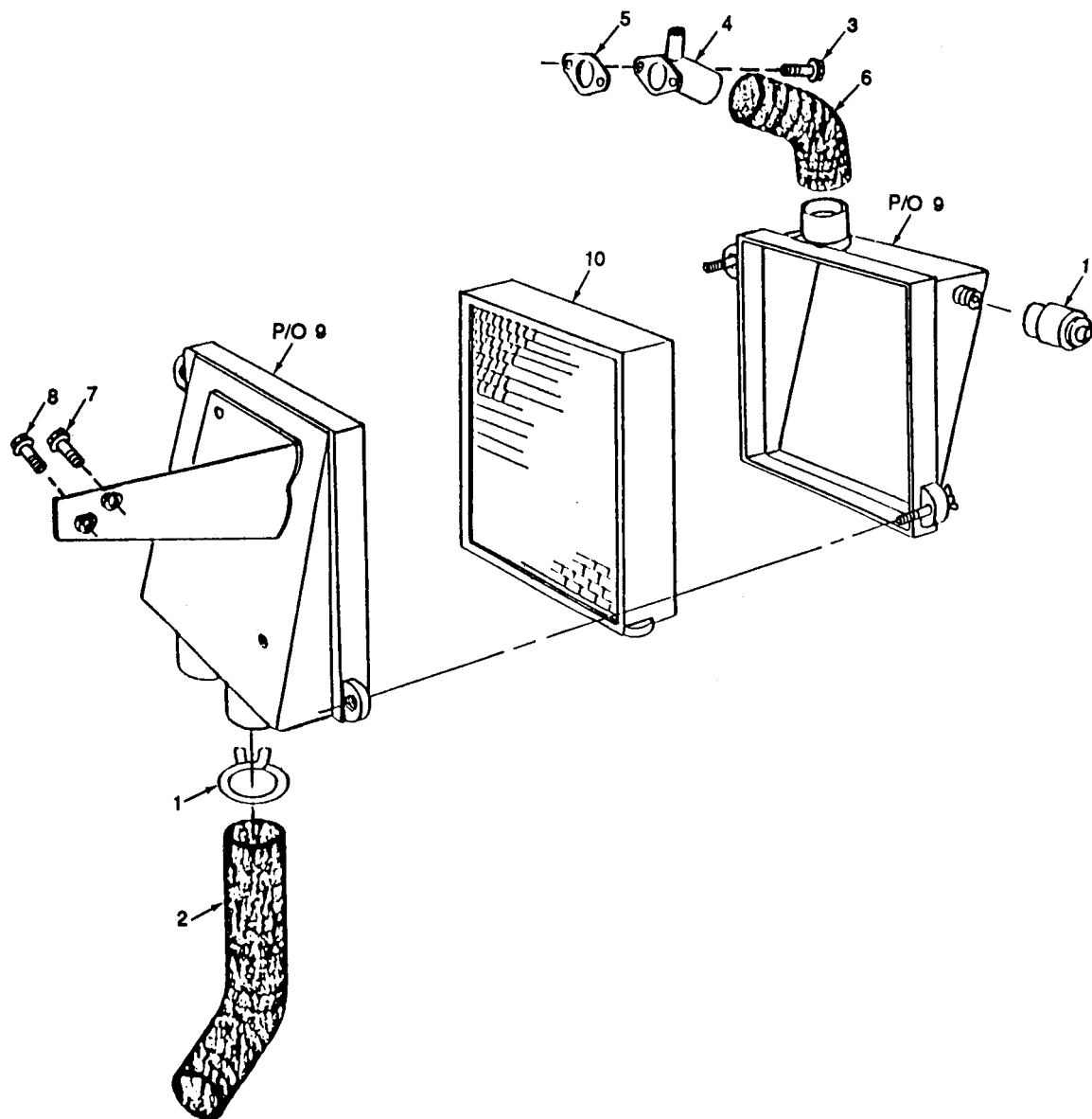


Figure 4. Air Cleaner and Components

TM9-2805-256-24P  
 TO 38G2-102-4  
 SL-4-81283C  
 SECTION II

(1)	(2)		(3)	(4)	(5)	(6)	(7)	
ITEM NO.	SMR CODE		c.	d.	PART NUMBER	DESCRIPTION AND USABLE ON CODE	USMC QTY/ EQUIP	
	a.	b.						
	ARMY	AIR FORCE	NAVY	USMC	CAGEC			
GROUP 04 AIR CLEANER ASSEMBLY								
FIG. 4 AIR CLEANER AND COMPONENTS								
1	PAOZZ	PAOZZ		PAOZZ	97403	13218E0250-43	CLAMP, HOSE: AIR DUCT	3
2	KFOZZ	KFOZZ		KFOZZ	97403	13214E9389-5	DUCT, AIR CLEANER, 4.5 IN. LG (PART OF KIT, P/N 13214E8187) UOC: A,B	1
2	KFOZZ	KFOZZ		KFOZZ	97403	13214E9389-4	DUCT, AIR CLEANER, 5.75 IN. LG (PART OF KIT, P/N 13214E8187)	1
3	PAOZZ	PAOZZ		PAOZZ	97403	13218E0504-67	SCREW, ASSEMBLED WASHER: AIR CLEANER, ELBOW TO CARBURETOR, 1/4-20 THD SIZE, 5/8 IN. LG	2
4	PAOZZ	PAOZZ		PAOZZ	97403	13214E7052	ELBOW, AIR CLEANER DUCT	1
5	KFOZZ	KFOZZ		KFOZZ	97403	9786E26-2	GASKET: AIR CLEANER ELBOW TO CARBURETOR (PART OF KITS, P/N 13214E8186 & P/N 13214E8192)	1
6	KFOZZ	KFOZZ		KFOZZ	97403	13214E9389-1	DUCT, AIR CLEANER, 5.75 IN. LG (PART OF KIT, P/N 13214E8187) UOC: C,D	1
7	PAOZZ	PAOZZ		PAOZZ	97403	13218E0504-67	SCREW AND WASHER, ASSEMBLED: AIR CLEANER MTG, 1/4-20 THD SIZE, 5/8 IN. LG	1
8	PAOZZ	PAOZZ		PAOZZ	97403	13218E0504-68	SCREW AND WASHER, ASSEMBLED: AIR CLEANER MTG, 1/4-10 THD SIZE, 3/4 IN LG	1
9	PAOZZ	PAOZZ		PAOZZ	97403	13215E3827	AIR CLEANER ASSEMBLY	1
10	PAOZZ	PAOZZ		PAOZZ	97403	13211E8449	.ELEMENT, AIR CLEANER	1
11	PAOZZ	PAOZZ		PAOZZ	97403	13206E0820	.INDICATOR, RESTRICTION	1
	PAOZZ	PAOZZ		PAOZZ	97403	13214E8187	KIT, AIR CLEANER DUCTS DUCT, 4.5" (1) 4-2 DUCT, 5.75" (1) 4-2 DUCT, 5.75" (1) 4-3	V
END OF FIGURE								

TM 9-2805-256-24P

TO 38G2-102-4

SL-4-81283C

SECTION II

3  
[ 4 THRU 6 ]

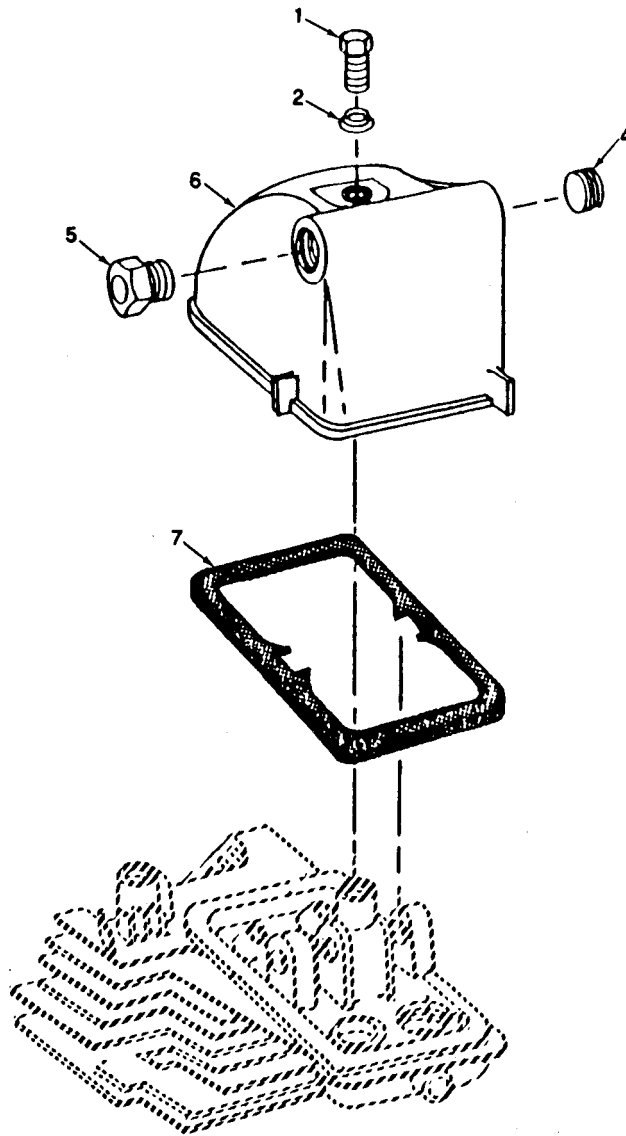


Figure 5. Rocker Arm Cover Assembly

TM9-2805-256-24P  
 TO 38G2-102-4  
 SL-4-81283C  
 SECTION II

(1)	(2)		(3)	(4)	(5)	(6)	(7)
ITEM NO.	SMR CODE		c.	d.	PART CAGEC	DESCRIPTION AND USABLE ON CODE	USMC QTY/ EQUIP
	a.	b.					
						GROUP 05 ROCKER ARM COVER ASSEMBLY	
						FIG. 5 ROCKER ARM COVER ASSEMBLY	
1	PAOZZ	PAOZZ		PAOZZ	97403	13218E0526-109 SCREW, MACHINE: ROCKER COVER MTG, 1/4-20 THD SIZE, 1/2 IN. LG	1
2	PAOZZ	PAOZZ		PAOZZ	97403	13215E3857-10 WASHER, SELF-SEALING	1
3	PAOZZ	PAOZZ		PAOZZ	97403	9786E44 COVER, ROCKER BOX ASSEMBLY	1
4	PAOZZ	PAOZZ		PAOZZ	96906	MS27769D2 .PLUG	1
5	PAOZZ	PAOZZ		PAOZZ	97403	9786E46 .VALVE, RELIEF	1
6	PAOZZ	PAOZZ		PAOZZ	97403	9786E45 .COVER, ROCKER BOX	1
7	KFOZZ	KFOZZ		KFOZZ	97403	9786E44-2 GASKET, ROCKER BOX COVER (PART OF KIT, P/N 13214E8186)	1
						END OF FIGURE	



TM 9-2805-256-24P  
TO 38G2-102-4  
SL-4-81283C

SECTION II

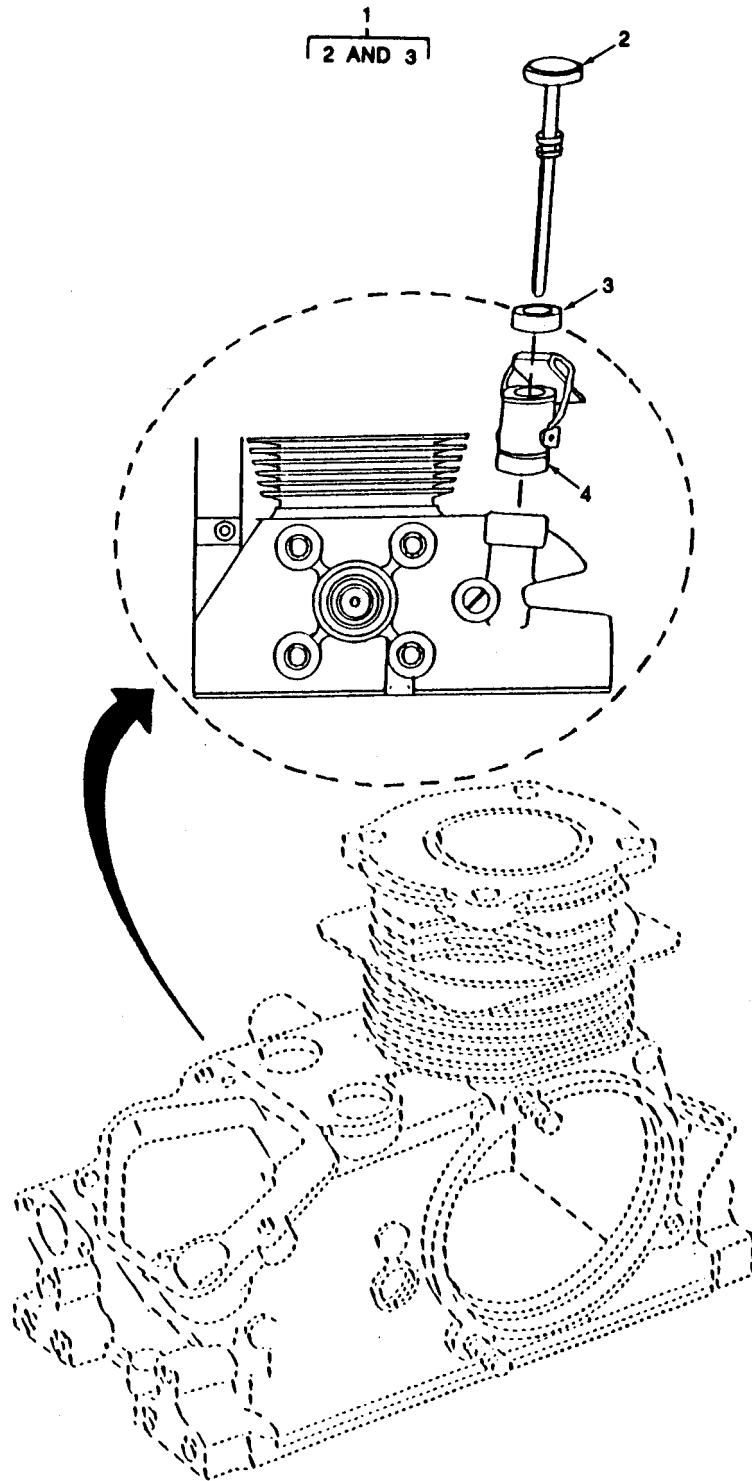


Figure 6. Oil Fill Tube and Gage Assembly

TM9-2805-256-24P  
 TO 38G2-102-4  
 SL-4-81283C  
 SECTION II

(1)	(2)		(3)	(4)	(5)	(6)	(7)
ITEM NO.	SMR CODE		c.	d.	PART CAGEC NUMBER	DESCRIPTION AND USABLE ON CODE	USMC QTY/ EQUIP
	a.	b.					
						GROUP 06 OIL FILL TUBE AND GAGE ASSEMBLY	
						FIG. 6 OIL FILL TUBE AND GAGE ASSEMBLY	
1	PAOZZ	PAOZZ		PAOZZ	97403 9786E114	ROD ASSEMBLY, OIL GAGE	1
2	XAOZZ	XAOZZ		XAOZZ	96906 MS29561-019	.ROD, OIL GAGE	1
3	PAOZZ	PAOZZ		PAOZZ	97403 9786E114-2	.PACKING, PREFORMED, O RING: OIL GAGE ROD	1
4	PAOZZ	PAOZZ		PAOZZ	97403 9786E17A-1	TUBE ASSEMBLY, OIL FILL	1
						END OF FIGURE	

TM 9-2805-256-24P  
TO 38G2-102-4  
SL-4-81283C

SECTION II

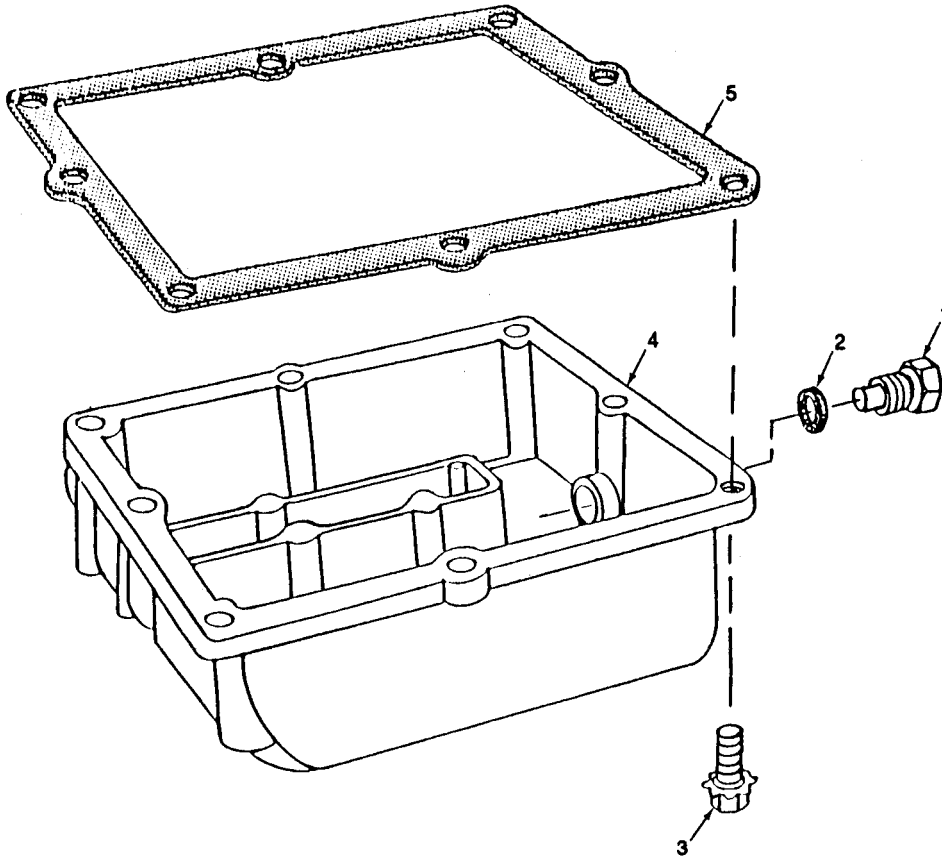


Figure 7. Oil Pan Assembly

(1)	(2)				(3)	(4)	(5)	(6)	(7)
ITEM NO.	SMR CODE				CAGEC	PART NUMBER	DESCRIPTION AND USABLE ON CODE	QTY	USMC QTY/ EQUIP
	ARMY	AIR FORCE	NAVY	USMC					
							GROUP 07 OIL PAN ASSEMBLY		
							FIG. 7 OIL PAN AND COMPONENTS		
1	PAOZZ	PAOZZ		PAOZZ	97403	13214E9570	PLUG, MAGNETIC: OIL PAN HEAD	2	
2	PAOZZ	PAOZZ		PAOZZ	97403	13215E3857-14	WASHER, ROLLED: OIL DRAIN PLUG	2	
3	PAFZZ	PAFZZ		PAFZZ	97403	13218E0504-56	SCREW AND WASHER, ASSEMBLED: OIL PAN MTG, NO. 10-24 THD SIZE, 9/16 IN. LG	8	
4	PAFZZ	PAFZZ		PAFZZ	97403	9786E89	PAN ASSEMBLY, OIL	1	
5	PAFZZ	PAFZZ		PAFZZ	97403	9786E90-1	GASKET, OIL PAN MTG (PART OF KIT, P/N 13214E8186)	1	
							END OF FIGURE		

SECTION II

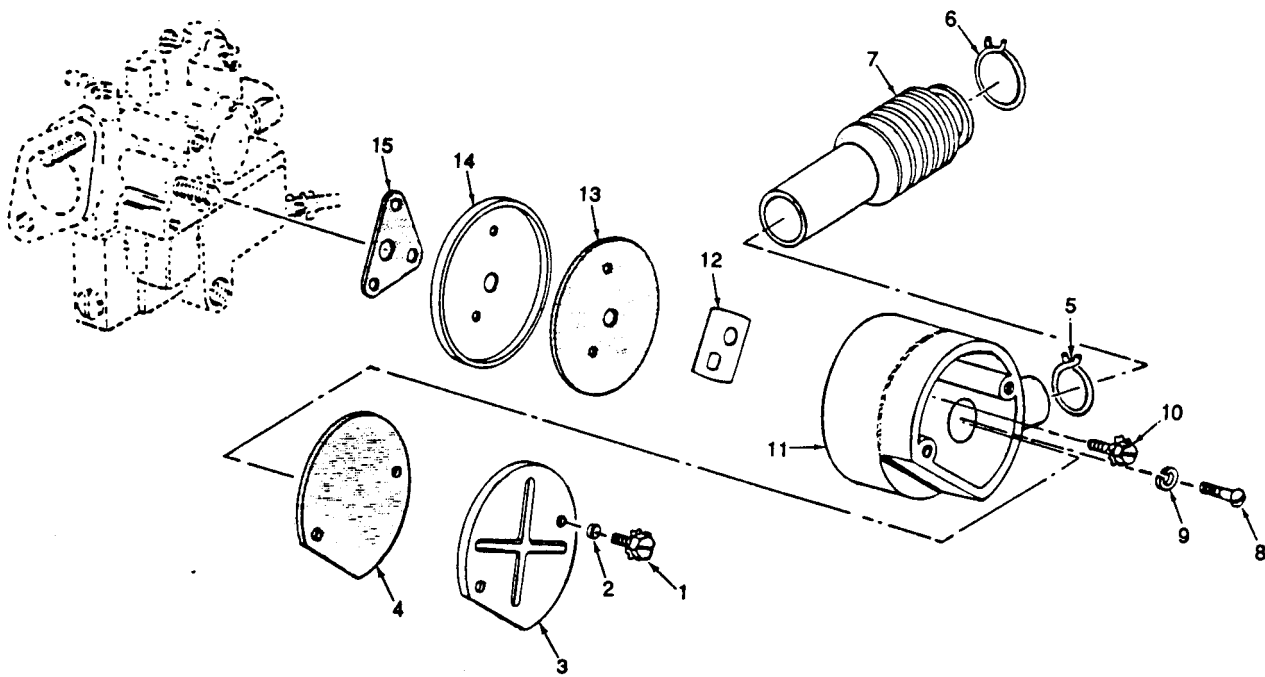


Figure 8. Governor Control Components

(1)	(2)		(3)	(4)	(5)	(6)	(7)
ITEM NO.	SMR CODE		c. NAVY	d. USMC	PART CAGEC NUMBER	DESCRIPTION AND USABLE ON CODE	USMC QTY/ EQUIP
	a. ARMY	b. AIR FORCE					
						GROUP 08 ENGINE SPEED GOVERNOR AND CONTROLS	
						FIG. 8 GOVERNOR CONTROL COMPONENTS	
1	PAOZZ	PAOZZ		PAOZZ	97403 13218E0526-24	SCREW AND WASHER, ASSEMBLED: CONTROL COVER MTG, NO. 6-32 THD SIZE, 3/8 IN. LG	2
2	PAOZZ	PAOZZ		PAOZZ	97403 13215E3857-6	WASHER, ROLLED	2
3	PAOZZ	PAOZZ		PAOZZ	97403 9786E63-2	COVER, THROTTLE HOUSING: FRONT	1
4	PAOZZ	PAOZZ		PAOZZ	97403 9786E64-6	GASKET, THROTTLE HOUSING: FRONT (PART OF KIT, P/N 13214E8186)	1
5	KFOZZ	KFOZZ		KFOZZ	97403 13215E3835	SPRING, RETAINING GOVERNOR ROD HOUSING TO THROTTLE HOUSING (PART OF KIT, P/N 13214E8189)	1
6	KFOZZ	KFOZZ		KFOZZ	97403 13215E3836	SPRING, RETAINING: GOVERNOR ROD HOUSING TO BREAKER POINT COVER (PART OF KIT, P/N 13214E8189)	1
7	KFOZZ	KFOZZ		KFOZZ	97403 9786E64-1	HOUSING GOVERNOR CONTROL ROD (PART OF KIT, P/N 13214E8189)	1
8	PAOZZ	PAOZZ		PAOZZ	97403 13215E3832	SCREW, THROTTLE: LEVER TO CARBURETOR	1
9	PAOZZ	PAOZZ		PAOZZ	97403 13218E0519-3	WASHER, SPRING LOCK	1
10	PAOZZ	PAOZZ		PAOZZ	97403 13218E0504-13	SCREW AND WASHER, ASSEMBLED: THROTTLE CONTROL HOUSING MTG	2
11	XBOZZ	XBOZZ		XBOZZ	97403 9786E63-1	HOUSING, THROTTLE CONTROL	1
12	PAOZZ	PAOZZ		PAOZZ	97403 13214E7067	LEVER, THROTTLE CONTROL	1
13	KFOZZ	KFOZZ		KFOZZ	97403 9786E65-3	GASKET, THROTTLE HOUSING: REAR (PART OF KIT, P/N 13214E8186)	1
14	XBOZZ	XBOZZ		XBOZZ	97403 9786E64-2	COVER, THROTTLE HOUSING: REAR	1
15	PAOZZ	PAOZZ		PAOZZ	97403 9786E65-4	GASKET: THROTTLE HOUSING TO CARBURETOR (PART OF KIT, P/N 13214E8186)	1
	PAOZZ	PAOZZ		PAOZZ	97403 13214E8189	KIT, GOVERNOR HOUSING SPRING (1) 8-5 SPRING (1) 8-6 HOUSING (1) 8-7	V
						END OF FIGURE	

SECTION II

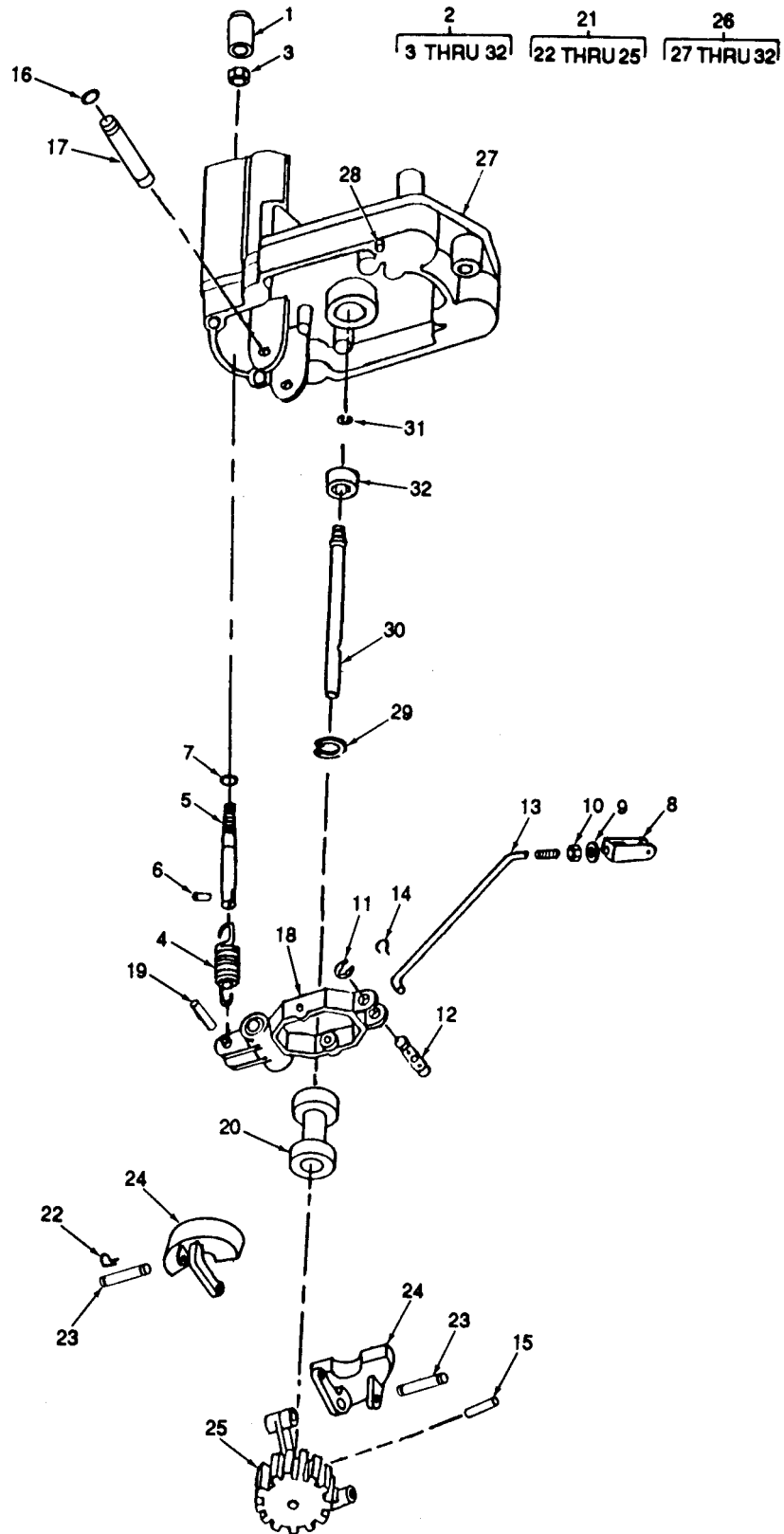


Figure 9. Engine Speed Governor Assembly (with Steel Gear)

TM9-2805-256-24P  
 TO 38G2-102-4  
 SL-4-81283C  
 SECTION II

(1)	(2)		(3)	(4)	(5)	(6)	(7)	
ITEM NO.	SMR CODE		c.	d.	PART NUMBER	DESCRIPTION AND USABLE ON CODE	USMC QTY/ EQUIP	
	a.	b.						
	ARMY	AIR FORCE	NAVY	USMC	CAGEC			
						GROUP 08 ENGINE SPEED GOVERNOR AND CONTROLS		
						FIG. 9 ENGINE SPEED GOVERNOR ASSEMBLY (WITH STEEL GEAR)		
1	PAOZZ	PAOZZ		PAOZZ	97403	9786E65-5	CAP, PROTECTIVE: GOVERNOR ADJUSTING SCREW	1
2	KFFZZ	KFFZZ		KFFZZ	97403	13214E7056	GOVERNOR ASSEMBLY: STEEL GEAR TYPE (PART OF KIT, P/N 13214E8217) UOC: A,B,C	
3	PAOZZ	PAOZZ		PAOZZ	96906	MS21042-5	.NUT, SELF-LOCKING: 5/16-24 THD SIZE (PART OF KIT, P/N 13214E8217)	1
4	PAFZZ	PAFZZ		PAFZZ	97403	9786E75-3	.MAIN STRING, GOVERNOR: YOKE TO ROD	1
5	PAFZZ	PAFZZ		PAFZZ	97403	9786E76A	.ROD, SPRING CONTROL: ENGINE SPEED GOVERNOR	1
6	PAFZZ	PAFZZ		PAFZZ	96906	MS16562-28	.PIN, SPRING	1
7	PAOZZ	PAOZZ		PAOZZ	96906	MS29561-009	.PACKING, PREFORMED: SPRING CONTROL ROD	1
8	PAOZZ	PAOZZ		PAOZZ	97403	9786E64A2	.CLEVIS, THROTTLE CONTROL	1
9	PAOZZ	PAOZZ		PAOZZ	97403	13218E0519-32	.WASHER, LOCKSPRING: THROTTLE ROD	1
10	PAOZZ	PAOZZ		PAOZZ	96906	MS35469-242	.NUT, PLAIN: THROTTLE ROD	1
11	PAFZZ	PAFZZ		PAFZZ	96906	MS16624-1025	.RING, RETAINING SHAFT: EXTERNAL	2
12	XDFZZ	XDFZZ		XDFZZ	97403	9786E75-1	.SWIVEL, GOVERNOR	1
13	PAFZZ	PAFZZ		PAFZZ	97403	9786E64-3	.ROD, GOVERNOR CONTROL	1
14	PAFZZ	PAFZZ		PAFZZ	97403	9786E75-4	.SPRING, GOVERNOR ROD RETAINING	1
15	PAFZZ	PAFZZ		PAFZZ	96906	MS171525	.PIN-SPRING, RETAINING: CARRIER AND GEAR FLYWEIGHT	1
16	PAFZZ	PAFZZ		PAFZZ	96906	MS16633-1018	.RING, RETAINING: SHAFT AND YOKE AXLE	2
17	XAFZZ	XAFZZ		XAFZZ	97403	9786E75-2	.AXLE, YOKE: ENGINE SPEED GOVERNOR	1
18	PAFZZ	PAFZZ		PAFZZ	97403	9786E81	.SPRING AND CABLE YOKE ASSEMBLY (STEEL TYPE)	1
19	PAFZZ	PAFZZ		PAFZZ	96906	MS16562-40	.PIN, SPRING-TUBULAR, RETAINING: SPRING AND CABLE YOKE	1



TM9-2805-256-24P  
 TO 38G2-102-4  
 SL-4-81283C  
 SECTION II

(1)	(2)		(3)	(4)	(5)	(6)	(7)	
ITEM NO.	SMR CODE		c.	d.	PART NUMBER	DESCRIPTION AND USABLE ON CODE	USMC QTY/ EQUIP	
	a.	b.						
	ARMY	AIR FORCE	NAVY	USMC	CAGEC			
20	PAFZZ	PAFZZ		PAFZZ	97403	9786E76A2	.RISER, BUSHING AND BEARING ASSEMBLY (STEEL TYPE)	1
21	PAFZZ	PAFZZ		PAFZZ	97403	9786E83	.FLYWEIGHT AND CARRIER ASSEMBLY: STEEL TYPE GEARS	1
22	PAFZZ	PAFZZ		PAFZZ	97403	13214E9385	..CLIP, RETAINING: AXLE TO FLYWEIGHT, 3/32 DIA	4
23	XAFZZ	XAFZZ		XAFZZ	97403	9786E83-2	..AXLE, FLYWEIGHT, GOVERNOR	2
24	XAFZZ	XAFZZ		XAFZZ	97403	9786E84	..FLYWEIGHT ASSEMBLY: STEEL TYPE	2
25	XAFZZ	XAFZZ		XAFZZ	97403	9786E83-3	..CARRIER AND GEAR FLYWEIGHT: STEEL TYPE	1
26	XAFZZ	XAFZZ		XAFZZ	97403	13226E1650	.SHAFT AND ACCESSORY CAP ASSEMBLY BREAKER IGNITIONS ONLY	1
27	XAFZZ	XAFZZ		XAFZZ	97403	13226E1648	..CAP, ACCESSORY HOUSING	1
28	PAFZZ	PAFZZ		PAFZZ	96906	MS16555-329	..PIN, HEADLESS DOWEL: 1/8 IN. DIA. X 3/4 IN. LG	2
29	PAFZZ	PAFZZ		PAFZZ	96906	MS16625-3062	..RING, RETAINING INTERNAL	1
30	XAFZZ	XAFZZ		XAFZZ	97403	13226E1647	..SHAFT, ACCESSORY	1
31	PAFZZ	PAFZZ		PAFZZ	96906	MS16624-3025	..RING, RETAINING: EXTERNAL	1
32	PAFZZ	PAFZZ		PAFZZ	97403	13206E1442	..BEARING BALL: SINGLE ROW	1
	PAOZZ	PAOZZ		PAOZZ	97403	13214E8217	KIT, GOVERNOR REPLACEMENT GROMMET (2) 2-11 GOVERNOR (1) 9-2 NUT (1) 9-3 SPRING (1) 9-4 ROD (1) 9-5 PACKING (1) 9-7 CLEVIS (1) 9-8 WASHER (1) 9-9 NUT (1) 9-10 RING (3) 9-11 SWIVEL (1) 9-12 ROD (1) 9-13 SPRING (1) 9-14 PIN (1) 9-15 RING (2) 9-16 AXLE (1) 9-17 SPRING (1) 9-18 RISER (1) 9-20 FLYWEIGHT (1) 9-21 PIN (2) 9-28	V
END OF FIGURE								

SECTION II

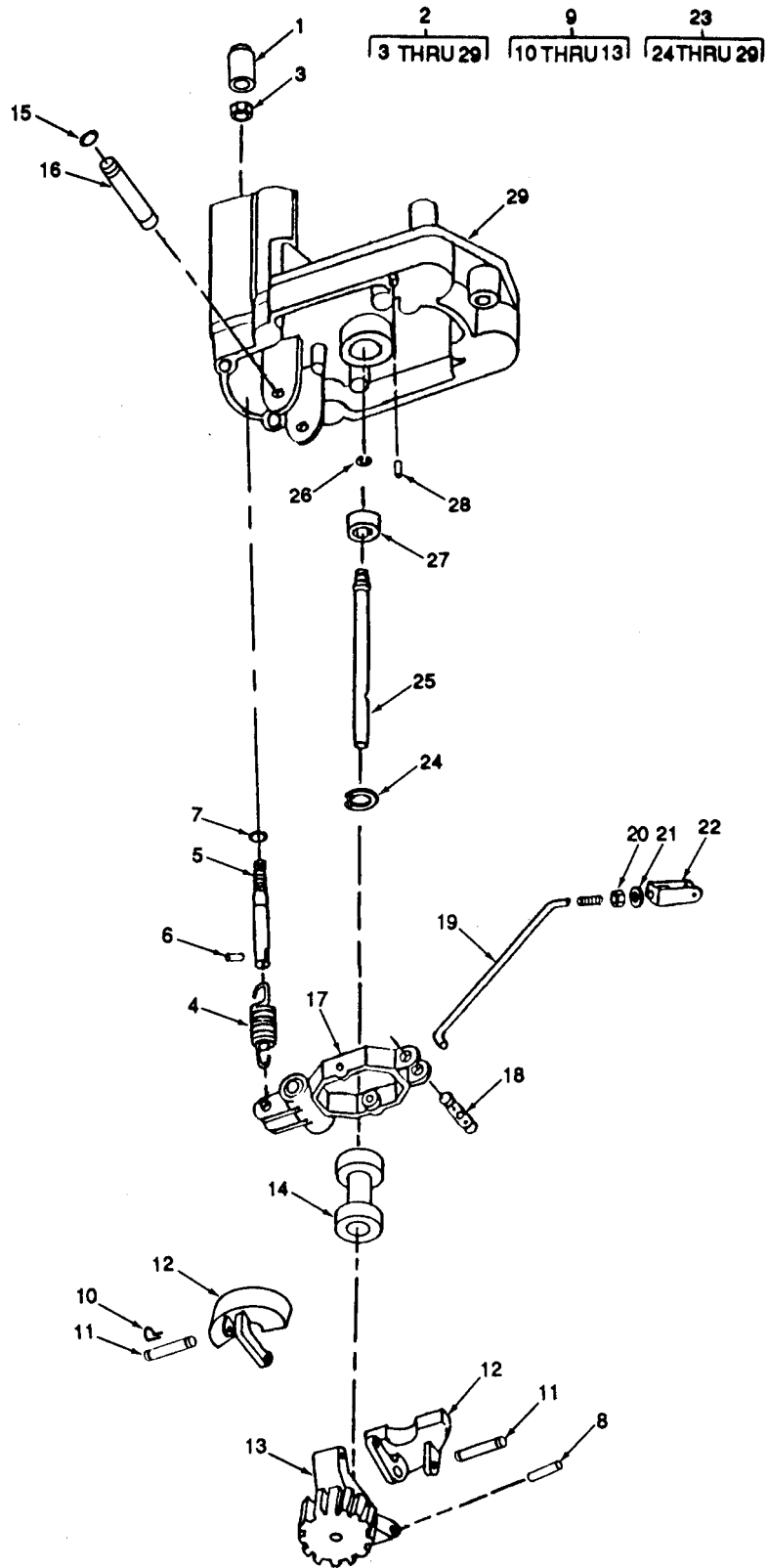


Figure 10. Engine Speed Governor Assembly (with Plastic Gear)

TM9-2805-256-24P  
 TO 38G2-102-4  
 SL-4-81283C  
 SECTION II

(1)	(2)		(3)	(4)	(5)	(6)	(7)
ITEM NO.	SMR CODE		c.	d.	PART NUMBER	DESCRIPTION AND USABLE ON CODE	USMC QTY/ EQUIP
	a.	b.					
	ARMY	AIR FORCE	NAVY	USMC	CAGEC		
						GROUP 08 ENGINE SPEED GOVERNOR AND CONTROLS	
						FIG. 10 ENGINE SPEED GOVERNOR ASSEMBLY (WITH PLASTIC GEAR)	
1	PAOZZ	PAOZZ		PAOZZ	97403	9786E65-5 CAP, PROTECTIVE: GOVERNOR ADJUSTING SCREW	1
2	PAFFF	PAFFF		PAFFF	97403	13227E9685 GOVERNOR ASSEMBLY, PLASTIC (USE FOR ENGINES WITH BREAKERLESS IGNITION SYSTEMS ONLY) UOC: D	1
3	PAOZZ	PAOZZ		PAFZZ	96906	MS21042-5 .NUT, SELF-LOCKING: 5/16-24 THD SIZE	1
4	PAFZZ	PAFZZ		PAFZZ	97403	13226E8007 .MAIN SPRING, YOKE TO ROD	1
5	PAFZZ	PAFZZ		PAFZZ	97403	9786E76A .ROD, SPRING CONTROL	1
6	PAFZZ	PAFZZ		PAFZZ	96906	MS16562-28 .PIN, SPRING	1
7	PAOZZ	PAOZZ		PAOZZ	96906	MS29561-009 .PACKING, PREFORMED	1
8	PAFZZ	PAFZZ		PAFZZ	96906	MS171525 .PIN, SPRING: CARRIER ASSEMBLY MTG	1
9	PAFZZ	PAFZZ		PAFZZ	97403	13226E8008 .FLYWEIGHT AND CARRIER ASSEMBLY, PLASTIC TYPE	1
10	PAFZZ	PAFZZ		PAFZZ	97403	13214E9385 ..RING, RETAINING	4
11	XAFZZ	XAFZZ		XAFZZ	97403	9786E83-2 ..AXLE, FLYWEIGHT	2
12	XAFZZ	XAFZZ		XAFZZ	97403	13226E8009 ..FLYWEIGHT ASSEMBLY	2
13	XAFZZ	XAFZZ		XAFZZ	97403	13226E8014 ..CARRIER AND GEAR, PLASTIC TYPE	1
14	PAFZZ	PAFZZ		PAFZZ	97403	13226E8011 .RISER, BUSHING AND BEARING PLASTIC TYPE	1
15	PAFZZ	PAFZZ		PAFZZ	96906	MS16633-1018 .RING, RETAINING	1
16	XBFZZ	XBFZZ		XBFZZ	97403	9786E75-2 .AXLE, YOKE	1
17	PAFZZ	PAFZZ		PAFZZ	97403	13226E8006 .SPRING AND CABLE YOKE ASSEMBLY	1
18	PAFZZ	PAFZZ		PAFZZ	97403	13226E8015 .SWIVEL, GOVERNOR	1
19	PAFZZ	PAFZZ		PAFZZ	97403	9786E64-3 .ROD, GOVERNOR CONTROL	1
20	PAOZZ	PAOZZ		PAOZZ	96906	MS35469-242 .NUT, HEX	1
21	PAOZZ	PAOZZ		PAOZZ	97403	13218E0519-32 .WASHER, LOCK	1
22	PAOZZ	PAOZZ		PAOZZ	97403	9786E64A2 .CLEVIS, THROTTLE CONTROL	1

TM9-2805-256-24P  
 TO 38G2-102-4  
 SL-4-81283C  
 SECTION II

(1)	(2)		(3)	(4)	(5)	(6)	(7)	
ITEM NO.	SMR CODE		c.	d.	PART NUMBER	DESCRIPTION AND USABLE ON CODE	USMC QTY/ EQUIP	
	a.	b.						ARMY
23	XAFZZ	XAFZZ		XAFZZ	97403	13226E1650	.SHAFT AND ACCESSORY CAP ASSEMBLY BREAKERLESS IGNITION ONLY	1
24	XAFZZ	XAFZZ		XAFZZ	96906	MS16625-3062	..RING, RETAINING INTERNAL	1
25	XAFZZ	XAFZZ		XAFZZ	97403	13226E1647	..SHAFT, ACCESSORY	1
26	XAFZZ	XAFZZ		XAFZZ	96906	MS16624-3025	..RING, RETAINING: EXTERNAL	1
27	PAFZZ	PAFZZ		PAFZZ	97403	13206E1442	..BEARING BALL: SINGLE ROW	1
28	PAFZZ	PAFZZ		PAFZZ	96906	MS16555-329	..PIN, HEADLESS DOWEL: 1/8 IN. DIA X 3/4 IN. LG	2
29	XAFZZ	XAFZZ		XAFZZ	97403	13226E1648	..CAP, ACCESSORY HOUSING	1

END OF FIGURE

SECTION II

1  
2 THRU 7

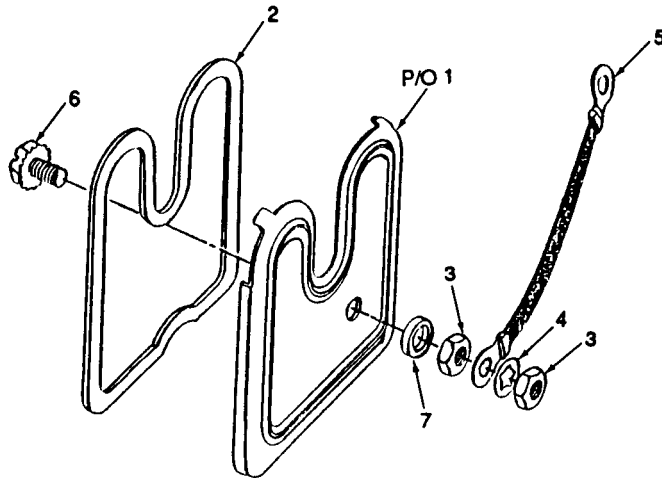
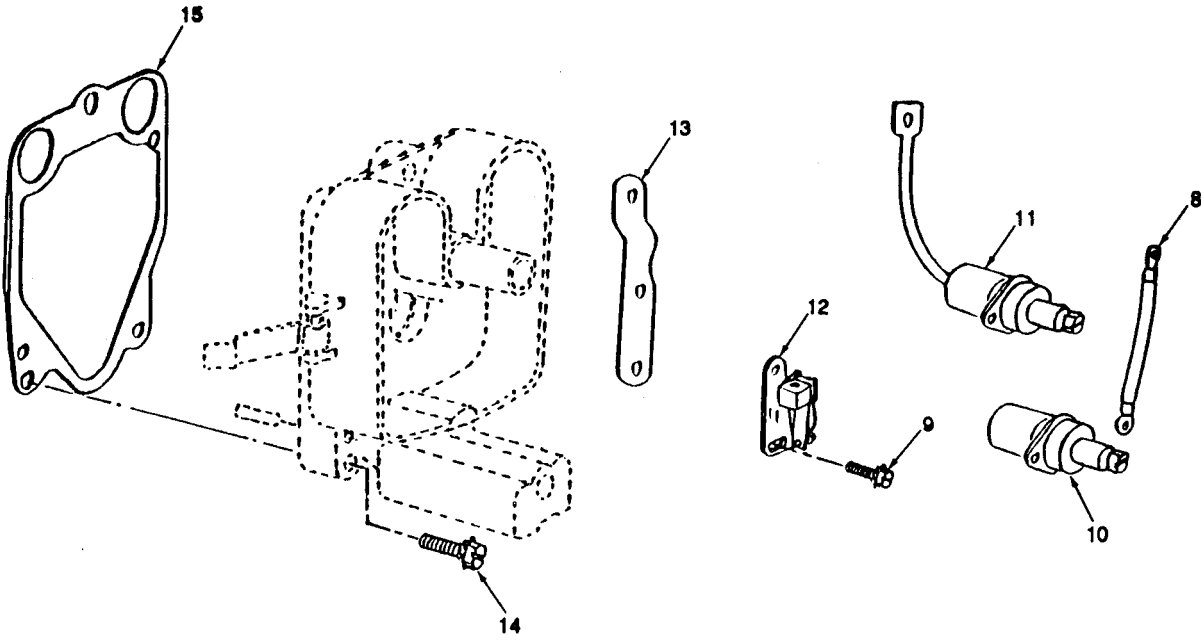


Figure 11. Governor Cap and Breaker Point Assembly

TM9-2805-256-24P  
 TO 38G2-102-4  
 SL-4-81283C  
 SECTION II

(1)	(2)		(3)	(4)	(5)	(6)	(7)	
ITEM NO.	SMR CODE		c.	d.	PART NUMBER	DESCRIPTION AND USABLE ON CODE	USMC QTY/ EQUIP	
	a.	b.						
	ARMY	AIR FORCE	NAVY	USMC	CAGEC			
GROUP 09 IGNITION SYSTEM								
FIG. 11 GOVERNOR CAP AND BREAKER POINT ASSEMBLY								
1	PAOZZ	PAOZZ		PAOZZ	97403	13206E1400	COVER ASSEMBLY, BREAKER POINT UOC: A,B,C	1
1	XDOZZ	XDOZZ		XDOZZ	97403	13226E6178	COVER ASSEMBLY, GOVERNOR (USE WHEN BREAKERLESS IGNITOR ADDED TO ENGINE) UOC: A,B,C	1
2	PAOZZ	PAOZZ		PAOZZ	97403	13206E0434	.GASKET, BREAKER POINT COVER (PART OF KIT, P/N 13214E8186) UOC: A,B,C	1
3	PAOZZ	PAOZZ		PAOZZ	97403	13218E0320-249	.NUT, MACHINE: NO. 10-24 THD SIZE UOC: A,B,C	2
4	PAOZZ	PAOZZ		PAOZZ	96906	MS35333-73	.WASHER, LOCK UOC: A,B,C	2
5	PAOZZ	PAOZZ		PAOZZ	97403	13215E3815	.STRAP, GROUNDING UOC: A,B,C	1
6	PAOZZ	PAOZZ		PAOZZ	97403	13218E0504-56	.SCREW AND WASHER, ASSEMBLED UOC: A,B,C	1
7	PAOZZ	PAOZZ		PAOZZ	80205	NAS1598-3Y	.WASHER, SELF-SEALING UOC: A,B,C	1
8	PAOZZ	PAOZZ		PAOZZ	97403	9786E66-1	CONNECTOR: BREAKER POINT TO CAPACITOR UOC: A,B,C	1
9	PAOZZ	PAOZZ		PAOZZ	97403	13218E0504-32	SCREW AND LOCKWASHER ASSEMBLY: CONTACT CAPACITOR AND CAM MTG, NO. 8-32 THD SIZE, 5/16 IN. LG UOC: A,B,C	2
10	PAOZZ	PAOZZ		PAOZZ	97403	9786E69-3	CONDENSER ASSEMBLY, IGNITION UOC: A,B	1
11	KFOZZ	KFOZZ		KFOZZ	97403	13212E3762-2	CAPACITOR (PART OF KIT, P/N 13214E8180) UOC: C	1
12	KFOZZ	KFOZZ		KFOZZ	97403	9786E70	BREAKER ASSEMBLY (PART OF KIT, P/N 13214E8180) UOC: A,B,C	1
13	PAOZZ	PAOZZ		PAOZZ	97403	13214E7057	STRIP, JUMPER UOC: A,B,C	1
14	PAFZZ	PAFZZ		PAFZZ	97403	13218E0504-59	SCREW, ASSEMBLED: W/WASHER, GOVERNOR MTG	3

SECTION II

(1)	(2)				(3)	(4)	(5)	(6)	(7)
ITEM NO.	SMR CODE				CAGEC	PART NUMBER	DESCRIPTION AND USABLE ON CODE	QTY	USMC QTY/ EQUIP
	ARMY	AIR FORCE	NAVY	USMC					
15	PAFZZ	PAFZZ		PAFZZ	97403	9786E65-1	GASKET, ACCESSORY HOUSING MOUNTING: GOVERNOR (PART OF KIT, P/N 13214E8186)	1	
	PAOZZ	PAOZZ		PAOZZ	97403	13214E8180	KIT, IGNITION REPAIR UOC: A,B,C CAPACITOR (1) 11-11 BREAKER (1) 11-12	V	
END OF FIGURE									

SECTION II

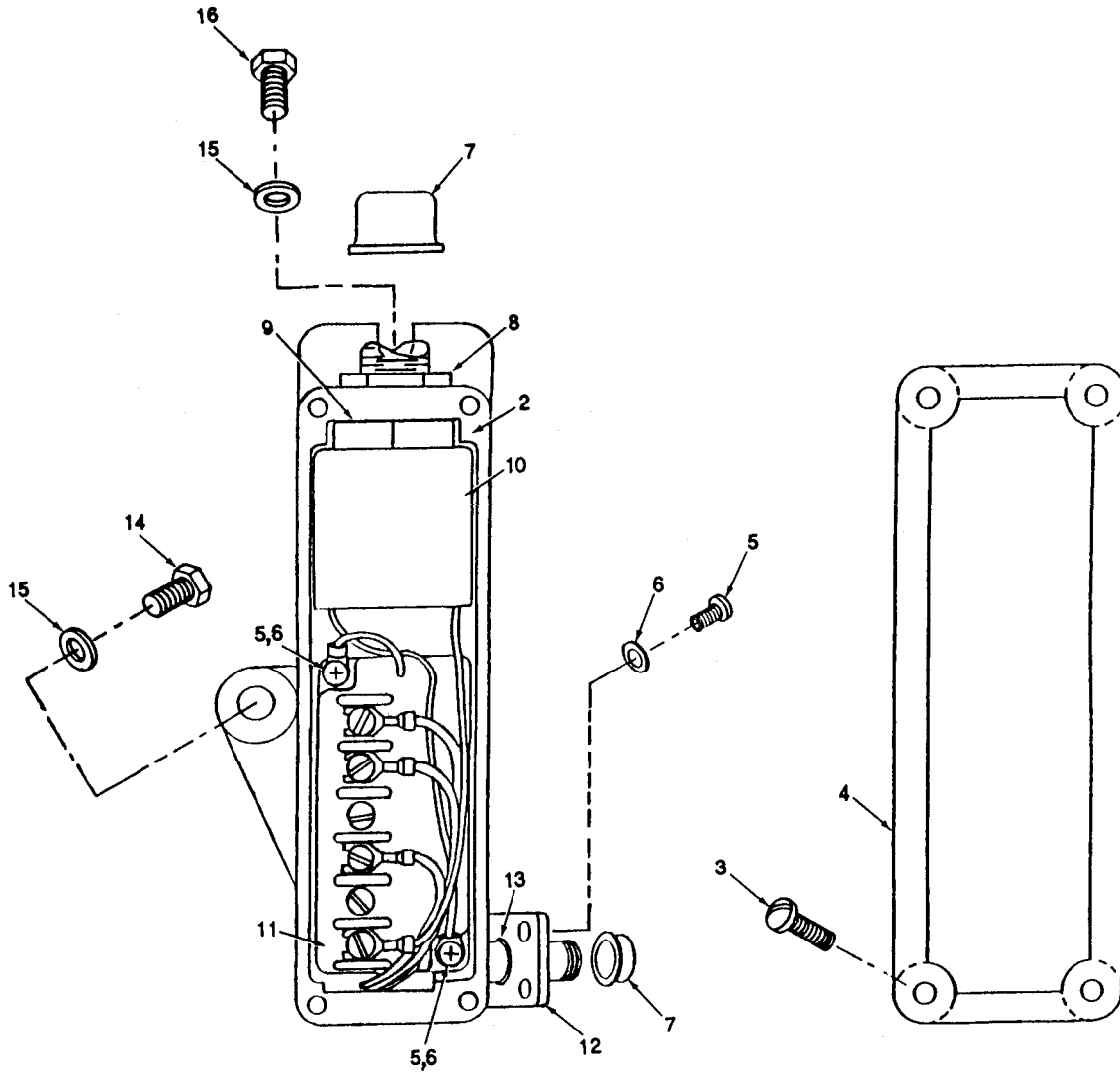


Figure 12. Breakerless Ignition System



TM9-2805-256-24P  
 TO 38G2-102-4  
 SL-4-81283C  
 SECTION II

(1)	(2)		(3)	(4)	(5)	(6)	(7)	
ITEM NO.	SMR CODE		c.	d.	PART NUMBER	DESCRIPTION AND USABLE ON CODE	QTY	USMC QTY/ EQUIP
	a.	b.						
	ARMY	AIR FORCE	NAVY	USMC	CAGEC			
GROUP 09 IGNITION SYSTEM								
FIG. 12 BREAKERLESS IGNITION SYSTEM								
1	PAFFF	PAFFF		PAFFF	97403	13226E1655	1	
								IGNITION CONTROL UNIT (PART OF KIT, P/N 13226E6175) UOC: D
2	XAFZZ	XAFZZ		XAFZZ	97403	13226E1651	1	
								.ENCLOSURE, IGNITION UOC: D
3	PAFZZ	PAFZZ		PAFZZ	96906	MS3212-25	4	
								.SCREW #8-32 X .500 UOC: D
4	XBFZZ	XBFZZ		XBFZZ	97403	13226E1654	1	
								.COVER, ENCLOSURE UOC: D
5	PAFZZ	PAFZZ		PAFZZ	96906	MS35206-227	6	
								.SCREW MACHINE UOC: D
6	PAFZZ	PAFZZ		PAFZZ	96906	MS35333-37	6	
								.WASHER, LOCK #6 UOC: D
7	XBFZZ	XBFZZ		XBFZZ	81349	MIL-C-5501/7	2	
								.CAP PROTECTIVE UOC: D
8	PAFZZ	PAFZZ		PAFZZ	97403	13226E1613	1	
								.NUT, TRANSFORMER UOC: D
9	PAFZZ	PAFZZ		PAFZZ	96906	MS28775-019	1	
								.PREFORMED "O" RING UOC: D
10	PAFZZ	PAFZZ		PAFZZ	97403	13226E1632-2	1	
								.TRANSFORMER, IGNITION UOC: D
11	PAFZZ	PAFZZ		PAFZZ	97403	13226E1633	1	
								.ELECTRONIC, MODULE UOC: D
12	PAFZZ	PAFZZ		PAFZZ	97403	13226E1653	1	
								.CONNECTOR, RECEPTACLE, WIRED UOC: D
13	PAFZZ	PAFZZ		PAFZZ	96906	MS28775-014	1	
								.PREFORMED "O" RING UOC: D
14	PAFZZ	PAFZZ		PAFZZ	97403	13218E0504-70	1	
								SCREW, ASSEMBLED (PART OF KIT, P/N 13226E6175) UOC: D
15	PAFZZ	PAFZZ		PAFZZ	97403	13206E0444-5	2	
								WASHER, PLAIN (PART OF KIT, P/N 13226E6175) UOC: D

TM9-2805-256-24P  
 TO 38G2-102-4  
 SL-4-81283C

SECTION II

(1)	(2)				(3)	(4)	(5)	(6)	(7)
ITEM NO.	SMR CODE				USMC CAGEC	PART NUMBER	DESCRIPTION AND USABLE ON CODE	QTY	USMC QTY/ EQUIP
	a.	b.	c.	d.					
16	PAFZZ	PAFZZ		PAFZZ	97403	13218E0504-67	SCREW, ASSEMBLED (PART OF KIT, P/N 13226E6175) UOC: D	1	

END OF FIGURE

TM 9-2805-256-24P

TO 38G2-102-4

SL-4-81283C

SECTION II

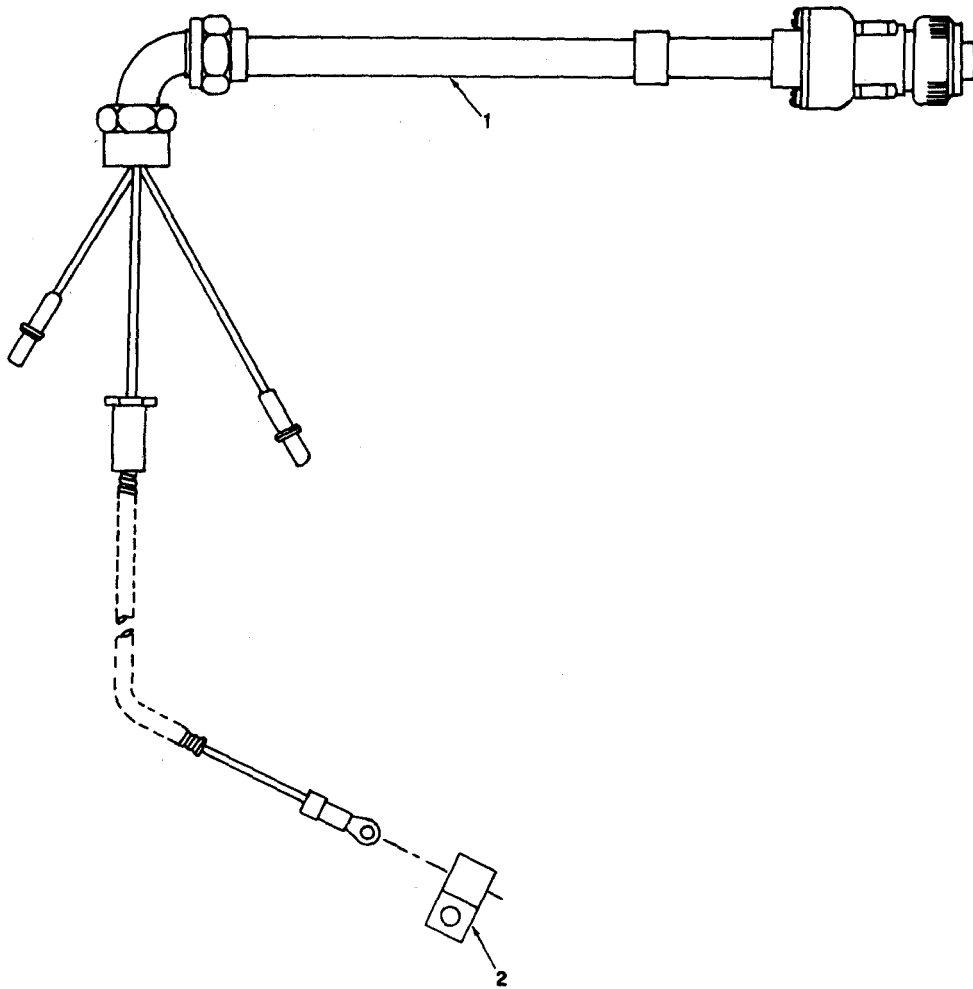


Figure 13. Low Voltage Cable

SECTION II

(1)	(2)				(3)	(4)	(5)	(6)	(7)
ITEM NO.	SMR CODE				CAGEC	PART NUMBER	DESCRIPTION AND USABLE ON CODE	QTY	USMC QTY/ EQUIP
	a. ARMY	b. AIR FORCE	c. NAVY	d. USMC					
GROUP 09 IGNITION SYSTEM									
FIG. 13 LOW VOLTAGE CABLE									
1	PAFZZ	PAFZZ		PAFZZ	97403	13226E1658	CABLE, LOW VOLTAGE (PART OF KIT, P/N 13226E6175) UOC: D	1	
2	PAOZZ	PAOZZ		PAOZZ	96906	MS21333-98	CLAMP, LOOP,.188 ID (PART OF KIT, P/N 13226E6175) UOC: D	1	
END OF FIGURE									

TM 9-2805-256-24P  
TO 38G2-102-4  
SL-4-81283C

SECTION II

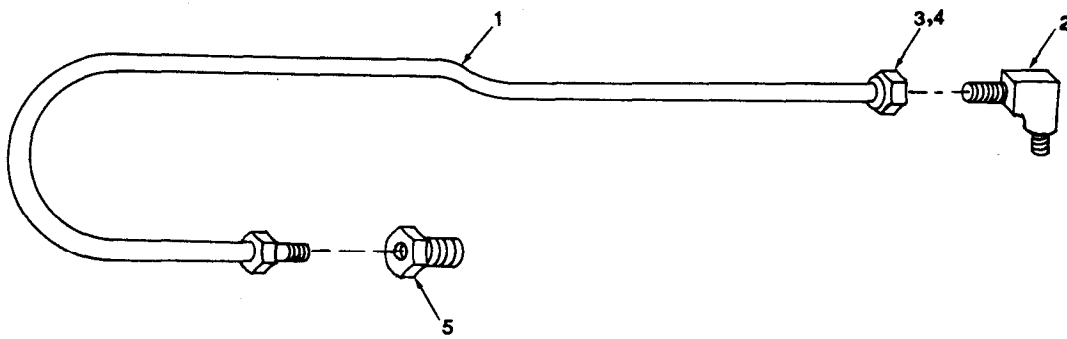


Figure 14. Breather Line Assembly

(1)	(2)		(3)	(4)	(5)	(6)	(7)
ITEM NO.	SMR CODE		CAGEC	PART NUMBER	DESCRIPTION AND USABLE ON CODE	QTY	USMC QTY/ EQUIP
	a.	b.					
	ARMY	AIR FORCE	NAVY	USMC			
GROUP 10 BREATHER LINE ASSEMBLY							
FIG. 14 BREATHER LINE ASSEMBLY							
1	PAOZZ	PAOZZ		PAOZZ	97403 13214E7058		1
2	PAOZZ	PAOZZ		PAOZZ	24617 137398		1
3	PAOZZ	PAOZZ		PAOZZ	97403 9786E60-2		1
4	PAOZZ	PAOZZ		PAOZZ	97403 9786E60-3		1
5	PAFZZ	PAFZZ		PAFZZ	97403 13218E0135-3		1
CONNECTOR: CYLINDER HEAD TO BREATHER (COMPONENT OF CYLINDER HEAD ASSEMBLY, P/N 13215E4181)							
END OF FIGURE							

SECTION II

2  
3 THRU 6

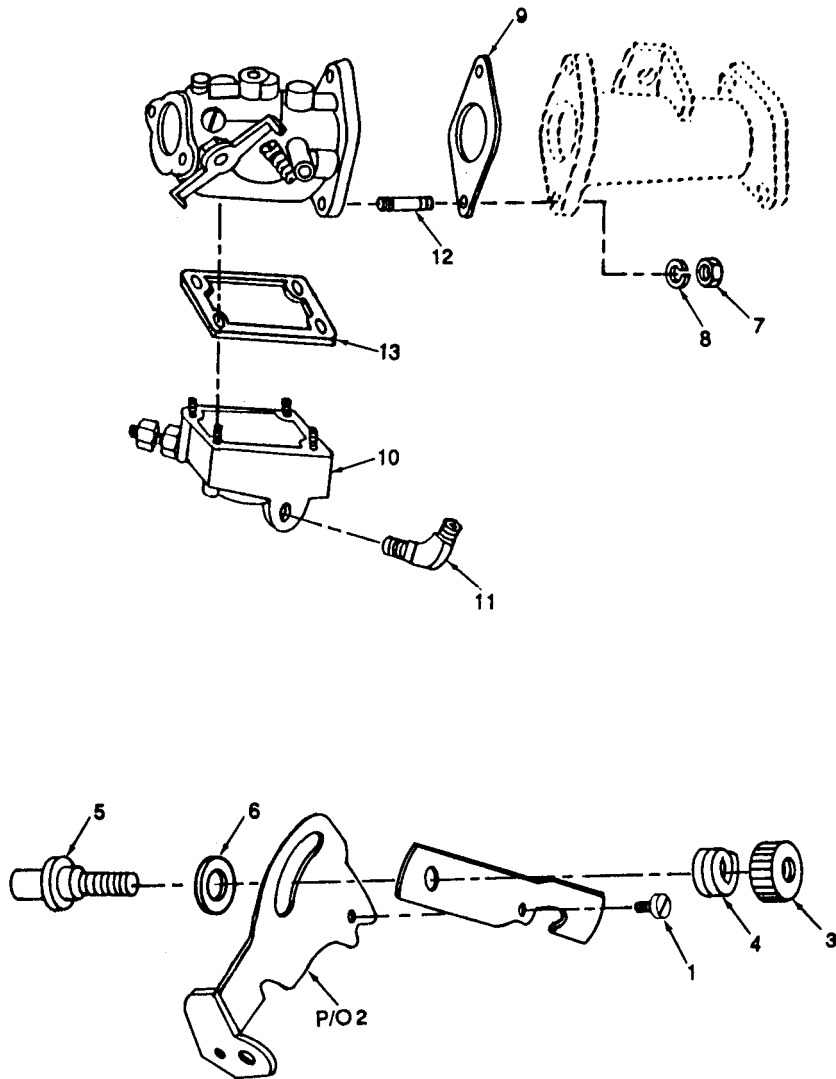


Figure 15. Carburetor and Throttle Control

TM9-2805-256-24P  
 TO 38G2-102-4  
 SL-4-81283C  
 SECTION II

(1)	(2)		(3)	(4)	(5)	(6)	(7)
ITEM NO.	SMR CODE		c.	d.	PART NUMBER	DESCRIPTION AND USABLE ON CODE	USMC QTY/ EQUIP
	a.	b.					
	ARMY	AIR FORCE	NAVY	USMC	CAGEC		
						GROUP 11 CARBURETOR AND THROTTLE CONTROL	
						FIG. 15 CARBURETOR AND THROTTLE CONTROL	
1	PAOZZ	PAOZZ		PAOZZ	97403 13206E1413	SCREW, THROTTLE CONTROL MOUNTING: SPECIAL	1
2	PAOZZ	PAOZZ		PAOZZ	97403 13206E1430	CONTROL ASSEMBLY, CARBURETOR	1
3	PAOZZ	PAOZZ		PAOZZ	97403 13206E1405	.KNOB CONTROL, CARBURETOR	1
4	PAOZZ	PAOZZ		PAOZZ	97403 13206E1409	.SPRING, CARBURETOR CONTROL	1
5	XAOZZ	XAOZZ		XAOZZ	97403 13206E1489	.PIN AND BOLT ASSEMBLY, CARBURETOR	1
6	PAOZZ	PAOZZ		PAOZZ	96906 MS15795-914	.WASHER, FLAT ROUND	1
7	PAOZZ	PAOZZ		PAOZZ	97403 13218E0320-51	NUT, MACHINE: CARBURETOR MTG, 1/4-28 THD SIZE	2
8	PAOZZ	PAOZZ		PAOZZ	96906 MS35335-33	WASHER, LOCK: EXTERNAL TOOTH, CARBURETOR MTG	2
9	PAOZZ	PAOZZ		PAOZZ	97403 9786E26-2	GASKET, CARBURETOR MTG (PART OF KITS, P/N 13214E8186 & 13214E8192)	1
10	KFOZZ	KFOZZ		KFOZZ	97403 9786E27	CARBURETOR (PART OF KIT, P/N 13214E8192)	1
11	PAOZZ	PAOZZ		PAOZZ	24617 137398	ELBOW, FUEL LINE TO CARBURETOR	1
12	PAOZZ	PAOZZ		PAOZZ	88044 AN125964	STUD, CARBURETOR MOUNTING (PART OF KIT, P/N 13214E8192)	2
13	XDOZZ	XDOZZ		XDOZZ	97403 9786E43-1	GASKET, CARBURETOR FLOAT BOWL (USED OF TILLOTSEN CARBURETOR MDL CM-4)	1
13	XDOZZ	XDOZZ		XDOZZ	97403 13215E3837	GASKET, CARBURETOR FLOAT BOWL (USED ON MARVEL SCHEBLER MOD 10-5057 AND 10-5057-1)	1
	PAOZZ	PAOZZ		PAOZZ	97403 13214E8192	KIT, CARBURETOR REPLACEMENT GASKET (2) 15-9 CARBURETOR (1) 15-10 STUD (2) 15-12	V
						END OF FIGURE	



TM 9-2805-256-24P  
TO 38G2-102-4  
SL-4-81283C

SECTION II

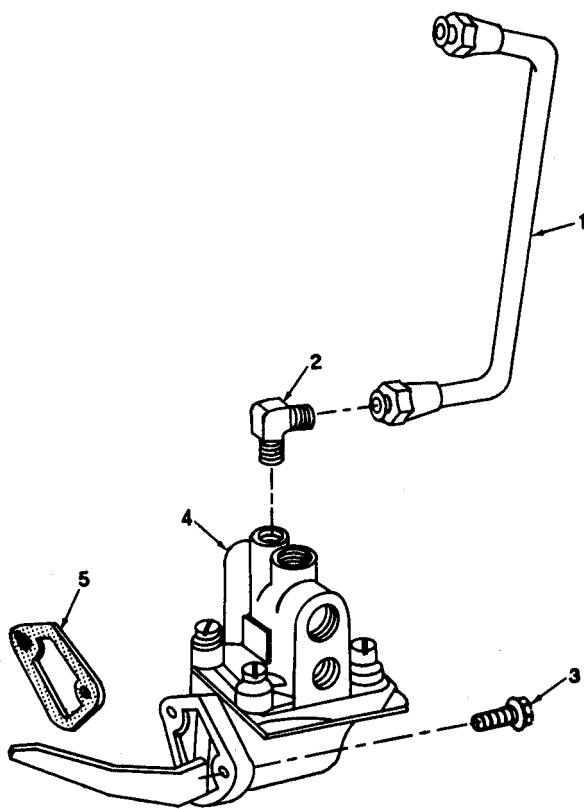


Figure 16. Fuel Line and Fuel Pump Assembly

(1)	(2)		(3)	(4)	(5)	(6)	(7)
ITEM NO.	SMR CODE		CAGEC	PART NUMBER	DESCRIPTION AND USABLE ON CODE	QTY	USMC QTY/ EQUIP
	a. ARMY	b. AIR FORCE					
					GROUP 12 FUEL LINE AND FUEL PUMP ASSEMBLY		
					FIG. 16 FUEL LINE AND FUEL PUMP ASSEMBLY		
1	PAOZZ	PAOZZ	PAOZZ	97403	13214E7061		
					LINE ASSEMBLY, FUEL: FUEL PUMP TO CARBURETOR	1	
2	PAOZZ	PAOZZ	PAOZZ	24617	137398		
					ELBOW, FUEL PUMP TO FUEL LINE	1	
3	PAOZZ	PAOZZ	PAOZZ	97403	13218E0504-68		
					SCREW, LOCKWASHER, ASSEMBLED: FUEL PUMP MTG	2	
4	PAOZZ	PAOZZ	PAOZZ	97403	13226E2230-2		
					PUMP ASSEMBLY, FUEL WITH PRIMER	1	
5	PAOZZ	PAOZZ	PAOZZ	97403	13206E0401		
					GASKET, FUEL PUMP MTG (PART OF KIT, P/N 13214E8186)	1	
					END OF FIGURE		

SECTION II

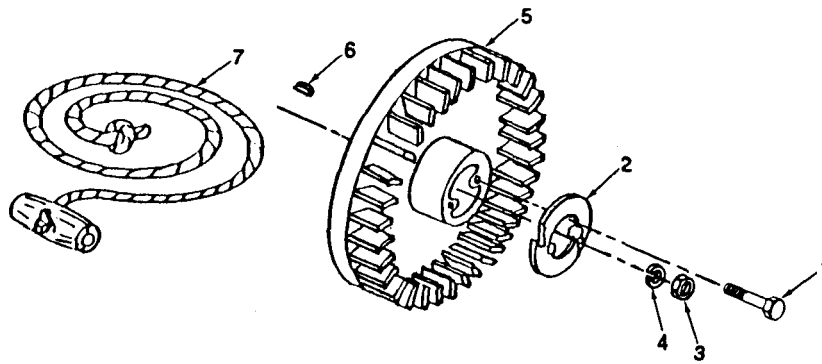


Figure 17. Flywheel Assembly

(1)	(2)		(3)	(4)	(5)	(6)	(7)
ITEM NO.	SMR CODE		CAGEC	PART NUMBER	DESCRIPTION AND USABLE ON CODE	QTY	USMC QTY/ EQUIP
	a. ARMY	b. AIR FORCE					
GROUP 13 FLYWHEEL ASSEMBLY							
FIG. 17 FLYWHEEL ASSEMBLY							
1	PAOZZ	PAOZZ	PAOZZ	97403	13218E0549-46	2	SCREW, ASSEMBLED WASHER: PULLEY FLANGE MTG
2	PAOZZ	PAOZZ	PAOZZ	97403	9786E119-1	1	FLANGE, ROPE PULLEY: ENGINE STARTING
3	PAFZZ	PAFZZ	PAFZZ	97403	13218E0320-75	1	NUT, MACHINE: FLYWHEEL MTG
4	PAFZZ	PAFZZ	PAFZZ	97403	13218E0519-42	1	WASHER, LOCK SPRING: FLYWHEEL MTG
5	PAFZZ	PAFZZ	PAFZZ	97403	9786E120	1	FLYWHEEL ASSEMBLY
6	PAFZZ	PAFZZ	PAFZZ	96906	MS35756-6	1	KEY, FLYWHEEL ALIGNMENT
7	PAOZZ	PAOZZ	PAOZZ	97403	9786E121	1	ROPE, STARTER CABLE ASSEMBLY
END OF FIGURE							

TM 9-2805-256-24P  
TO 38G2-102-4  
SL-4-81283C

SECTION II

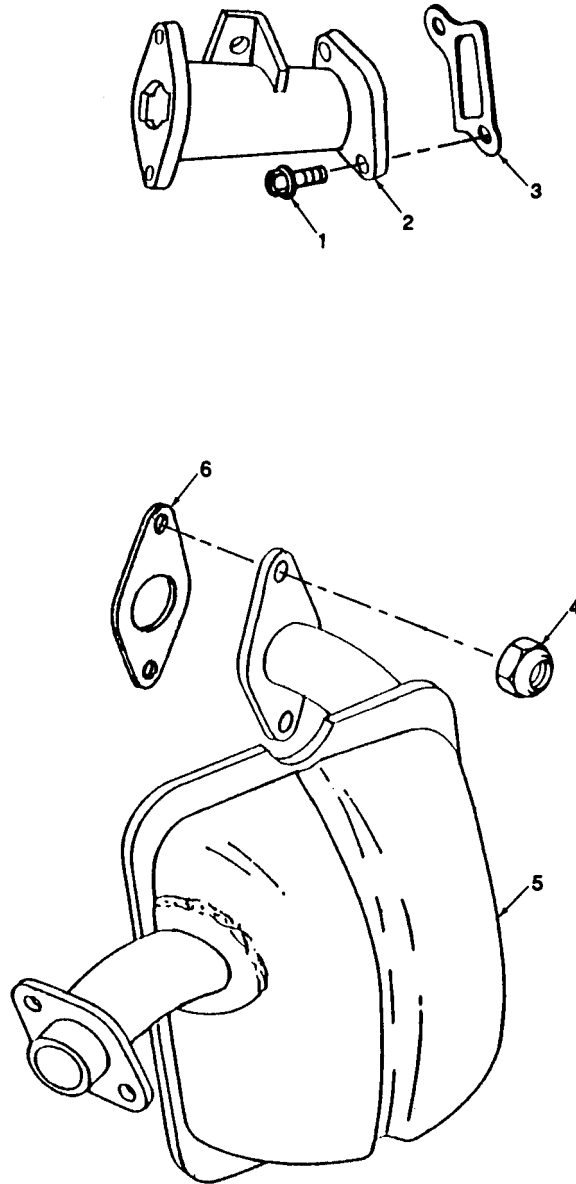


Figure 18. Manifolds

(1)	(2)		(3)	(4)	(5)	(6)	(7)
ITEM NO.	SMR CODE		CAGEC	PART NUMBER	DESCRIPTION AND USABLE ON CODE	QTY	USMC QTY/ EQUIP
	a. ARMY	b. AIR FORCE					
GROUP 14 MANIFOLDS							
FIG. 18 MANIFOLDS							
1	PAOZZ	PAOZZ	PAOZZ	97403	13218E0504-68		
					SCREW, LOCKWASHER, ASSEMBLIED: INTAKE MANIFOLD MTG, 1/4-20 THD SIZE 3/4 IN. LG	2	
2	PAOZZ	PAOZZ	PAOZZ	97403	9786E26-1		
					MANIFOLD INTAKE	1	
3	PAOZZ	PAOZZ	PAOZZ	97403	9786E26-4		
					GASKET, INTAKE MANIFOLD MOUNTING (PART OF KIT, P/N 13214E8186)	1	
4	PAOZZ	PAOZZ	PAOZZ	97403	9786E50-1		
					NUT, EXHAUST MOUNTING	2	
5	PAOZZ	PAOZZ	PAOZZ	97403	9786E52		
					MUFFLER, ENGINE EXHAUST	1	
6	PAOZZ	PAOZZ	PAOZZ	97403	9786E50-2		
					GASKET, MUFFLER MOUNTING (PART OF KIT, P/N 13214E8186)	1	
END OF FIGURE							

SECTION II

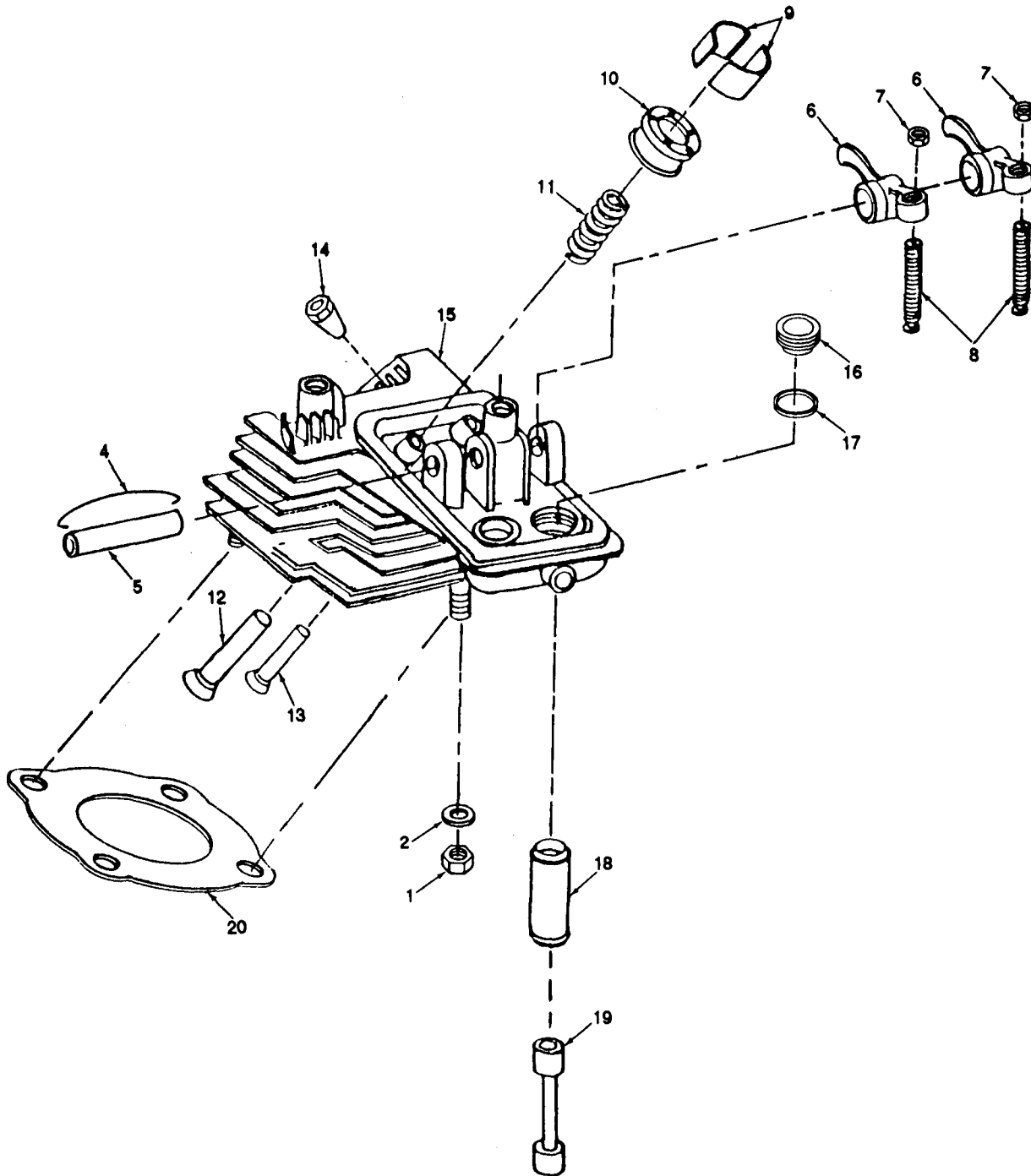


Figure 19. Cylinder Head Assembly

TM9-2805-256-24P  
 TO 38G2-102-4  
 SL-4-81283C  
 SECTION II

(1)	(2)		(3)	(4)	(5)	(6)	(7)
ITEM NO.	SMR CODE		c.	d.	PART NUMBER	DESCRIPTION AND USABLE ON CODE	USMC QTY/ EQUIP
	a.	b.					
	ARMY	AIR FORCE	NAVY	USMC	CAGEC		
GROUP 15 CYLINDER HEAD ASSEMBLY							
FIG. 19 CYLINDER HEAD ASSEMBLY AND COMPONENTS							
1	PAFZZ	PAFZZ		PAFZZ	96906	MS21045L5	NUT, SELF-LOCKING: CYLINDER HEAD MTG 4
2	PAFZZ	PAFZZ		PAFZZ	96906	MS20002-6	WASHER, FLAT: CYLINDER HEAD MTG 4
3	KFFZZ	KFFZZ		KFFZZ	97403	13215E4181	CYLINDER HEAD ASSEMBLY (PART OF KIT, P/N 13214E8199) 1
4	PAFZZ	PAFZZ		PAFZZ	97403	9786E98-1	.CLIP, ROCKET SHAFT (PART OF KIT, P/N 13214E8199) 1
5	PAFZZ	PAFZZ		PAFZZ	97403	9786E98-3	.SHAFT, ROCKER ARM (PART OF KIT, P/N 13214E8199) 1
6	PAFZZ	PAFZZ		PAFZZ	97403	9786E101-3	.ROCKER ARM PART OF KIT, P/N 13214E8199 2
7	PAFZZ	PAFZZ		PAFZZ	97403	13218E0320-32	.NUT, MACHINE ROCKER ARM ADJUSTING (PART OF KIT, P/N 13214E8199) 2
8	PAFZZ	PAFZZ		PAFZZ	97403	9786E101-2	.SCREW, VALVE ADJUSTING (PART OF KIT, P/N 13214E8199) 2
9	KFFZZ	KFFZZ		KFFZZ	97403	9786E100-2	.LOCK, RETAINER HALF (PARTS OF KITS, P/N 13214E8181, 13214E8188 & 13214E8199) 4
10	PAFZZ	PAFZZ		PAFZZ	97403	9786E102	.ROTOCAP ASSEMBLY (PART OF KIT, P/N 13214E8199) 2
11	PAFZZ	PAFZZ		PAFZZ	97403	9786E98-2	.SPRING, VALVE (PART OF KIT, P/N 13214E8199) 2
12	KFOZZ	KFOZZ		KFOZZ	97403	9786E100-1	.VALVE, EXHAUST (PART OF KITS, P/N 13214E8181 & 13214E8199) 1
13	KFFZZ	KFFZZ		KFOZZ	97403	13214E9382	.VALVE, INTAKE (PART OF KITS, P/N 13214E8188 & 13214E8199) 1
14	PAFZZ	PAFZZ		PAFZZ	97403	13218E0135-3	.CONNECTOR, BREATHER LINE (PART OF KIT, P/N 13214E8199) 1
15	XAFZZ	XAFZZ		XAFZZ	97403	13215E4180	.CYLINDER HEAD (PART OF KIT P/N 13214E8199) 1
16	PAFZZ	PAFZZ		PAFZZ	97403	9786E93-4	SCREW, PACKING, PUSH ROD HOUSING 2
17	PAFZZ	PAFZZ		PAFZZ	97403	9786E92-3	PACKING, PUSH ROD HOUSING (PART OF KIT, P/N 13214E8186) 4
18	PAFZZ	PAFZZ		PAFZZ	97403	9786E93-2	HOUSING, PUSH ROD 2



(1)	(2)		(3)	(4)	(5)	(6)	(7)		
ITEM NO.	SMR CODE		NAVY	USMC	CAGEC	PART NUMBER	DESCRIPTION AND USABLE ON CODE	QTY	USMC QTY/ EQUIP
	ARMY	AIR FORCE							
19	PAFZZ	PAFZZ		PAFZZ	97403	13206E0110	PUSH ROD ASSEMBLY	2	
20	PAFZZ	PAFZZ		PAFZZ	97403	9786E107-1	GASKET, CYLINDER HEAD (PART OF KIT, P/N 13214E8186)	1	
	PAFZZ	PAFZZ		PAFZZ	97403	13214E8181	KIT, EXHAUST VALVE LOCK (2) 19-9 VALVE (1) 19-12	V	
	PAFZZ	PAFZZ		PAFZZ	97403	13214E8188	KIT, INTAKE VALVE LOCK (2) 19-9 VALVE (1) 19-13	V	
	PAFZZ	PAFZZ		PAFZZ	97403	13214E8199	KIT, CYLINDER HEAD CYL. HEAD ASSY (1)19-3 CLIP (1) 19-4 SHAFT (1) 19-5 ROCKER ARM (2) 19-6 NUT (2) 19-7 SCREW (2) 19-8 LOCK (4) 19-9 ROTOCAP (2) 19-10 SPRING (2) 19-11 VALVE, EXHAUST (1) 19-12 VALVE, INTAKE (1) 19-13 CONNECTOR (1) 19-14 CYLINDER HEAD (1) 19-15	V	

END OF FIGURE

SECTION II

1  
2 THRU 9 | 10  
11 THRU 18

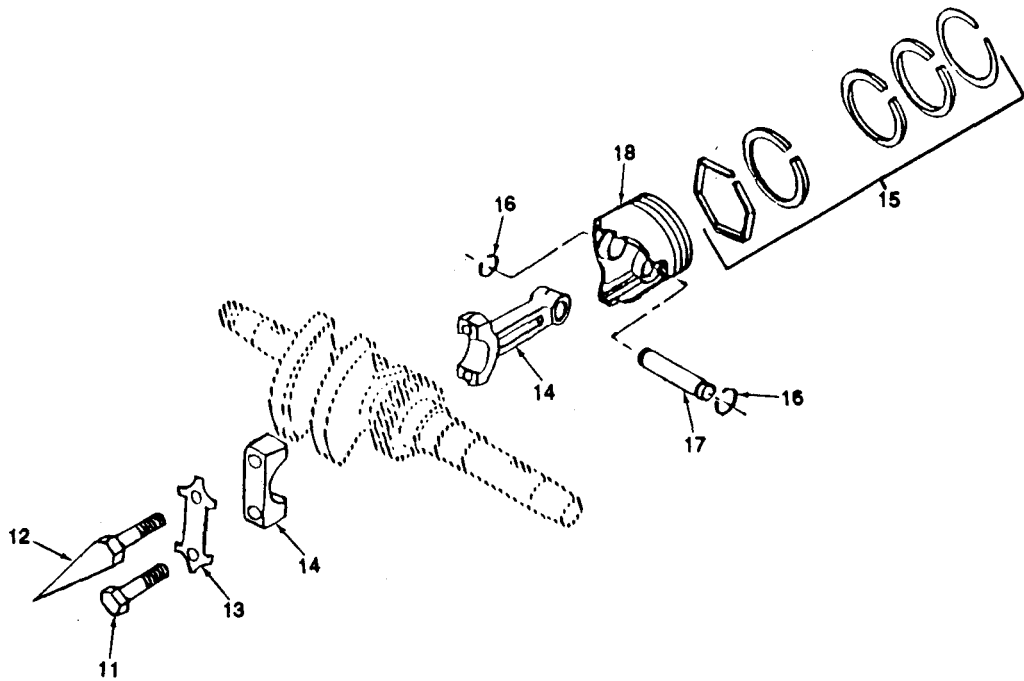
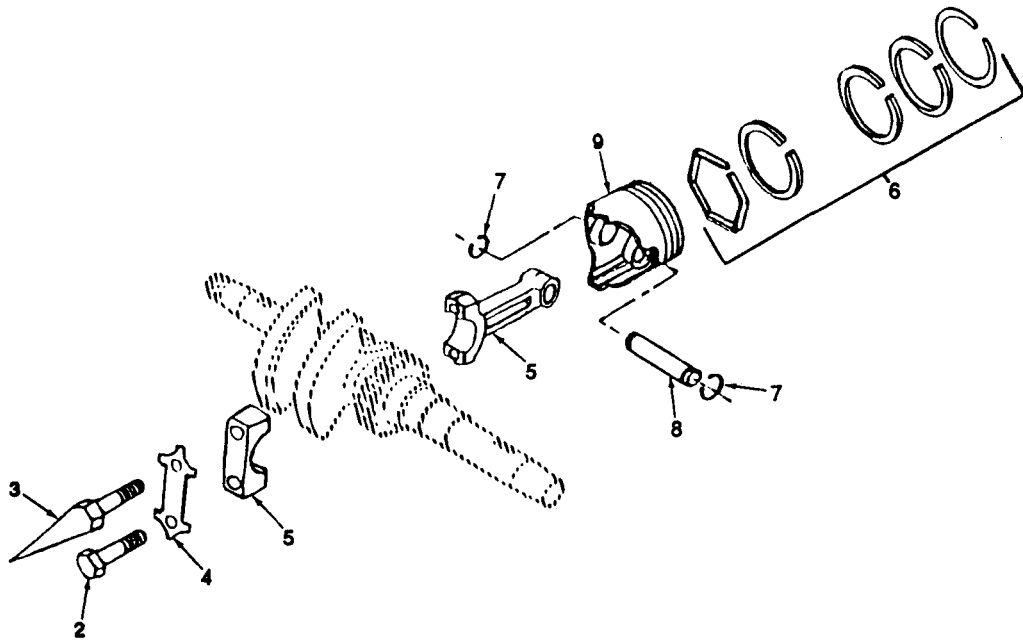


Figure 20. Piston and Connecting Rod Assembly

TM9-2805-256-24P  
 TO 38G2-102-4  
 SL-4-81283C  
 SECTION II

(1)	(2)		(3)	(4)	(5)	(6)	(7)
ITEM NO.	SMR CODE		c.	d.	PART NUMBER	DESCRIPTION AND USABLE ON CODE	USMC QTY/ EQUIP
	a.	b.					
						GROUP 16 PISTON AND CONNECTING ROD ASSEMBLY	
						FIG. 20 PISTON, CONNECTING ROD AND COMPONENTS	
1	KFFZZ	KFFZZ		KFFZZ	97403 13214E7064	PISTON AND CONNECTING ROD ASSEMBLY (PART OF KIT, P/N 13214E8191)	1
2	PAFZZ	PAFZZ		PAFZZ	97403 9786E113-3	.BOLT, CONNECTING ROD (PART OF KIT, P/N 13214E8191)	1
3	PAFZZ	PAFZZ		PAFZZ	97403 9786E113-1	.OIL DIPPER, CONNECTING ROD BOLT (PART OF KIT, P/N 13214E8191)	1
4	PAFZZ	PAFZZ		PAFZZ	97403 9786E113-2	.LOCKWASHER TAB (PART OF KIT, P/N 13214E8191)	1
5	PAFZZ	PAFZZ		PAFZZ	97403 9786E112	.CONNECTING ROD AND CAP (PART OF KIT, P/N 13214E8191)	1
6	PAFZZ	PAFZZ		PAFZZ	97403 13222E6723	.PISTON RINGS SET (PART OF KIT, P/N 13214E8191)	1
7	PAFZZ	PAFZZ		PAFZZ	96906 MS16624-3040	.RING, RETAINING, PISTON PIN (PART OF KIT, P/N 13214E8191)	2
8	KFFZZ	KFFZZ		KFFZZ	97403 9786E111-2	.PIN, PISTON, GROOVED (PART OF KIT, P/N 13214E8191)	1
9	KFFZZ	KFFZZ		KFFZZ	97403 13206E0102	.PISTON: 2 1/4 IN. DIA (PART OF KIT, P/N 13214E8191)	1
10	KFFZZ	KFFZZ		KFFZZ	97403 13226E8002	PISTON AND CONNECTING ROD ASSEMBLY: OPTIONAL (PART OF KIT, P/N 13214E8191)	1
11	KFFZZ	KFFZZ		KFFZZ	97403 13226E8003	.BOLT, CONNECTING ROD (PART OF KIT, P/N 13214E8191)	1
12	KFFZZ	KFFZZ		KFFZZ	97403 13226E8004	.OIL DIPPER, CONNECTING ROD BOLT (PART OF KIT, P/N 13214E8191)	1
13	PAFZZ	PAFZZ		PAFZZ	97403 9786E113-2	.LOCKWASHER TAB (PART OF KIT, P/N 13214E8191)	1
14	KFFZZ	KFFZZ		KFFZZ	97403 13226E8001	.CONNECTING ROD AND CAP (PART OF KIT, P/N 13214E8191)	1
15	PAFZZ	PAFZZ		PAFZZ	97403 13222E6723	.PISTON RINGS SET (PART OF KIT, P/N 13214E8191)	1
16	PAFZZ	PAFZZ		PAFZZ	96906 MS16624-3040	.RING, RETAINING, PISTON PIN (PART OF KIT, P/N 13214E8191)	2

TM9-2805-256-24P  
 TO 38G2-102-4  
 SL-4-81283C  
 SECTION II

(1)	(2)	(3)	(4)	(5)	(6)	(7)	
ITEM NO.	SMR CODE		c.	d.	PART NUMBER	DESCRIPTION AND USABLE ON CODE	USMC QTY/ EQUIP
	a.	b.					
ARMY	AIR FORCE	NAVY	USMC	CAGEC			
17	KFFZZ	KFFZZ	KFFZZ	97403	9786E111-2	.PIN, PISTON, GROOVED (PART OF KIT, P/N 13214E8191)	1
18	KFFZZ	KFFZZ	KFFZZ	97403	13206E0102	.PISTON: 2 1/4 IN. DIA (PART OF KIT P/N 13214E8191)	1
	PAFZZ	PAFZZ	PAFZZ	97409	13214E8191	KIT, PISTON AND CONNECTING ROD ASSEMBLY (1) 20-1 20-10 BOLT (1) 20-2 20-11 OIL DIPPER (1) 20-3 20-12 TAB (1) 20-4 20-13 ROD (1) 20-5 20-14 RING SET (1) 20-6 20-15 RING (2) 20-7 20-16 PIN (1) 20-8 20-17 PISTON (1) 20-9 20-18	V

END OF FIGURE

SECTION II

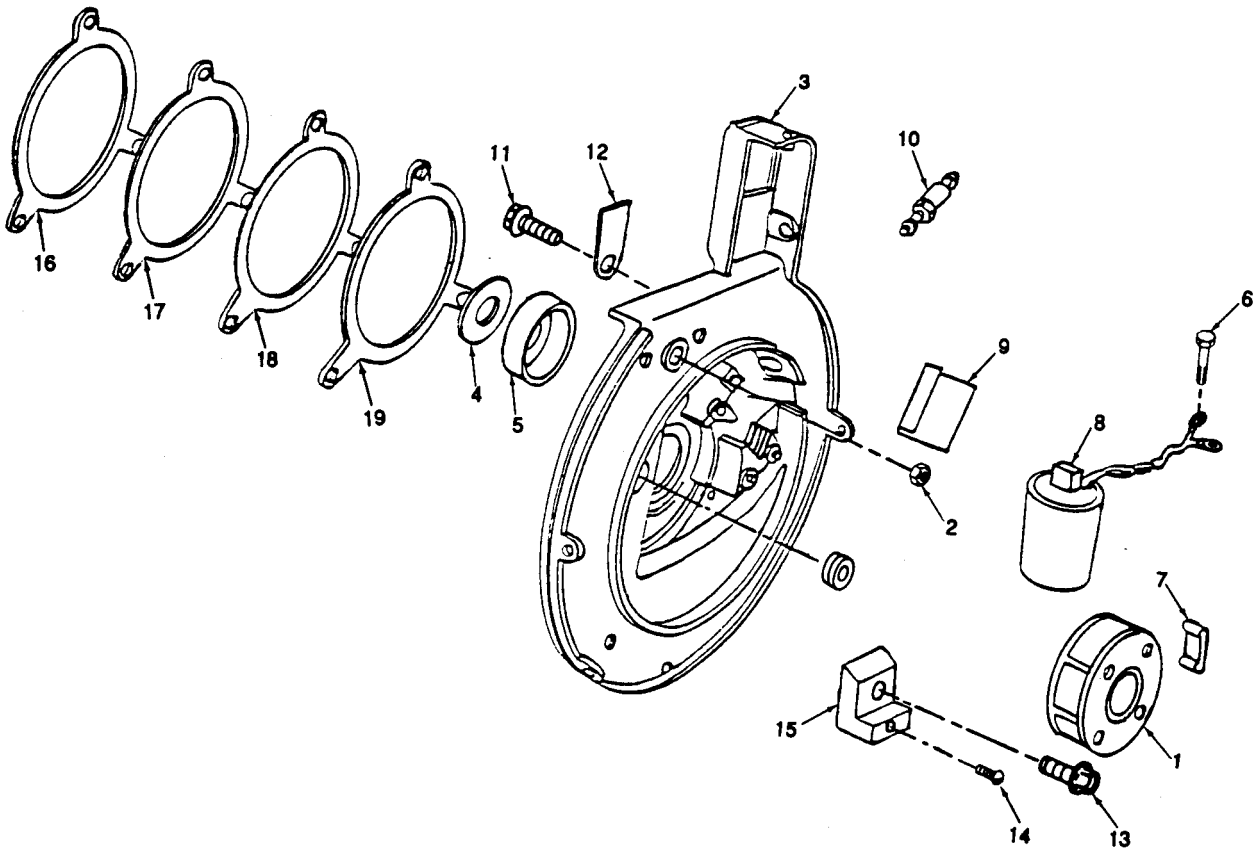


Figure 21. Bearing Cap Assembly and Components

(1)	(2)		(3)	(4)	(5)	(6)	(7)	
ITEM NO.	SMR CODE		c.	d.	PART NUMBER	DESCRIPTION AND USABLE ON CODE	USMC QTY/ EQUIP	
	a.	b.						
	ARMY	AIR FORCE	NAVY	USMC	CAGEC			
GROUP 17 BEARING CAP ASSEMBLY								
FIG. 21 BEARING CAP ASSEMBLY AND COMPONENTS								
1	PAFZZ	PAFZZ		PAFZZ	97403	9786E115	MAGNET, ROTATING UOC: A,B,C	1
1	PAFZZ	PAFZZ		PAFZZ	97403	13226E0939	MAGNET, ROTATING (PART OF KIT, P/N 13226E6175) UOC: D	1
2	PAFZZ	PAFZZ		PAFZZ	96906	MS21045L5	NUT, SELF-LOCKING: END COVER MTG	3
3	KFFZZ	KFFZZ		KFFZZ	97403	9786E123	BEARING CAP ASSEMBLY (PART OF KIT, P/N 13214E8215) UOC: D	1
4	XAHZZ	XAHZZ		XAHZZ	97403	13214E7049-1	.CUP, TAPERED ROLLER BEARING	1
5	KFFZZ	KFFZZ		KFFZZ	97403	13214E7063	.SEAL, OIL: CRANKSHAFT (PART OF KITS, P/N 13214E8205 & 13214E8215)	1
6	PAFZZ	PAFZZ		PAFZZ	97403	13218E0504-53	SCREW, ASSEMBLED LOCKWASHER: COIL WIRE CONNECT UOC: A,B,C	2
7	PAFZZ	PAFZZ		PAFZZ	97403	9786E129-3	CLAMP, COIL	2
8	PAFZZ	PAFZZ		PAFZZ	97403	9786E128	COIL ASSEMBLY, MAGNETO UOC: A,B,C	1
8	PAFZZ	PAFZZ		PAFZZ	97403	13226E0929	COIL (PART OF KIT, P/N 13226E6175) UOC: D	1
9	PAFZZ	PAFZZ		PAFZZ	97403	9786E129-1	INSULATOR, HIGH TENSION (PART OF KIT, P/N 13214E8215) UOC: A,B,C	1
9	PAFZZ	PAFZZ		PAFZZ	97403	13226E6179	INSULATOR COIL (PART OF KIT, P/N 13226E6175) UOC: D	1
10	PAFZZ	PAFZZ		PAFZZ	97403	13212E3763	NOISE FILTER ASSEMBLY UOC: A,B,C	1
11	PAOZZ	PAOZZ		PAOZZ	97403	13218E0504-53	SCREW, ASSEMBLED LOCKWASHER	1
12	XBOZZ	XBOZZ		XBOZZ	97403	9786E107-3	COVER, TIMING MARK	1
13	PAFZZ	PAFZZ		PAFZZ	97403	13218E0504-53	SCREW, ASSEMBLED WASHER: NO. 10-24 THD SIZE, 9/16 IN. LG UOC: A,B,C	1
14	PAFZZ	PAFZZ		PAFZZ	96906	MS24621-16	SCREW, SELF-TAPPING: NO. 6-20 THD SIZE, 5/16 IN. LG UOC: A,B,C	1

(1)	(2)		(3)	(4)	(5)	(6)	(7)		
ITEM NO.	SMR CODE		NAVY	USMC	CAGEC	PART NUMBER	DESCRIPTION AND USABLE ON CODE	QTY	USMC QTY/ EQUIP
	a. ARMY	b. AIR FORCE							
15	PBFZZ	PBFZZ		PBFZZ	97403	9786E129-2	BLOCK, DIELECTRIC CONNECTOR (PART OF KIT, P/N 13214E8215) UOC: A,B	1	
16	KFFZZ	KFFZZ		KFFZZ	97403	13214E9381-4	SHIM, BEARING CAP: .021, AS REQUIRED (PART OF KIT, P/N 13214E8215)	V	
17	KFFZZ	KFFZZ		KFFZZ	97403	13214E9381-2	SHIM, BEARING CAP: .005, AS REQUIRED (PART OF KIT, P/N 13214E8215)	V	
18	KFFZZ	KFFZZ		KFFZZ	97403	13214E9381-1	SHIM, BEARING CAP: .003, AS REQUIRED (PART OF KIT, P/N 13214E8215)	V	
19	KFFZZ	KFFZZ		KFFZZ	97403	13214E9381-3	SHIM, BEARING CAP: .010, AS REQUIRED (PART OF KIT, P/N 13214E8215)	V	
20	PAOZZ	PAOZZ		PAOZZ	97403	9787E40-2	GROMMET, END CAP UOC: A,B (PART OF KIT, P/N 13214E8215)	1	
	PAFZZ	PAFZZ		PAFZZ	97403	13226E6175	KIT, BREAKERLESS IGNITION UOC: A,B,C RIVET (4) 2-7 NAMEPLATE (1) 2-8 GROMMET (1) 2-11 CABLE (1) 3-1 ICU (1) 12-1 ENCLOSURE (1) 12-2 SCREW (4) 12-3 COVER (1) 12-4 SCREW (6) 12-5 WASHER (6) 12-6 CAP (2) 12-7 NUT (1) 12-8 O-RING (1) 12-9 TRANSFORMER (1) 12-10 MODULE (1) 12-11 CONNECTOR (1) 12-12 O-RING (1) 12-13 SCREW (1) 12-14 WASHER (2) 12-15 SCREW (1) 12-16 CABLE (1) 13-1 CLAMP (1) 13-2 MAGNET (1) 21-1 COIL (1) 21-8 INSULATOR (1) 21-9	V	

END OF FIGURE

TM 9-2805-256-24P  
TO 38G2-102-4  
SL-4-1283C

SECTION II

1  
2 THRU 4

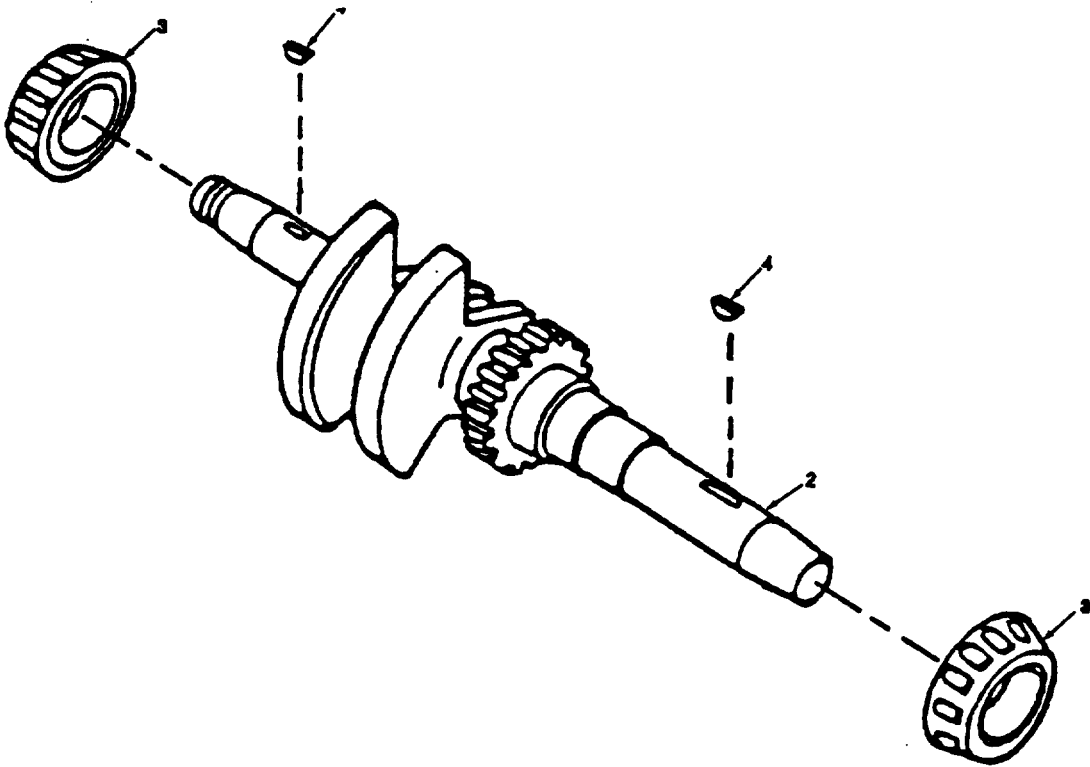


Figure 22. Crankshaft Assembly and Components



TM9-2805-256-24P  
 TO 38G2-102-4  
 SL-4-81283C  
 SECTION II

(1)	(2)		(3)	(4)	(5)	(6)	(7)
ITEM NO.	SMR CODE		c.	d.	PART CAGEC NUMBER	DESCRIPTION AND USABLE ON CODE	USMC QTY/ EQUIP
	a.	b.					
						GROUP 18 CRANKSHAFT ASSEMBLY	
						FIG. 22 CRANKSHAFT ASSEMBLY AND COMPONENTS	
1	PAFZZ	PAFZZ		PAFZZ	97403 9786E116	CRANKSHAFT ASSEMBLY	1
2	XAFZZ	XAFZZ		XAFZZ	97403 9786E118	.CRANKSHAFT	1
3	PAHZZ	PAHZZ		PAHZZ	97403 13214E7049-2	.BEARING, TAPERED ROLLER	2
4	PAFZZ	PAFZZ		PAFZZ	96906 MS35756-6	.KEY, WOODRUFF, ROTATING MAGNET	2
						END OF FIGURE	

SECTION II

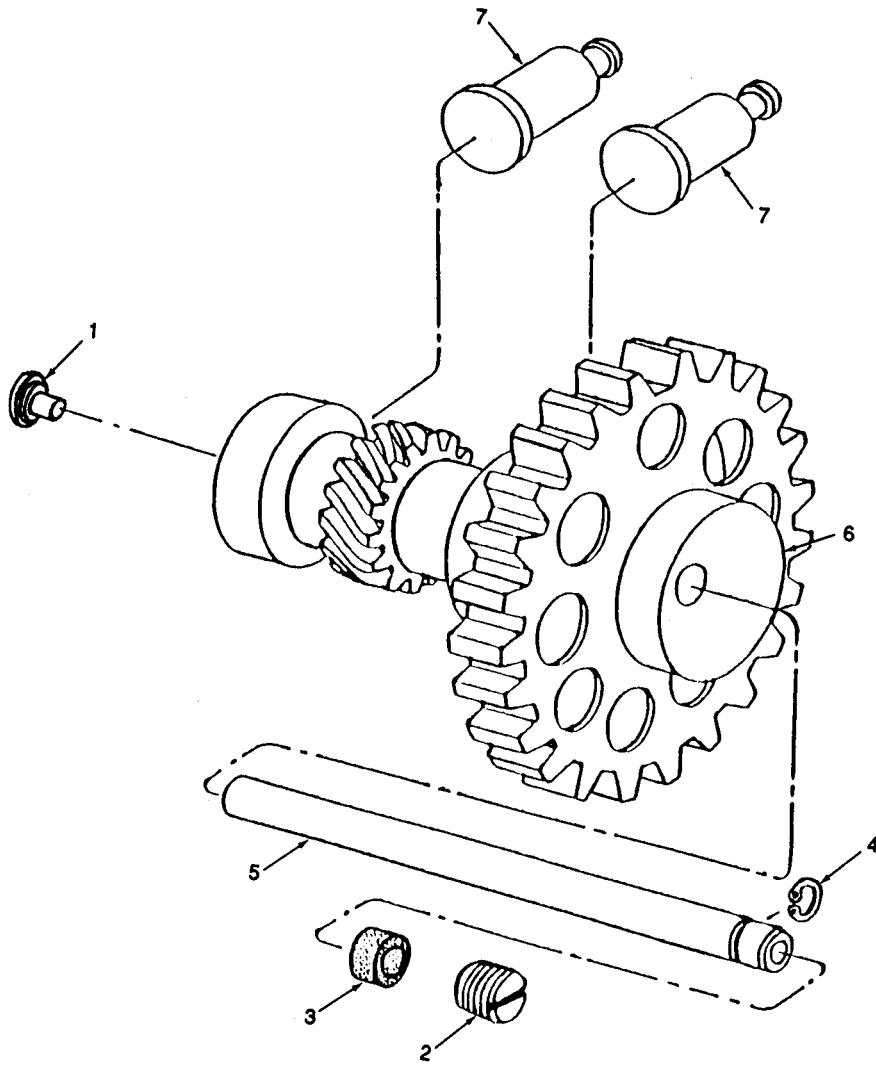


Figure 23. Camshaft and Components

(1)	(2)		(3)		(4)	(5)	(6)	(7)	
ITEM NO.	SMR CODE		c.	d.	CAGEC	PART NUMBER	DESCRIPTION AND USABLE ON CODE	QTY	USMC QTY/ EQUIP
	a.	b.							
	ARMY	AIR FORCE	NAVY	USMC					
GROUP 19 CAMSHAFT AND COMPONENTS									
FIG. 23 CAMSHAFT AND COMPONENTS									
1	PAHZZ	PAHZZ		PAHZZ	96906	MS9380-06	PLUG, EXPANSION: CAMSHAFT AXLE, 1/2 IN. DIA, 1/16 IN. THK	1	
2	PAHZZ	PAHZZ		PAHZZ	97403	13215E3831	SETSCREW, CAMSHAFT AXLE PLUG: 9/16-18 THD SIZE, 3/8 IN. LG	1	
3	PAHZZ	PAHZZ		PAHZZ	97403	13206E1459	SEAL, CAMSHAFT AXLE PLUG (PART OF KIT, P/N 13214E8186)	1	
4	PAHZZ	PAHZZ		PAHZZ	96906	MS16632-1037	RING, RETAINING (PART OF KIT, P/N 13214E8177)	1	
5	XAHZZ	XAHZZ		PAHZZ	97403	9786E93-1	AXLE, CAMSHAFT (PART OF KIT P/N 13214E8177)	1	
6	KFHZZ	KFHZZ		KFHZZ	97403	9786E95	CAMSHAFT, VALVE ACTUATING (PART OF KIT, P/N 13214E8177)	1	
7	PAHZZ	PAHZZ		PAHZZ	97403	9786E93-3	TAPPET VALVE	2	
	PAHZZ	PAHZZ		PAHZZ	97403	13214E8177	KIT, CAMSHAFT AND AXLE RING (1) 23-4 AXLE (1) 23-5 CAMSHAFT (1) 23-6	V	
END OF FIGURE									

TM 9-2805-256-24P  
TO 38G2-102-4  
SL-4-81283C

SECTION II

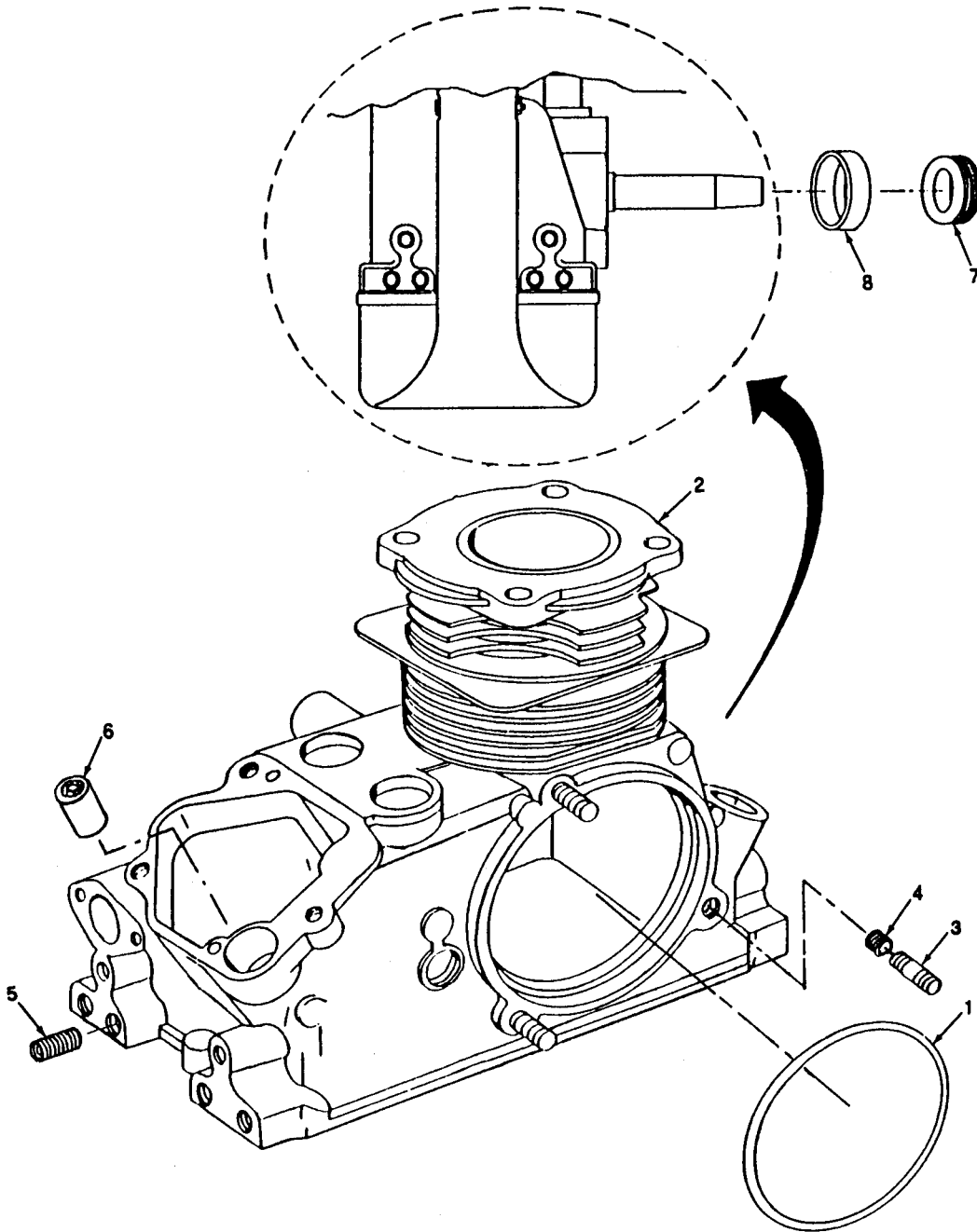


Figure 24. Crankcase Assembly and Components

TM9-2805-256-24P  
 TO 38G2-102-4  
 SL-4-81283C  
 SECTION II

(1)	(2)		(3)	(4)	(5)	(6)	(7)
ITEM NO.	SMR CODE		c.	d.	PART NUMBER	DESCRIPTION AND USABLE ON CODE	USMC QTY/ EQUIP
	a.	b.					
ARMY	AIR FORCE	NAVY	USMC	CAGEC			
GROUP 20 CRANKCASE ASSEMBLY							
FIG. 24 CRANKCASE ASSEMBLY AND COMPONENTS							
1	PAFZZ	PAFZZ	PAFZZ	96906	MS28775-237	PACKING, PREFORMED: BEARING CAP MTG (PART OF KITS, P/N 13214E8215 & 13214E8186)	1
2	PBHZZ	PBHZZ	PBHZZ	97403	9786E10	CRANKCASE ASSEMBLY	1
3	PAFZZ	PAFZZ	PAFZZ	97403	9786E16-3	.STUD, SELF-TAPPING, BEARING CAP MTG: 5/8-18 THD SIZE, 1 11/32 IN. LG	3
4	PAFZZ	PAFZZ	PAFZZ	96906	MS35914-112	.INSERT, SCREW THREAD: 5/16-24 THD SIZE	4
5	PAFZZ	PAFZZ	PAFZZ	96906	MS35914-109	.INSERT, SCREW THREAD: 1/4-20 THD SIZE	12
6	PAHZZ	PAHZZ	PAHZZ	96906	MS17131-5	.BEARING, NEEDLE	1
7	KFFZZ	KFFZZ	KFFZZ	97403	13214E7063	.SEAL, OIL: CRANKSHAFT (PART OF KIT, P/N 13214E8205)	1
8	XAHZZ	XAHZZ	XAHZZ	97403	13214E7049-1	.CUP, TAPERED BEARING CRANKSHAFT	1
	PAFZZ	PAFZZ	PAFZZ	97403	13214E8215	KIT, BEARING CAP BEARING CAP (1) 21-3 INSULATOR (1) 21-9 BLOCK (1) 21-15 SHIM (1) 21-16 SHIM (2) 21-17 SHIM (2) 21-18 SHIM (2) 21-19 GROMMET (1) 21-20 PACKING (1) 24-1	V
	PAOZZ	PAOZZ	PAOZZ	97403	13214E8186	KIT, ENGINE, GASKET, OVERHAUL GASKET (2) 4-13 GASKET (2) 5-6 GASKET (1) 7-5 GASKET (1) 8-4 GASKET (1) 8-13 GASKET (1) 8-15 GASKET (1) 11-2 GASKET (1) 11-15 GASKET (2) 15-9 GASKET (1) 16-5 GASKET (2) 18-3 GASKET (3) 18-6 PACKING (8) 19-17 GASKET (2) 19-20 SEAL (1) 23-3 PACKING (1) 24-1	V

TM9-2805-256-24P  
 TO 38G2-102-4  
 SL-4-81283C  
 SECTION II

(1)	(2)				(3)	(4)	(5)	(6)	(7)
ITEM NO.	SMR CODE				CAGEC	PART NUMBER	DESCRIPTION AND USABLE ON CODE	QTY	USMC QTY/ EQUIP
	a.	b.	c.	d.					
	ARMY	AIR FORCE	NAVY	USMC	97403	13214E8205	KIT, OIL SEAL UOC: A,B,C SEAL, OIL (2) 21-5 SEAL, OIL (2) 24-7	V	

CROSS-REFERENCE INDEXES

NATIONAL STOCK NUMBER INDEX

STOCK NUMBER	FIG.	ITEM	STOCK NUMBER	FIG.	ITEM
2805-00-010-0190	9	13	5305-00-363-3976	4	3
	10	19		4	7
4730-00-013-7398	14	2		12	16
	15	11	5305-00-363-3984	11	9
	16	2	5305-00-363-3988	2	5
2805-00-014-1697	2	6		21	6
5340-00-014-6979	9	8		21	11
	10	22		21	13
5310-00-017-8919	18	4	5305-00-363-3991	8	8
5305-00-017-9085	4	8	5310-00-363-3992	19	7
	16	3	5310-00-363-3993	2	12
	18	1		11	3
5310-00-045-5214	15	6	5310-00-363-3996	2	13
5340-00-050-1511	23	1	5305-00-366-7763	15	1
5305-00-053-1117	21	14	5305-00-366-7766	2	24
2910-00-064-5638	15	2	5305-00-368-8223	5	1
2805-00-067-8084	2	4	5305-00-410-1910	2	23
2805-00-067-8112	2	3	2805-00-420-7246	19	
2805-00-067-8126	8	3	5305-00-427-0034	12	14
2805-00-067-8260	8	14	2940-00-435-7242	4	9
4730-00-071-7890	4	1	5340-00-439-8116	20	4
5330-00-087-3612	1	2		20	13
3110-00-100-3698	22	3	6680-00-445-2882	6	1
5330-00-103-8793	11	2	5360-00-445-2921	19	11
2920-00-103-8812	11	1	2920-00-445-2925	2	15
2910-00-104-4489	8	11	5970-00-445-2972	21	9
2805-00-105-0168	2	26	5305-00-455-4893	19	8
5355-00-106-1804	15	3	2805-00-455-4914	9	21
9905-00-110-3473	2	8	5305-00-455-8666	2	2
5330-00-114-2036	5	2	2805-00-455-9190	2	25
2990-00-126-8016	9	5	2805-00-457-8284	21	12
	10	5	2805-00-476-6496	17	2
5310-00-149-9130	19	2	3040-00-486-8125	8	12
6685-00-179-8632	4	11	4730-00-503-0460	14	5
3110-00-183-6715	24	6		19	14
4730-00-196-1479	1	3	2805-00-522-7386	19	10
5310-00-209-0786	2	22	5315-00-527-0604	9	19
	15	8	5310-00-543-5933	2	13
2920-00-225-4841	11			11	4
2940-00-225-4842	4	10	5330-00-551-8441	12	9
5305-00-227-1543	8	1	5940-00-557-1629	2	19
5315-00-234-7465	9	15	6145-00-570-0516	2	18
	10	8	2805-00-575-3493	22	1
2805-00-252-2012	19		2805-00-575-3503	23	
4730-00-278-3462	5	4	2805-00-575-3505	19	
5365-00-282-1633	9	16	5310-00-579-0079	12	6
	10	15	5330-00-580-5939	9	7
5305-00-291-8680	2	14		10	7
	7	3	5330-00-584-1840	12	13
	11	6	5310-00-584-5272	17	4
5340-00-332-1304	9	22	5365-00-584-6620	23	4
	10	10	5330-00-608-6432	24	1
5305-00-363-3976	2	1	5315-00-616-4261	9	6

**TM 9-2805-256-24P  
TO 38G2-102-4  
SL-4-81283C**

**SECTION IV**

STOCK NUMBER	FIG.	ITEM	STOCK NUMBER	FIG.	ITEM
5315-00-616-4261	10	6	4710-00-832-5675	14	1
5315-00-616-5514	17	6	2805-00-832-5677	24	
	22	4	2805-00-832-8021	24	
5307-00-637-6755	15	12	5330-00-840-6269	6	2
5930-00-655-1514	2	20	5320-00-850-2273	2	7
5365-00-720-8064	9	11	5310-00-857-5559	19	1
5330-00-756-1673	16	5	5310-00-857-5559	21	2
2990-00-757-9766	18	5	2805-00-865-6322	7	4
2805-00-767-6009	17	5	2805-00-865-6325	18	2
5340-00-773-6219	9	1	2805-00-867-8726	23	6
	10	1	2805-00-867-8729	16	1
2805-00-788-0423	20	5	2910-00-867-8730	4	4
2805-00-788-0425	19	19	2805-00-867-8736	5	3
2920-00-788-0431	11	13	5360-00-867-8788	15	4
2920-00-788-0432	21	10	2920-00-867-8794	3	1
2990-00-788-0433	9	14	2910-00-905-9792	1	1
4730-00-788-0441	7	1	2910-00-917-4735	15	
5310-00-788-0443	17	3	2805-00-927-3912	5	6
2805-00-788-1527	20	3	2805-00-929-3472	8	
3040-00-795-9581	19	5	5310-00-934-9739	9	10
5995-00-795-9586	2	16		10	20
	11	8	2805-00-937-0949	20	
5330-00-797-3506	18	6	2805-00-953-1563	4	
5330-00-797-3510	19	17	5305-00-956-4470	12	3
5330-00-797-3513	11	15	5310-00-971-7989	2	21
5330-00-797-3514	7	5		15	7
5360-00-797-3517	9	4	2990-00-972-7950	17	7
5305-00-797-3535	23	2	5305-00-974-3781	8	10
2805-00-797-3536	24	3	2805-00-976-9154	20	9
5995-00-797-4619	11	5	5330-00-977-7933	7	2
4730-00-797-4634	19	16	5305-00-984-4984	12	5
2805-00-797-4636			5340-00-994-1632	24	5
	23	7	2805-01-093-2392	20	6
2805-00-797-4638	19	18		20	15
5330-00-797-4639	23	3	2920-01-131-8253	21	8
5340-00-797-4641	21	7	2920-01-133-6312	21	1
5330-00-797-4642	5	7	5310-01-137-5497	12	8
5306-00-797-5884	20	2	6120-01-137-5498	12	10
2990-00-797-5886	9	20	2920-01-137-6822	12	11
2990-00-797-5887	9	18	2805-01-142-0987	24	2
2805-00-797-5894	21	1	9905-01-146-5263	2	27
2920-00-797-5897	21	8	2910-01-173-2124	16	4
5330-00-797-5905	8	15	2920-01-360-4978	21	
5330-00-797-5907	8	4	2990-01-180-7614	21	9
5340-00-797-5964	19	4	6150-01-182-1978	13	1
5330-00-799-5586	18	3	2920-01-182-4316	12	1
4820-00-799-5589	5	5	5305-01-184-6181	17	1
5310-00-807-1469	9	3	2805-01-203-4361	19	6
	10	3	5325-01-203-4923	2	11
5340-00-809-1490	13	2		21	20
2920-00-810-7082	3	2	3110-01-206-6608	9	32
5940-00-813-0698	2	17		10	27
5325-00-816-1183	2	11	5305-01-207-8288	11	14
5330-00-819-8733	4	5	2990-01-237-0619	10	14
	15	9	2990-01-237-0620	10	18
5330-00-819-8734	19	20	5330-01-237-3715	21	5
5315-00-821-1225	9	28		24	7
5315-00-821-1225	10	28	2990-01-238-3807	10	9
2805-00-832-5672		24	6150-01-238-4218	12	12
2990-00-832-5674		9	5310-01-239-8859	12	15



**TM 9-2805-256-24P  
TO 38G2-102-4  
SL-4-81283C**

SECTION IV

STOCK NUMBER	FIG.	ITEM
2990-01-239-8987	10	17
5360-01-240-2053	10	4
2920-01-240-6785	12	4
2590-01-245-0285	6	4
2805-01-246-9255	10	2
5310-01-333-2847	14	3
2920-01-360-9571	3	1

CROSS-REFERENCE INDEXES

CAGEC	PART NUMBER	PART NUMBER INDEX STOCK NUMBER	FIG.	ITEM
88044	AN125964	5307-00-637-6755	15	12
81349	M3486-1-2	6145-00-570-0516	2	18
81349	MIL-C-5501/7		12	7
96906	MS15795-914	5310-00-045-5214	15	6
96906	MS16535-152	5320-00-850-2273	2	7
96906	MS16555-329	5315-00-821-1225	9	28
96906	MS16555-329	5315-00-821-1225	10	28
96906	MS16562-28	5315-00-616-4261	9	6
96906	MS16562-28	5815-00-616-4261	10	6
96906	MS16562-40	5315-00-527-0604	9	19
96906	MS16624-1025	5365-00-720-8064	9	11
96906	MS16624-3025		9	31
96906	MS16624-3025		10	26
96906	MS16624-3040		20	7
96906	MS16624-3040		20	16
96906	MS16625-3062		9	29
96906	MS16625-3062		10	24
96906	MS16632-1037	5365-00-584-6620	23	4
96906	MS16633-1018	5365-00-282-1633	9	16
96906	MS16633-1018	5365-00-282-1633	10	15
96906	MS17131-5	3110-00-183-6715	24	6
96906	MS171525	5315-00-234-7465	9	15
96906	MS171525	5315-00-234-7465	10	8
96906	MS20002-6	5310-00-149-9130	19	2
96906	MS21042-5	5310-00-807-1469	9	3
96906	MS21042-5	5310-00-807-1469	10	3
96906	MS21045L5	5310-00-857-5559	19	1
96906	MS21045L5	5310-00-857-5559	21	2
96906	MS21333-98	5340-00-809-1490	13	2
96906	MS24621-16	5305-00-053-1117	21	14
96906	MS25036-101	5940-00-813-0698	2	17
96906	MS25036-149	5940-00-557-1629	2	19
96906	MS27769D2	4730-00-278-3462	5	4
96906	MS28775-014	5330-00-584-1840	12	13
96906	MS28775-019	5330-00-551-8441	12	9
96906	MS28775-237	5330-00-608-6432	24	1
96906	MS29561-009	5330-00-580-5939	9	7
96906	MS29561-009	5330-00-580-5939	10	7
96906	MS29561-019	5330-00-840-6269	6	2
96906	MS3212-25	5305-00-956-4470	12	3
96906	MS35058-22	5930-00-655-1514	2	20
96906	MS35206-227	5305-00-984-4984	12	5
96906	MS35333-37	5310-00-579-0079	12	6
96906	MS35333-73	5310-00-543-5933	2	13
96906	MS35333-73	5310-00-543-5933	11	4
96906	MS35335-33	5310-00-209-0786	2	22
96906	MS35335-33	5310-00-209-0786	15	8
96906	MS35469-242	5310-00-934-9739	9	10
96906	MS35469-242	5310-00-934-9739	10	20
96906	MS35756-6	5315-00-616-5514	17	6
96906	MS35756-6	5315-00-616-5514	22	4
96906	MS35914-112		24	4
96906	MS35914-109	5340-00-994-1632	24	5
96906	MS51009-1	2920-00-810-7082	3	2
96906	MS51086-1	2910-00-905-9792	1	1

SECTION IV

CAGEC	PART NUMBER	STOCK NUMBER	FIG.	ITEM
96906	MS51091-4	5330-00-087-3612	1	2
96906	MS9380-06	5340-00-050-1511	23	1
80205	NAS1598-3Y		11	7
97403	13206E0102	2805-00-976-9154	20	9
97403	13206E0102		20	18
97403	13206E0110	2805-00-788-0425	19	19
97403	13206E0401	5330-00-756-1673	16	5
97403	13206E0434	5330-00-103-8793	11	2
97403	13206E0444-5	5310-01-239-8859	12	15
97403	13206E0820	6685-00-179-8632	4	11
97403	13206E1400	2920-00-103-8812	11	1
97403	13206E1405	5355-00-106-1804	15	3
97403	13206E1409	5360-00-867-8788	15	4
97403	13206E1413	5305-00-366-7763	15	1
97403	13206E1430	2910-00-064-5638	15	2
97403	13206E1442	3110-01-206-6608	9	32
97403	13206E1442	3110-01-206-6608	10	27
97403	13206E1459	5330-00-797-4639	23	3
97403	13206E1489		15	5
97403	13211E8449	2940-00-225-4842	4	10
97403	13212E3762-2		11	11
97403	13212E3763	2920-00-788-0432	21	10
97403	13214E7049-1		21	4
97403	13214E7049-1		24	8
97403	13214E7049-2	3110-00-100-3698	22	3
97403	13214E7052	2910-00-867-8730	4	4
97403	13214E7056		9	2
97403	13214E7057	2920-00-788-0431	11	13
97403	13214E7058	4710-00-832-5675	14	1
97403	13214E7061	2805-00-867-8729	16	1
97403	13214E7063	5330-01-237-3715	21	5
97403	13214E7063	5330-01-237-3715	24	7
97403	13214E7064		20	1
97403	13214E7067	3040-00-486-8125	8	12
97403	13214E8177	2805-00-575-3503	23	
97403	13214E8180	2920-00-225-4841	11	
97403	13214E8181	2805-00-575-3505	19	
97403	13214E8186	2805-00-832-5672	24	
97403	13214E8187	2805-00-953-1563	4	
97403	13214E8188	2805-00-420-7246	19	
97403	13214E8189	2805-00-929-3472	8	
97403	13214E8191	2805-00-937-0949	20	
97403	13214E8192	2910-00-917-4735	15	
97403	13214E8199	2805-00-252-2012	19	
97403	13214E8205	2805-00-832-5677	24	
97403	13214E8215	2805-00-832-8021	24	
97403	13214E8217	2990-00-832-5674	9	
97403	13214E9381-1		21	18
97403	13214E9381-2		21	17
97403	13214E9381-3		21	19
97403	13214E9381-4		21	16
97403	13214E9382		19	13
97403	13214E9385	5340-00-332-1304	9	22
97403	13214E9385	5340-00-332-1304	10	10
97403	13214E9389-1		4	6
97403	13214E9389-4		4	2
97403	13214E9389-5		4	2
97403	13214E9570	4730-00-788-0441	7	1
97403	13215E3815	5995-00-797-4619	11	5
97403	13215E3827	2940-00-435-7242	4	9

SECTION IV

CAGEC	PART NUMBER	STOCK NUMBER	FIG.	ITEM
97403	13215E3831	5305-00-797-3535	23	2
97403	13215E3832	5305-00-363-3991	8	8
97403	13215E3835		8	5
97403	13215E3836		8	6
97403	13215E3837		15	13
97403	13215E3857-10	5330-00-114-2036	5	2
97403	13215E3857-14	5330-00-977-7933	7	2
97403	13215E3857-6		8	2
97403	13215E4156		2	9
97403	13215E4157		2	10
97403	13215E4180		19	15
97403	13215E4181		19	3
97403	13218E0135-3	4730-00-503-0460	14	5
97403	13218E0135-3	4730-00-503-0460	19	14
97403	13218E0250-43	4730-00-071-7890	4	1
97403	13218E0320-249	5310-00-363-3993	2	12
97403	13218E0320-249	5310-00-363-3993	11	3
97403	13218E0320-32	5310-00-363-3992	19	7
97403	13218E0320-51	5310-00-971-7989	2	21
97403	13218E0320-51	5310-00-971-7989	15	7
97403	13218E0320-75	5310-00-788-0443	17	3
97403	13218E0504-13	5305-00-974-3781	8	10
97403	13218E0504-32	5305-00-363-3984	11	9
97403	13218E0504-53	5305-00-363-3988	2	5
97403	13218E0504-53	5305-00-363-3988	21	6
97403	13218E0504-53	5305-00-363-3988	21	11
97403	13218E0504-53	5305-00-363-3988	21	13
97403	13218E0504-56	5305-00-291-8680	2	14
97403	13218E0504-56	5305-00-291-8680	7	3
97403	13218E0504-56	5305-00-291-8680	11	6
97403	13218E0504-59	5305-01-207-8288	11	14
97403	13218E0504-67	5305-00-363-3976	2	1
97403	13218E0504-67	5305-00-363-3976	4	3
97403	13218E0504-67	5305-00-363-3976	4	7
97403	13218E0504-67	5305-00-363-3976	12	16
97403	13218E0504-68	5305-00-017-9085	4	8
97403	13218E0504-68	5305-00-017-9085	16	3
97403	13218E0504-68	5305-00-017-9085	18	1
97403	13218E0504-70	5305-00-427-0034	12	14
97403	13218E0505-56	5305-00-455-8666	2	2
97403	13218E0519-3		8	9
97403	13218E0519-32		9	9
97403	13218E0519-32		10	21
97403	13218E0519-42	5310-00-584-5272	17	4
97403	13218E0526-109	5305-00-368-8223	5	1
97403	13218E0526-24	5305-00-227-1543	8	1
97403	13218E0526-286	5305-00-410-1910	2	23
97403	13218E0549-34	5305-00-366-7766	2	24
97403	13218E0549-46	5305-01-184-6181	17	1
97403	13222E6723	2805-01-093-2392	20	6
97403	13222E6723	2805-01-093-2392	20	15
97403	13226E0929	2920-01-131-8253	21	8
97403	13226E0939	2920-01-133-6312	21	1
97403	13226E1594	5325-00-816-1183	2	11
97403	13226E1613	5310-01-137-5497	12	8
97403	13226E1632-2	6120-01-137-5498	12	10
97403	13226E1633	2920-01-137-6822	12	11
97403	13226E1647		9	30
97403	13226E1647		10	25
97403	13226E1648		9	27

**TM 9-2805-256-24P  
TO 38G2-102-4  
SL-4-81283C**

**SECTION IV**

CAGEC	PART NUMBER	STOCK NUMBER	FIG.	ITEM
97403	13226E1648		10	29
97403	13226E1650		9	26
97403	13226E1650		10	23
97403	13226E1651		12	2
97403	13226E1653	6150-01-238-4218	12	12
97403	13226E1654	2920-01-240-6785	12	4
97403	13226E1655	2920-01-182-4316	12	1
97403	13226E1658	6150-01-182-1978	13	1
97403	13226E2228	9905-01-146-5263	2	27
97403	13226E2230-2	2910-01-173-2124	16	4
97403	13226E6175	2920-01-178-4978	21	
97403	13226E6175		11	1
97403	13226E6179	2990-01-180-7614	21	9
97403	13226E8001		20	14
97403	13226E8002		20	10
97403	13226E8003		20	11
97403	13226E8004		20	12
97403	13226E8006	2990-01-239-8987	10	17
97403	13226E8007	5360-01-240-2053	10	4
97403	13226E8008	2990-01-238-3807	10	9
97403	13226E8009		10	12
97403	13226E8011	2990-01-237-0619	10	14
97403	13226E8014		10	13
97403	13226E8015	2990-01-237-0620	10	18
97403	13227E9685	2805-01-246-9255	10	2
97403	13227E9891-3	2920-01-360-9571	3	1
97403	13227E98914	2920-00-867-8794	3	1
24617	137398	4730-00-013-7398	14	2
24617	137398	4730-00-013-7398	15	11
24617	137398	4730-00-013-7398	16	2
44940	505-0104	4730-00-196-1479	1	3
97403	9786E10	2805-01-142-0987	24	2
97403	9786E101		19	12
97403	9786E10-2		19	9
97403	9786E101-2	5305-00-455-4893	19	8
97403	9786E101-3	2805-01-203-4361	19	6
97403	9786E102	2805-00-522-7386	19	10
97403	9786E 107-1	5330-00-819-8734	19	20
97403	9786E107-3	2805-00-457-8284	21	12
97403	9786E111-2		20	8
97403	9786E 111-2		20	17
97403	9786E 112	2805-00-788-0423	20	5
97403	9786E1131	2805-00-788-1527	20	3
97403	9786E113-2	5340-00-439-8116	20	4
97403	9786E113-2	5340-00-439-8116	20	13
97403	9786E113-	5306-00-797-5884	20	2
97403	9786E114	6680-00-445-2882	6	1
97403	9786E 114-2		6	3
97403	9786E115	2805-00-797-5894	21	1
97403	9786E116	2905-00-575-3493	22	1
97403	9786E118		22	2
97403	9786E1191	2805-00-476-6496	17	2
97403	9786E120	2805-00-767-6009	17	5
97403	9786E121	2990-00-972-7950	17	7
97403	9786E123		21	3
97403	9786E128	2920-00-797-5897	21	8
97403	9786E1291	5970-00-445-2972	21	9
97403	9786E1292		21	15
97403	9786E1293	5340-00-797-4641	21	7
97403	9786E163	2806-00-797-3536	24	3

SECTION IV

CAGEC	PART NUMBER	STOCK NUMBER	FIG.	ITEM
97403	9786E17A-1	2590-01-245-0285	6	4
97403	9786E26-1	2805-00-865-6325	18	2
97403	9786E26-2	5330-00-819-8733	4	5
97403	9786E26-2	5330-00-819-8733	15	9
97403	9786E26-4	5330-00-799-5586	18	3
97403	9786E27		15	10
97403	9786E43-1		15	13
97403	9786E44	2805-00-867-8736	5	3
97403	9786E44-2	5330-00-797-4642	5	7
97403	9786E45	2805-00-927-3912	5	6
97403	9786E46	4820-00-799-5589	5	5
97403	9786E47A	2920-00-445-2925	2	15
97403	9786E50-1	5310-00-017-8919	18	4
97403	9786E50-2	5330-00-797-3506	18	6
97403	9786E52	2990-00-757-9766	18	5
97403	9786E53	2805-00-014-1697	2	6
97403	9786E53-1	9905-00-110-3473	2	8
97403	9786E55	2805-00-067-8084	2	4
97403	9786E56	2805-00-067-8112	2	3
97403	9786E57	2805-00-455-9190	2	25
97403	9786E60-2	5310-01-333-2847	14	3
97403	9786E60-3		14	4
97403	9786E61-1	2805-00-105-0168	2	26
97403	9786E63-1	2910-00-104-4489	8	11
97403	9786E63-2	2805-00-067-8126	8	3
97403	9786E64-1		8	7
97403	9786E64-2	2805-00-067-8260	8	14
97403	9786E64-3	2805-00-010-0190	9	13
97403	9786E64-3	2805-00-010-0190	10	19
97403	9786E64-6	5330-00-797-5907	8	4
97403	9786E64A2	5340-00-014-6979	9	8
97403	9786E64A2	5340-00-014-6979	10	22
97403	9786E65-1	5330-00-797-3513	11	15
97403	9786E65-3		8	13
97403	9786E65-4	5330-00-797-5905	8	15
97403	9786E65-5	5340-00-773-6219	9	1
97403	9786E65-5	5340-00-773-6219	10	1
97403	9786E66-1	5995-00-795-9586	2	16
97403	9786E66-1	5995-00-795-9586	11	8
97403	9786E69-3		11	10
97403	9786E70		11	12
97403	9786E75-1		9	12
97403	9786E75-2		9	17
97403	9786E75-2		10	16
97403	9786E75-3	5360-00-797-3517	9	4
97403	9786E75-4	2990-00-788-0433	9	14
97403	9786E76A	2990-00-126-8016	9	5
97403	9786E76A	2990-00-126-8016	10	5
97403	9786E76A2	2990-00-797-5886	9	20
97403	9786E81	2990-00-797-5887	9	18
97403	9786E83	2805-00-455-4914	9	21
97403	9786E83-2		9	23
97403	9786E83-2		10	11
97403	9786E83-3		9	25
97403	9786E84		9	24
97403	9786E89	2805-00-865-6322	7	4
97403	9786E90-1	5330-00-797-3514	7	5
97403	9786E92-3	5330-00-797-3510	19	17
97403	9786E93-1		23	5
97403	9786E93-2	2805-00-797-4638	19	18

TM9-2805-256-24P

TO 38G2-102-4

SL-4-81283C

SECTION IV

CAGEC	PART NUMBER	STOCK NUMBER	FIG.	ITEM
97403	9786E93-3	2805-00-797-4636	23	7
97403	9786E93-4	4730-00-797-4634	19	16
97403	9786E95	2805-00-867-8726	23	6
97403	9786E98-1	5340-00-797-5964	19	4
97403	9786E98-2	5360-00-445-2921	19	11
97403	9786E98-3	3040-00-795-9581	19	5
97403	9787E40-2	5325-01-203-4923	2	11
97403	9787E40-2	5325-01-203-4923	21	20

**TM 9-2805-256-24P  
TO 38G2-102-4  
SL-4-81283C**

SECTION IV

**CROSS-REFERENCE INDEXES  
FIGURE AND ITEM NUMBER INDEX**

FIG.	ITEM	STOCK NUMBER	CAGEC	PART NUMBER
1	1	2910-00-905-9792	96906	MS51086-1
1	2	5330-00-087-3612	96906	MS51091-4
1	3	4730-00-196-1479	44940	505-0104
2	1	5305-00-363-3976	97403	13218E0504-67
2	2	5305-00-455-8666	97403	13218E0505-56
2	3	2805-00-067-8112	97403	9786E56
2	4	2805-00-067-8084	97403	9786E55
2	5	5305-00-363-3988	97403	13218E0504-53
2	6	2805-00-014-1697	97403	9786E53
2	7	5320-00-850-2273	96906	MS16535-152
2	8	9905-00-110-3473	97403	9786E53-1
2	9		97403	13215E4156
2	10		97403	13215E4157
2	11	5325-01-203-4923	97403	9787E40-2
2	11	5325-00-816-1183	97403	13226E1594
2	12	5310-00-363-3993	97403	13218E0320-249
2	13	5310-00-543-5933	96906	MS35333-73
2	14	5305-00-291-8680	97403	13218E050456
2	15	2920-00-445-2925	97403	9786E47A
2	16	5995-00-795-9586	97403	9786E66-1
2	17	5940-00-813-0698	96906	MS25036-101
2	18	6145-00-570-0516	81349	M3486-1-2
2	19	5940-00-557-1629	96906	MS25036-149
2	20	5930-00-655-1514	96906	MS35058-22
2	21	5310-00-971-7989	97403	13218E0320-51
2	22	5310-00-209-0786	96906	MS35335-33
2	23	5305-00-410-1910	97403	13218E0526-286
2	24	5305-00-366-7766	97403	13218E0549-34
2	25	2805-00-455-9190	97403	9786E57
2	26	2805-00-105-0168	97403	9786E61-1
2	27	9905-01-146-5263	97403	13226E2228
3	1	2920-01-360-9571	97403	13227E9891-3
3	1	2920-00-867-8794	97403	13227E9891-4
3	2	2920-00-810-7082	96906	MS51009-1
4	1	4730-00-071-7890	97403	13218E025043
4	2		97403	13214E9389-5
4	2		97403	13214E9389-4
4	3	5305-00-363-3976	97403	13218E0504-67
4	4	2910-00-867-8730	97403	13214E7052
4	5	5330-00-819-8733	97403	9786E26-2
4	6		97403	13214E9389-1
4	7	5305-00-363-3976	97403	13218E050457
4	8	5305-00-017-9085	97403	13218E050468
4	9	2940-00-435-7242	97403	13215E3827
4	10	2940-00-225-4842	97403	13211E8449
4	11	6685-00-179-8632	97403	13206E0820
4		2805-00-953-1563	97403	13214E8187
5	1	5305-00-368-8223	97403	13218E0526-109
5	2	5330-00-114-2036	97403	13215E3857-10
5	3	2805-00-867-8736	97403	9786E44



SECTION IV

FIG.	ITEM	STOCK NUMBER	CAGEC	PART NUMBER
5	4	4730-00-278-3462	96906	MS27769D2
5	5	4820-00-799-5589	97403	9786E46
5	6	2805-00-927-3912	97403	9786E45
5	7	5330-00-797-4642	97403	9786E44-2
6	1	6680-00-445-2882	97403	9786E114
6	2	5330-00-840-6269	96906	MS29561-019
6	3		97403	9786E114-2
6	4	2590-01-245-0285	97403	9786E17A-1
7	1	4730-00-788-0441	97403	13214E9570
7	2	5330-00-977-7933	97403	13215E3857-14
7	3	5305-00-291-8680	97403	13218E0504-56
7	4	2805-00-865-6322	97403	9786E89
7	5	5330-00-797-3514	97403	9786E90-1
8	1	5305-00-227-1543	97403	13218E0526-24
8	2		97403	13215E3857-6
8	3	2805-00-067-8126	97403	9786E63-2
8	4	5330-00-797-5907	97403	9786E64-6
8	5		97403	13215E3835
8	6		97403	13215E3836
8	7		97403	9786E64-1
8	8	5305-00-363-3991	97403	13215E3832
8	9		97403	13218E0519-3
8	10	5305-00-974-3781	97403	13218E0504-13
8	11	2910-00-104-4489	97403	9786E63-1
8	12	3040-00-486-8125	97403	13214E7067
8	13		97403	9786E65-3
8	14	2805-00-067-8260	97403	9786E64-2
8	15	5330-00-797-5905	97403	9786E65-4
8		2805-00-929-3472	97403	13214E8189
9	1	5340-00-773-6219	97403	9786E65-5
9	2		97403	13214E7056
9	3	5310-00-807-1469	96906	MS21042-5
9	4	5360-00-797-3517	97403	9786E75-3
9	5	2990-00-126-8016	97403	9786E76A
9	6	5315-00-616-4261	96906	MS16562-28
9	7	5330-00-580-5939	96906	MS29561-009
9	8	5340-00-014-6979	97403	9786E64A2
9	9		97403	13218E0519-32
9	10	5310-00-934-9739	96906	MS35469-242
9	11	5365-00-720-8064	96906	MS16624-1025
9	12		97403	9786E75-1
9	13	2805-00-010-0190	97403	9786E64-3
9	14	2990-00-788-0433	97403	9786E75-4
9	15	5315-00-234-7465	96906	MS171525
9	16	5365-00-282-1633	96906	MS16633-1018
9	17		97403	9786E75-2
9	18	2990-00-797-5887	97403	9786E81
9	19	5315-00-527-0604	96906	MS16562-40
9	20	2990-00-797-5886	97403	9786E76A2
9	21	2805-00-455-4914	97403	9786E83
9	22	5340-00-332-1304	97403	13214E9385
9	23		97403	9786E83-2
9	24		97403	9786E84
9	25		97403	9786E83-3
9	26		97403	13226E1650
9	27		97403	13226E1648

SECTION IV

FIG.	ITEM	STOCK NUMBER	CAGEC	PART NUMBER
9	28	5315-00-821-1225	96906	MS16555-329
9	29		96906	MS16625-3062
9	30		97403	13226E1647
9	31		96906	MS16624-3025
9	32	3110-01-206-6608	97403	13206E1442
9		2990-00-832-5674	97403	13214E8217
10	1	5340-00-773-6219	97403	9786E65-5
10	2	2805-01-246-9255	97403	13227E9685
10	3	5310-00-807-1469	96906	MS21042-5
10	4	5360-01-240-2053	97403	13226E8007
10	5	2990-00-126-8016	97403	9786E76A
10	6	5815-00-616-4261	96906	MS16562-28
10	7	5330-00-580-5939	96906	MS29561-009
10	8	5315-00-234-7465	96906	MS171525
10	9	2990-01-238-3807	97403	13226E8008
10	10	5340-00-332-1304	97403	13214E9385
10	11		97403	9786E83-2
10	12		97403	13226E8009
10	13		97403	13226E8014
10	14	2990-01-237-0619	97403	13226E8011
10	15	5365-00-282-1633	96906	MS16633-1018
10	16		97403	9786E75-2
10	17	2990-01-239-8987	97403	13226E8006
10	18	2990-01-237-0620	97403	13226E8015
10	19	2805-00-010-0190	97403	9786E64-3
10	20	5310-00-934-9739	96906	MS35469-242
10	21		97403	13218E0519-32
10	22	5340-00-014-6979	97403	9786E64A2
10	23		97403	13226E1650
10	24		96906	MS16625-3062
10	25		97403	13226E1647
10	26		96906	MS16624-3025
10	27	3110-01-206-6608	97403	13206E1442
10	28	5315-00-821-1225	96906	MS16555-329
10	29		97403	13226E1648
11	1	2920-00-103-8812	97403	13206E1400
11	1		97403	13226E6178
11	2	5330-00-103-8793	97403	13206E0434
11	3	5310-00-363-3993	97403	13218E0320-249
11	4	5310-00-543-5933	96906	MS35333-73
11	5	5995-00-797-4619	97403	13215E3815
11	6	5305-00-291-8680	97403	13218E0504-56
11	7		80205	NAS1598-3Y
11	8	5995-00-795-9586	97403	9786E66-1
11	9	5305-00-363-3984	97403	13218E0504-32
11	10		97403	9786E69-3
11	11		97403	13212E3762-2
11	12		97403	9786E70
11	13	2920-00-788-0431	97403	13214E7057
11	14	5305-01-207-8288	97403	13218E0504-59
11	15	5330-00-797-3513	97403	9786E65-1
11		2920-00-225-4841	97403	13214E8180
12	1	2920-01-182-4316	97403	13226E1655
12	2		97403	13226E1651
12	3	5305-00-956-4470	96906	MS3212-25
12	4	2920-01-240-6785	97403	13226E1654
12	5	5305-00-984-4984	96906	MS35206-227

SECTION IV

FIG.	ITEM	STOCK NUMBER	CAGEC	PART NUMBER
12	6	5310-00-579-0079	96906	MS35333-37
12	7		81349	MIL-C-5501/7
12	8	5310-01-137-5497	97403	13226E1613
12	9	5330-00-551-8441	96906	MS28775-019
12	10	6120-01-137-5498	97403	13226E1632-2
12	11	2920-01-137-6822	97403	13226E1633
12	12	6150-01-238-4218	97403	13226E1653
12	13	5330-00-584-1840	96906	MS28775-014
12	14	5305-00-427-0034	97403	13218E0504-70
12	15	5310-01-239-8859	97403	13206E0444-5
12	16	5305-00-363-3976	97403	13218E0504-67
13	1	6150-01-182-1978	97403	13226E1658
13	2	5340-00-809-1490	96906	MS21333-98
14	1	4710-00-832-5675	97403	13214E7058
14	2	4730-00-013-7398	24617	137398
14	3	5310-01-333-2847	97403	9786E60-2
14	4		97403	9786E60-3
14	5	4730-00-503-0460	97403	13218E0135-3
15	1	5305-00-366-7763	97403	13206E1413
15	2	2910-00-064-5638	97403	13206E1430
15	3	5355-00-106-1804	97403	13206E1405
15	4	5360-00-867-8788	97403	13206E1409
15	5		97403	13206E1489
15	6	5310-00-045-5214	96906	MS15795-914
15	7	5310-00-971-7989	97403	13218E0320-51
15	8	5310-00-209-0786	96906	MS35335-33
15	9	5330-00-819-8733	97403	9786E26-2
15	10		97403	9786E27
15	11	4730-00-013-7398	24617	137398
15	12	5307-00-637-6755	88044	AN125964
15	13		97403	9786E43-1
15	13		97403	13215E3837
15		2910-00-917-4735	97403	13214E8192
16	1	2805-00-867-8729	97403	13214E7061
16	2	4730-00-013-7398	24617	137398
16	3	5305-00-017-9085	97403	13218E0504-68
16	4	2910-01-173-2124	97403	13226E2230-2
16	5	5330-00-756-1673	97403	13206E0401
17	1	5305-01-184-6181	97403	13218E0549-46
17	2	2805-00-476-6496	97403	9786E119-1
17	3	5310-00-788-0443	97403	13218E0320-75
17	4	5310-00-584-5272	97403	13218E0519-42
17	5	2805-00-767-6009	97403	9786E120
17	6	5315-00-616-5514	96906	MS35756-6
17	7	2990-00-972-7950	97403	9786E121
18	1	5305-00-017-9085	97403	13218E0504-68
18	2	2805-00-865-6325	97403	9786E26-1
18	3	5330-00-799-5586	97403	9786E26-4
18	4	5310-00-017-8919	97403	9786E50-1
18	5	2990-00-757-9766	97403	9786E52
18	6	5330-00-797-3506	97403	9786E50-2
19	1	5310-00-857-5559	96906	MS21045L5
19	2	5310-00-149-9130	96906	MS20002-6

SECTION IV

FIG.	ITEM	STOCK NUMBER	CAGEC	PART NUMBER
19	3		97403	13215E4181
19	4	5340-00-797-5964	97403	9786E98-1
19	5	3040-00-795-9581	97403	9786E98-3
19	6	2805-01-203-4361	97403	9786E101-3
19	7	5310-00-363-3992	97403	13218E0320-32
19	8	5305-00-455-4893	97403	9786E101-2
19	9		97403	9786E100-2
19	10	2805-00-522-7386	97403	9786E102
19	11	5360-00-445-2921	97403	9786E98-2
19	12		97403	9786E100-1
19	13		97403	13214E9382
19	14	4730-00-503-0460	97403	13218E0135-3
19	15		97403	13215E4180
19	16	4730-00-797-4634	97403	9786E93-4
19	17	5330-00-797-3510	97403	9786E92-3
19	18	2805-00-797-4638	97403	9786E93-2
19	19	2805-00-788-0425	97403	13206E0110
19	20	5330-00-819-8734	97403	9786E107-1
19		2805-00-575-3505	97403	13214E8181
19		2805-00-420-7246	97403	13214E8188
19		2805-00-252-2012	97403	13214E8199
20	1		97403	13214E7064
20	2	5306-00-797-5884	97403	9786E113-3
20	3	2805-00-788-1527	97403	9786E113-1
20	4	5340-00-439-8116	97403	9786E113-2
20	5	2805-00-788-0423	97403	9786E112
20	6	2805-01-093-2392	97403	13222E6723
20	7		96906	MS16624-3040
20	8		97403	9786E111-2
20	9	2805-00-976-9154	97403	13206E0102
20	10		97403	13226E8002
20	11		97403	13226E8003
20	12		97403	13226E8004
20	13	5340-00-439-8116	97403	9786E113-2
20	14		97403	13226E8001
20	15	2805-01-093-2392	97403	13222E6723
20	16		96906	MS16624-3040
20	17		97403	9786E111-2
20	18		97403	13206E0102
20		2805-00-937-0949	97403	13214E8191
21	1	2805-00-797-5894	97403	9786E115
21	1	2920-01-133-6312	97403	13226E0939
21	2	5310-00-857-5559	96906	MS21045L5
21	3		97403	9786E123
21	4		97403	13214E7049-1
21	5	5330-01-237-3715	97403	13214E7063
21	6		97403	13218E0504-53
21	7	5340-00-797-4641	97403	9786E129-3
21	8	2920-00-797-5897	97403	9786E128
21	8	2920-01-131-8253	97403	13226E0929
21	9	5970-00-445-2972	97403	9786E129-1
21	9	2990-01-180-7614	97403	13226E6179
21	10	2920-00-788-0432	97403	13212E3763
21	11		97403	13218E0504-53
21	12	2805-00-457-8284	97403	9786E107-3
21	13		97403	13218E0504-53
21	14	5305-00-053-1117	96906	MS24621-16
21	15		97403	9786E129-2

**TM 9-2805-256-24P  
TO 38G2-102-4  
SL-4-81283C**

**SECTION IV**

FIG.	ITEM	STOCK NUMBER	CAGEC	PART NUMBER
21	16		97403	13214E9381-4
21	17		97403	13214E931-2
21	18	5325-01-203-4923	97403	13214E931-1
21	19		97403	13214E93814
21	20		97403	9787E40-2
21		2920-01-178-4978	97403	13226E6175
22	1	2805-00-575-3493	97403	9786E116
22	2		97403	9786E118
22	3	3110-00-100-3698	97403	13214E7049-2
22	4	5315-00-616-5514	96906	MS357566
23	1	5340-00-050-1511	96906	MS9380-06
23	2	5305-00-797-3535	97403	13215E3831
23	3	5330-00-797-4639	97403	13206E1459
23	4	5365-00-584-6620	96006	MS16632-1037
23	5		97403	9786E93-1
23	6	2805-00-867-8726	97403	9786E95
23	7	2805-00-797-4636	97403	976E3-3
23		2805-00-575-3503	97403	13214E8177
24	1	5330-00-608-6432	96906	MS28775-237
24	2	2805-01-142-0987	97403	9786E10
24	3	2805-00-797-3536	97403	9786E16-3
24	4		96906	MS35914-112
24	5	5340-00-994-1632	96906	MA35914-109
24	6	3110-00-183-6715	96906	MS171314
24	7	5331-01-237-3715	97403	13214E7063
24	8		97403	13214E70491
24		2805-00-832-8021	97403	13214E8215
24		2805-00-832-5672	97403	13214E8186
24		2805-00-432-5677	97403	13214E8205

By Order of the Secretaries of the Army, Air Force, and Navy (Including the Marine Corps):

GORDON R. SULLIVAN  
*General, United States Army*  
*Chief of Staff*

MILTON H. HAMILTON  
*Administrative Assistant to the*  
*Secretary of the Army*  
03490

MERRILL A. McPEAK  
*General, USAF*  
*Chief of Staff*

Official:

RONALD W. YATES  
*General, USAF*  
*Commander, Air Force Materiel Command*

DAVID E. BOTTORFF  
*Rear Admiral, CEC, US Navy*  
*Commander*  
*Navy Facilities Engineering*  
*Command*

H. E. REESE  
*Deputy for Support*  
*Marine Corps Research, Development and*  
*Acquisition Command*

**DISTRIBUTION:**

To be distributed in accordance with DA Form 12-25-E, block no. 6015, requirements for TM 9-2805-256-24P.

RECOMMENDED CHANGES TO EQUIPMENT TECHNICAL PUBLICATIONS

SOMETHING WRONG WITH THIS PUBLICATION?



THEN... JOT DOWN THE DOPE ABOUT IT ON THIS FORM. CAREFULLY TEAR IT OUT, FOLD IT AND DROP IT IN THE MAIL!

FROM (PRINT YOUR UNIT'S COMPLETE ADDRESS)

CDR, 1st Br, 65th ADA  
ATTN: SP4 J. Brown  
Key West, FL 33040

DATE SENT

10 Jun 79

PUBLICATION NUMBER

TM 9-1430-550-34-1

PUBLICATION DATE

7 Sep 72 .

PUBLICATION TITLE

Unit of Radar Set

AN/MPQ-50 Tested at the HFC

BE EXACT PIN-POINT WHERE IT IS

PAGE NO	PARA. GRAPH	FIGURE NO	TABLE NO
9-19		9-5	
21-2	step 1C	21-2	

IN THIS SPACE TELL WHAT IS WRONG AND WHAT SHOULD BE DONE ABOUT IT:

"B" Ready Relay K11 is shown with two #9 contacts. That contact which is wired to pin 8 of relay K16 should be changed to contact #10.

Reads: Multimeter B indicates 600 K ohms to 9000 K ohms.

Change to read: Multimeter B indicates 600 K ohms minimum.

Reason: Circuit being checked could measure infinity. Multimeter can read above 9000 K ohms and still be correct.

SAMPLE

PRINTED NAME GRADE OR TITLE AND TELEPHONE NUMBER

SP4 J.T. Brown, Jr.

SIGN HERE

SP4 James Brown, Jr.

DA FORM 2028-2  
2 JUL 79

REPLACES DA FORM 2028-2 1 APR 78 WHICH WILL BE USED UNTIL EXHAUSTED  
AMM/M Overprint 3, 1 Mar 91

P.S.--IF YOUR OUTFIT WANTS TO KNOW ABOUT YOUR RECOMMENDATION MAKE A CARBON COPY OF THIS AND GIVE IT TO YOUR HEADQUARTERS

TEAR ALONG PRIORITY LINE

FILL IN YOUR  
UNITS ADDRESS



FOLD BACK

DEPARTMENT OF THE ARMY

---

---

OFFICAL BUSINESS

COMMANDER  
U.S. ARMY AVIATION AND TROOP COMMAND  
ATTN: AMSAT-I-MTS  
4300 GOODFELLOW BOULEVARD  
ST. LOUIS, MO 63120-1798

TEAR ALONG PERFORATED LINE



RECOMMENDED CHANGES TO EQUIPMENT TECHNICAL PUBLICATIONS



THEN... JOT DOWN THE DOPE ABOUT IT ON THIS FORM. CAREFULLY TEAR IT OUT. FOLD IT AND DROP IT IN THE MAIL!

**SOMETHING WRONG WITH THIS PUBLICATION?**

FROM: (PRINT YOUR UNIT'S COMPLETE ADDRESS)

DATE SENT

PUBLICATION NUMBER

TM 9-2805-256-24P

PUBLICATION DATE

PUBLICATION TITLE

Eng Gasoline, 1 1/2 HP MSM

BE EXACT . . . PIN-POINT WHERE IT IS

PAGE NO

PARA-GRAPH

FIGURE NO

TABLE NO

IN THIS SPACE TELL WHAT IS WRONG AND WHAT SHOULD BE DONE ABOUT IT:

TEAR ALONG PERFORATED LINE

PRINTED NAME, GRADE OR TITLE, AND TELEPHONE NUMBER

SIGN HERE

DA FORM 2028-2  
1 JUL 79

PREVIOUS EDITIONS ARE OBSOLETE.  
DRSTS-M Overprint 2, 1 Nov 80.

P.S.--IF YOUR OUTFIT WANTS TO KNOW ABOUT YOUR RECOMMENDATION MAKE A CARBON COPY OF THIS AND GIVE IT TO YOUR HEADQUARTERS.

FILL IN YOUR  
UNITS ADDRESS



FOLD BACK

DEPARTMENT OF THE ARMY

---

---

OFFICAL BUSINESS

COMMANDER  
U.S. ARMY AVIATION ~~AL~~ TROOP COMMAND  
ATTN: AMSAT-I-MTS  
4300 GOODFELLOW BOULEVARD  
ST. LOUIS, MO 63120-1798

TEAR ALONG PERFORATED LINE

RECOMMENDED CHANGES TO EQUIPMENT TECHNICAL PUBLICATIONS



THEN... JOT DOWN THE DOPE ABOUT IT ON THIS FORM. CAREFULLY TEAR IT OUT. FOLD IT AND DROP IT IN THE MAIL!

**SOMETHING WRONG WITH THIS PUBLICATION?**

FROM: (PRINT YOUR UNIT'S COMPLETE ADDRESS)

DATE SENT

PUBLICATION NUMBER  
TM 9-2805-256-24P

PUBLICATION DATE

PUBLICATION TITLE  
Eng Gasoline, 1 1/2 HP MSM

BE EXACT PIN-POINT WHERE IT IS

PAGE NO	PARA-GRAPH	FIGURE NO	TABLE NO

IN THIS SPACE TELL WHAT IS WRONG AND WHAT SHOULD BE DONE ABOUT IT:

TEAR ALONG PERFORATED LINE

PRINTED NAME, GRADE OR TITLE, AND TELEPHONE NUMBER

SIGN HERE

DA FORM 1 JUL 79 2028-2

PREVIOUS EDITIONS ARE OBSOLETE.  
DRSTS-M Overprint 2, 1 Nov 80.

P.S.--IF YOUR OUTFIT WANTS TO KNOW ABOUT YOUR RECOMMENDATION MAKE A CARBON COPY OF THIS AND GIVE IT TO YOUR HEADQUARTERS

FILL IN YOUR  
UNITS ADDRESS



FOLD BACK

DEPARTMENT OF THE ARMY



OFFICAL BUSINESS

COMMANDER  
U.S. ARMY AVIATION AND TROOP COMMAND  
ATTN: AMSAT-I-MTS  
4300 GOODFELLOW BOULEVARD  
ST. LOUIS, MO 63120-1798

TEAR ALONG PERFORATED LINE

RECOMMENDED CHANGES TO EQUIPMENT TECHNICAL PUBLICATIONS



THEN... JOT DOWN THE DOPE ABOUT IT ON THIS FORM. CAREFULLY TEAR IT OUT. FOLD IT AND DROP IT IN THE MAIL!

**SOMETHING WRONG WITH THIS PUBLICATION?**

FROM: (PRINT YOUR UNIT'S COMPLETE ADDRESS)

DATE SENT

PUBLICATION NUMBER

TM 9-2805-256-24P

PUBLICATION DATE

PUBLICATION TITLE

Eng Gasoline, 1 1/2 HP MSM

BE EXACT PIN-POINT WHERE IT IS

PAGE NO

PARA-GRAPH

FIGURE NO

TABLE NO

IN THIS SPACE TELL WHAT IS WRONG AND WHAT SHOULD BE DONE ABOUT IT:

PRINTED NAME, GRADE OR TITLE, AND TELEPHONE NUMBER

SIGN HERE

DA FORM 2028-2  
1 JUL 79

PREVIOUS EDITIONS ARE OBSOLETE.  
DRSTS-M Overprint 2, 1 Nov 80.

P.S.--IF YOUR OUTFIT WANTS TO KNOW ABOUT YOUR RECOMMENDATION MAKE A CARBON COPY OF THIS AND GIVE IT TO YOUR HEADQUARTERS.

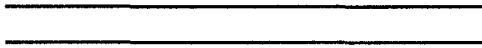
1 Nov 80

FILL IN YOUR  
UNITS ADDRESS



FOLD BACK

DEPARTMENT OF THE ARMY



OFFICAL BUSINESS

COMMANDER  
U.S. ARMY AVIATION AND TROOP COMMAND  
ATTN: AMSAT-I-MTS  
4300 GOODFELLOW BOULEVARD  
ST. LOUIS, MO 63120-1798

TEAR ALONG PERFORATED LINE

# The Metric System and Equivalents

## Linear Measure

centimeter = 10 millimeters = .39 inch  
 decimeter = 10 centimeters = 3.94 inches  
 1 meter = 10 decimeters = 39.37 inches  
 1 dekameter = 10 meters = 32.8 feet  
 1 hectometer = 10 dekameters = 328.08 feet  
 1 kilometer = 10 hectometers = 3,280.8 feet

## Weights

1 centigram = 10 milligrams = .15 grain  
 1 decigram = 10 centigrams = 1.54 grains  
 1 gram = 10 decigram = .035 ounce  
 1 dekagram = 10 grams = .35 ounce  
 1 hectogram = 10 dekagrams = 3.52 ounces  
 1 kilogram = 10 hectograms = 2.2 pounds  
 1 quintal = 100 kilograms = 220.46 pounds  
 1 metric ton = 10 quintals = 1.1 short tons

## Liquid Measure

1 deciliter = 10 centiliters = 3.38 fl. ounces  
 1 liter = 10 deciliters = 33.81 fl. ounces  
 1 dekaliter = 10 liters = 2.64 gallons  
 1 hectoliter = 10 dekaliters = 26.42 gallons  
 1 kiloliter = 10 hectoliters = 264.18 gallons

## Square Measure

1 sq. centimeter = 100 sq. millimeters = .155 sq. inch  
 1 sq. decimeter = 100 sq. centimeters = 15.5 sq. inches  
 1 sq. meter (centare) = 100 sq. decimeters = 10.76 sq. feet  
 1 sq. dekameter (are) = 100 sq. meters = 1,076.4 sq. feet  
 1 sq. hectometer (hectare) = 100 sq. dekameters = 2.47 acres  
 1 sq. kilometer = 100 sq. hectometers = .386 sq. mile

## Cubic Measure

1 cu. centimeter = 1000 cu. millimeters = .06 cu. inch  
 1 cu. decimeter = 1000 cu. centimeters = 61.02 cu. inches  
 1 cu. meter = 1000 cu. decimeters = 35.31 cu. feet

## Approximate Conversion Factors

To change	To	Multiply by	To change	To	Multiply by
inches	centimeters	2.540	ounce-inches	newton-meters	.007062
feet	meters	.305	centimeters	inches	.394
yards	meters	.914	meters	feet	3.280
miles	kilometers	1.609	meters	yards	1.094
square inches	square centimeters	6.451	kilometers	miles	.621
square feet	square meters	.093	square centimeters	square inches	.155
square yards	square meters	.836	square meters	square feet	10.764
square miles	square kilometers	2.590	square meters	square yards	1.196
acres	square hectometers	.405	square kilometers	square miles	.386
cubic feet	cubic meters	.028	square hectometers	acres	2.471
cubic yards	cubic meters	.765	cubic meters	cubic feet	35.315
fluid ounces	milliliters	29.573	cubic meters	cubic yards	1.308
pints	liters	.473	milliliters	fluid ounces	.034
quarts	liters	.946	liters	pints	2.113
gallons	liters	3.785	liters	quarts	1.057
ounces	grams	28.349	liters	gallons	.264
pounds	kilograms	.454	grams	ounces	.035
short tons	metric tons	.907	kilograms	pounds	2.205
pound-feet	newton-meters	1.356	metric tons	short tons	1.102
pound-inches	newton-meters	.11296			

## Temperature (Exact)

°F	Fahrenheit temperature	5/9 (after subtracting 32)	Celsius temperature	°C
----	------------------------	----------------------------	---------------------	----

